



Public Health and Commercial Sex Venues in Los Angeles County

Peter R. Kerndt, MD, MPH

Director, STD Program

Los Angeles County Department of Public Health

Presentation Overview

- Burden of HIV/STDs In Los Angeles County
- Syphilis, HIV and Men Who Have Sex With Men
- The CSV Environment
- The Evidence: CSV Attendance and HIV/STDs Risk
- The CSV Initiative
- The Public Health Process
- CSV Regulations
- Ongoing/Future Efforts

Los Angeles County

- 4,081 square miles
- Approximately 10 million residents
- 29% of California residents live in Los Angeles
- Home to 35% of living AIDS cases in California
- Population:
 - Latino (44.6%)
 - White (31.1%)
 - Asian/PI (12.6%)
 - African American (9.7%)
 - Native American (0.5%)



The Burden of HIV/STDs Los Angeles County, 2003

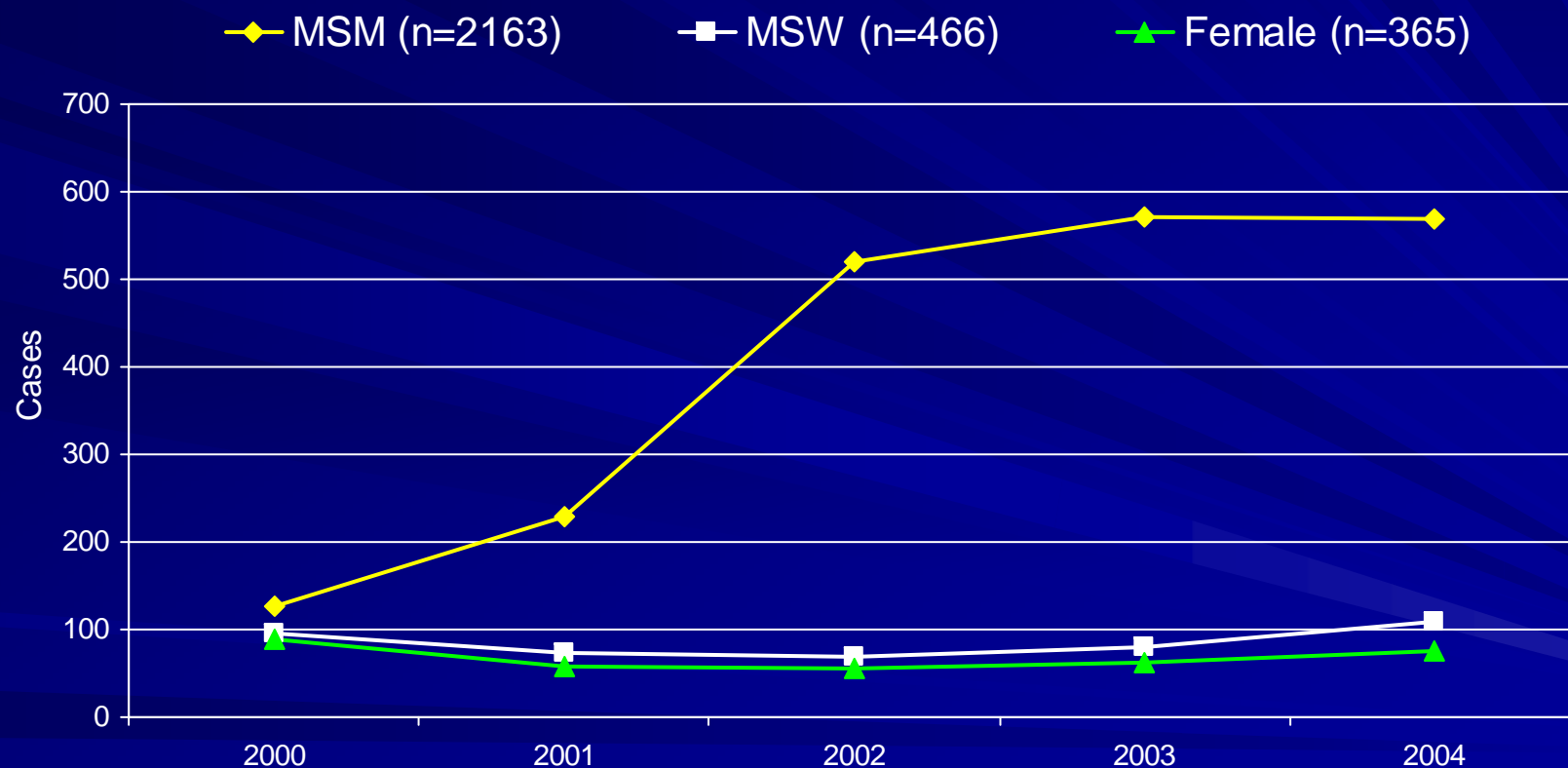
■ 2,558 AIDS Cases*	(43% CA; 6% US)
■ 36,555 Chlamydia	(31% CA; 4% US)
■ 8,008 Gonorrhea	(31% CA; 2% US)
■ 442 P&S Syphilis	(34% CA; 6% US)
■ 365 Early Latent	(54% CA; 4% US)
■ 28 Congenital Syphilis	(47% CA; 7% US)

Source: LA, CA, CDC STD Surveillance, 2003

* HIV/AIDS Semi-Annual Surveillance Summary (Cases reported as of December 31, 2003)

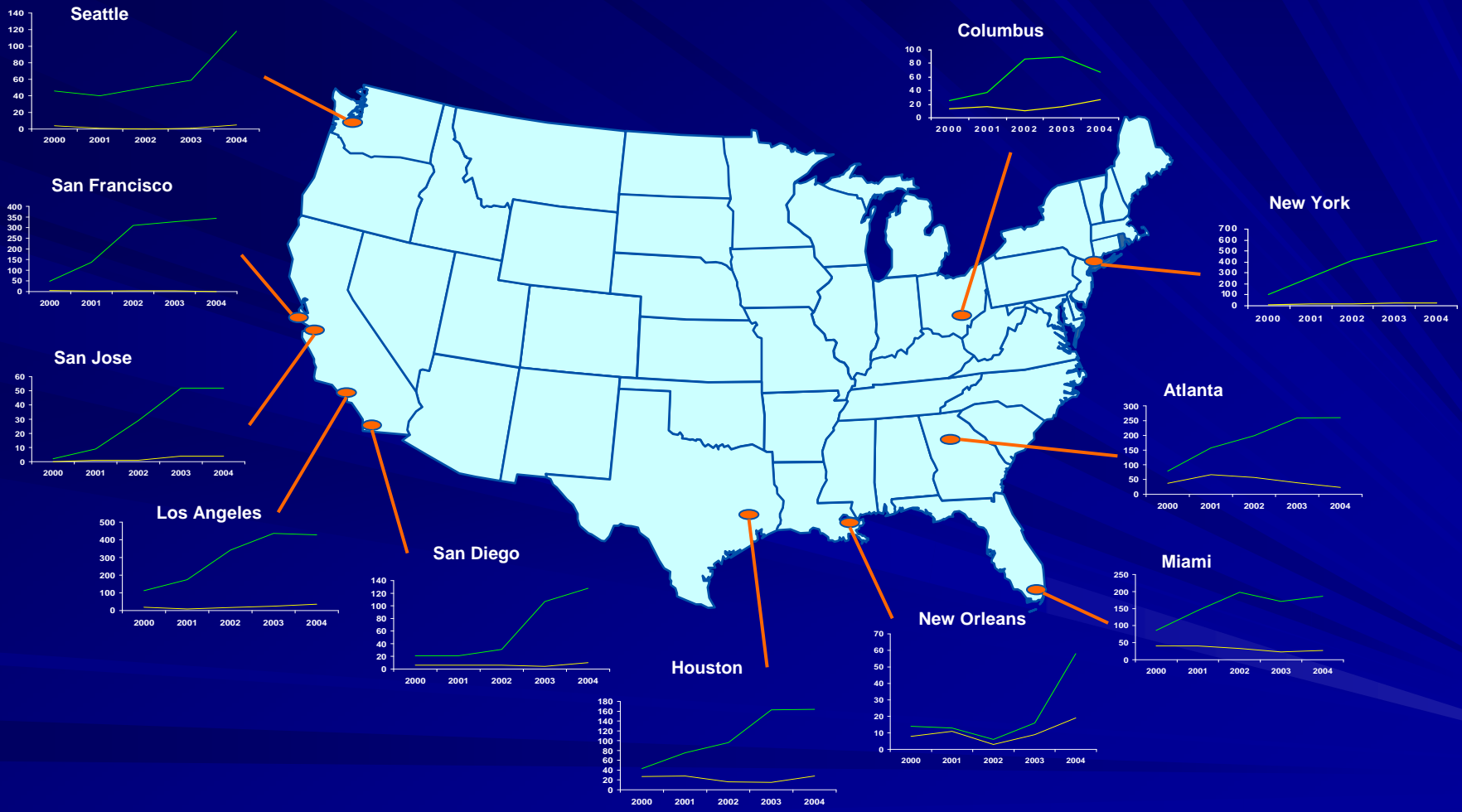
MSM Early Syphilis Epidemic Los Angeles County, 2000-2004

Early syphilis by sexual orientation



Source: LAC STD Program, Epidemiology Unit

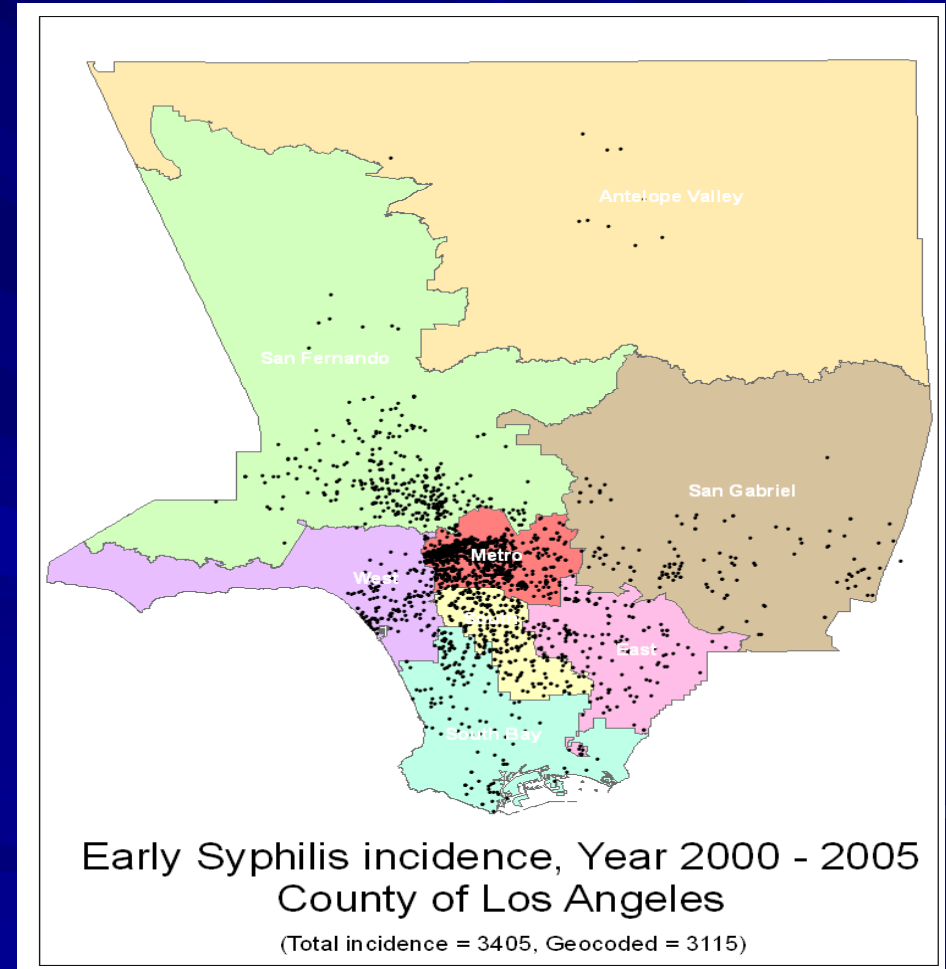
Primary and secondary syphilis cases, by sex, in 11 large U.S. cities with an increase of >50 cases during 2000-2004*



— Men — Women

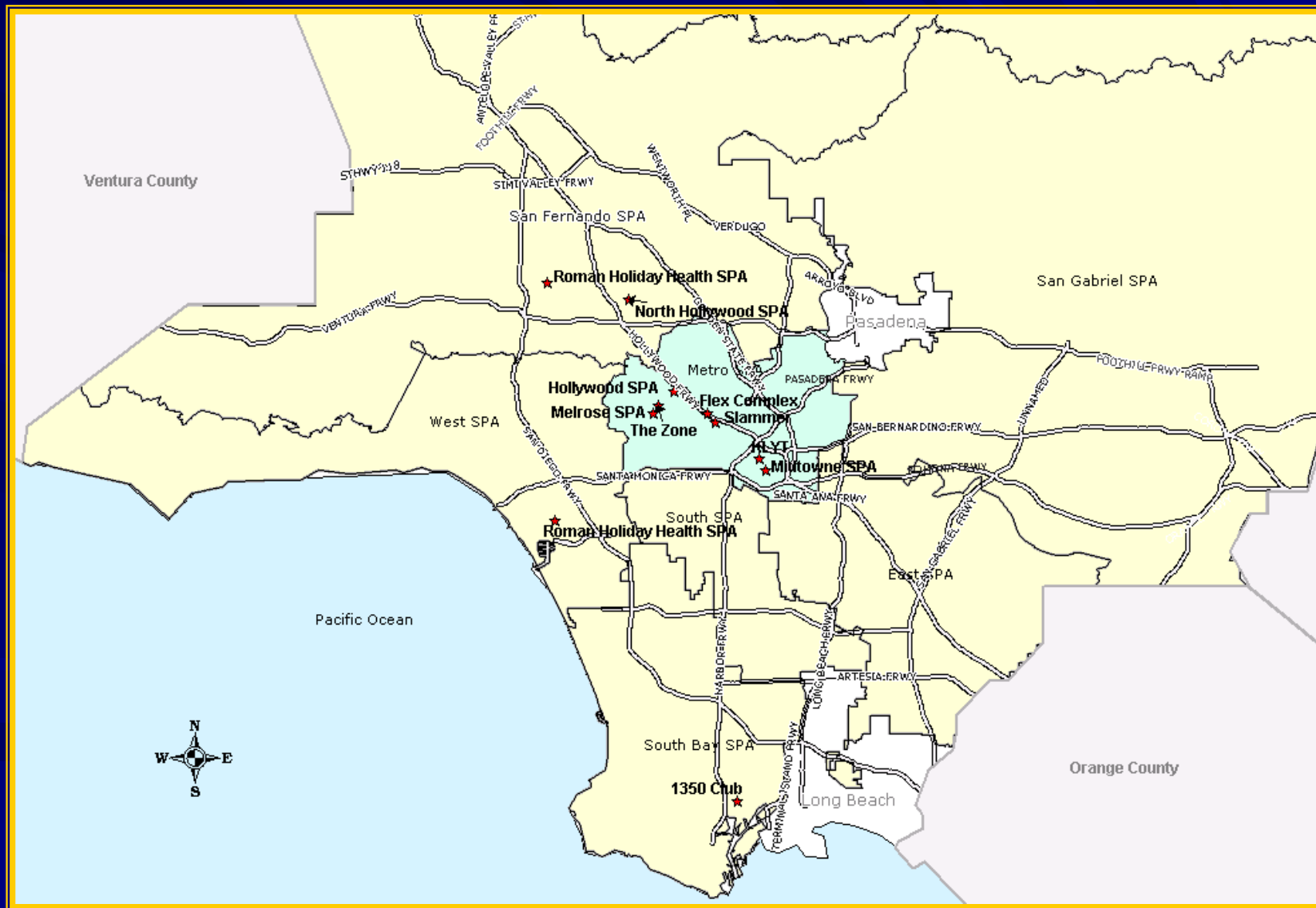
Syphilis Epidemic in LAC

- Between January 2000 and May of 2005, 3,405 early syphilis cases
- Concentrated in the West Hollywood-Hollywood area



Source: LAC STD Program

27% of MSM Diagnosed with Syphilis Had Sex or Met Sex Partner at Commercial Sex Venues.

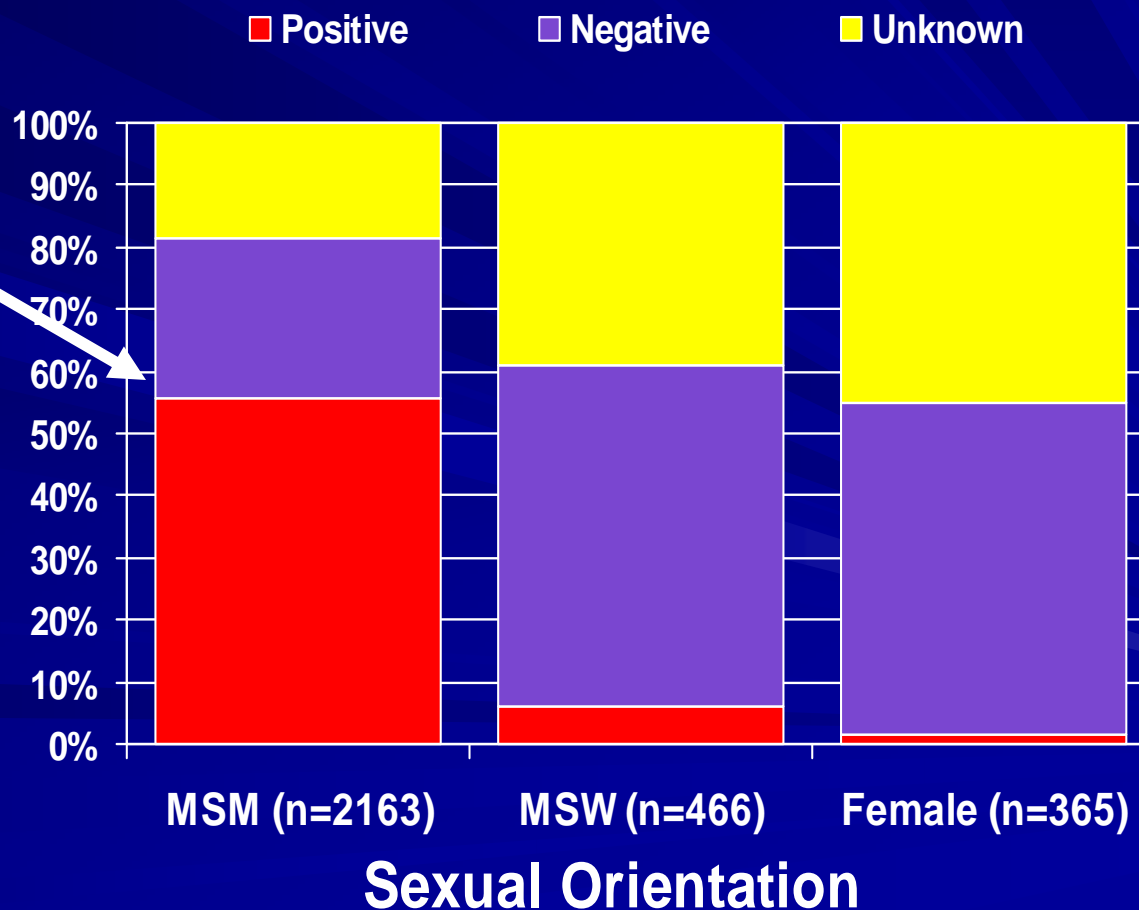


Early Syphilis by HIV Status

Los Angeles County, 2000-2005

HIV Status of Early Syphilis Cases

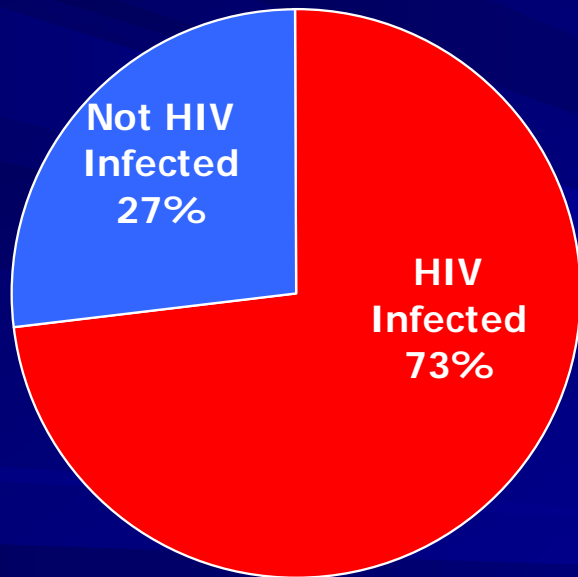
6 in 10 MSM
Early Syphilis Cases
Report Being
HIV Infected



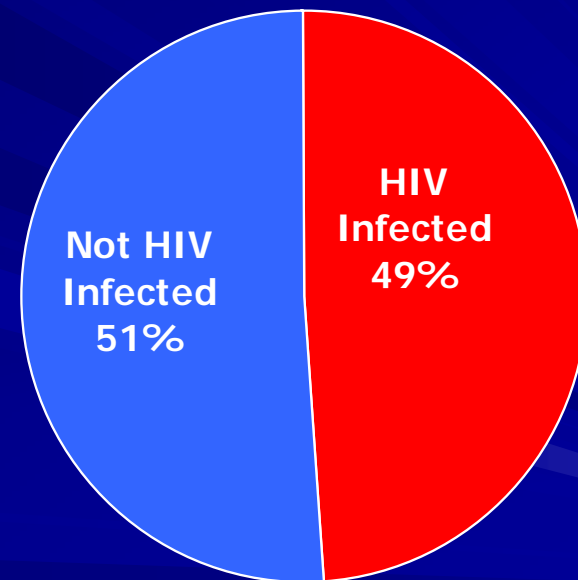
**The Evidence: Commercial
Sex Venue (CSV) Attendance
& HIV/STDs Risk**

Comparison of HIV Status Among Early Syphilis Cases Attending CSVs vs. Not Attending CSVs, Los Angeles County 2001-2005, N=1,732

Attend CSVs

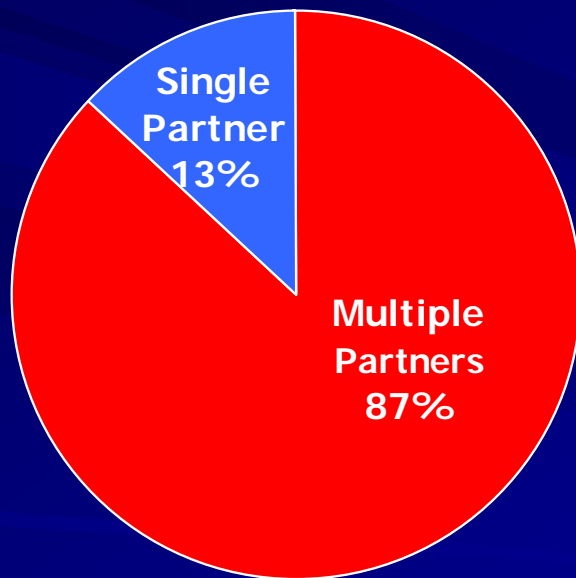


Don't Attend CSVs



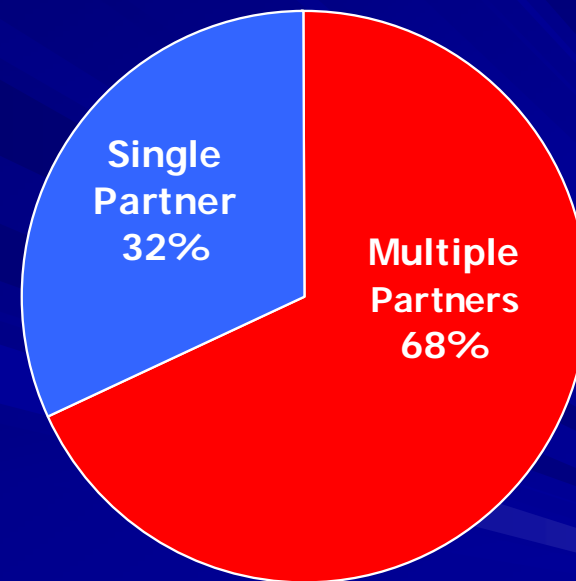
Number of Partners Among Early Syphilis Cases Attending CSVs vs. Not Attending CSVs, Los Angeles County 2001-2005, N=1,732

Attend CSVs



Mean Multiple Partners = 16.8, Median = 5

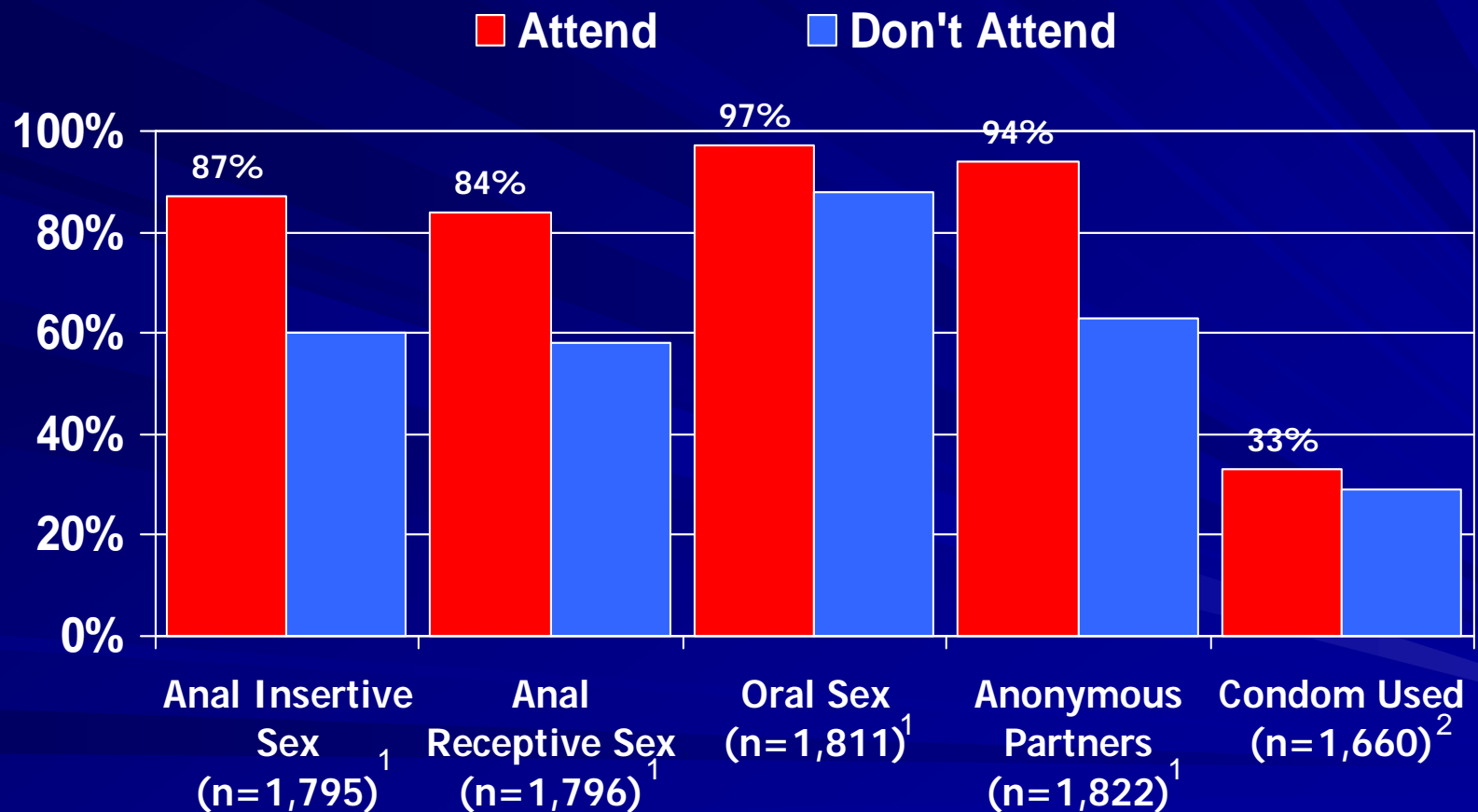
Don't Attend CSVs



Mean Multiple Partners = 8.6, Median = 2

* Chi-Square significant ($p < .0001$)

Comparison of Risk Behavior Among Early Syphilis Cases Attending CSVs, LA County, 2001-2005



¹ Chi-Square significant (p<.0001)

² Condom was used at last intercourse.

Multivariate Analysis of CSV Attendance and Risk Behaviors

MSMs who attended CSVs were:

- **Twice as likely to be HIV positive (OR=2.2, 95% CI 1.6–3.2)**
- **Almost twice as likely to have multiple partners (OR=1.9, 95% CI 1.1–3.1)**
- **Almost twice as likely to use drugs (OR=1.7, 95% CI 1.3–2.4)**
- **Five times as likely to have anonymous partners (OR=5.3, 95% CI 2.8–9.9)**

New HIV Infection Among Men with Early Syphilis

Los Angeles County, Jan 2002- April 2004 , N=212

Estimated Recent HIV Infection Among Early Syphilis Cases Per Year

	%	95% CI
Males	17	12 - 22%
MSM	26	19 - 33%

Source: Taylor, M.M. et al., JAIDS: 38(5), 2005

New and Recent HIV Infections in Bathhouse Sample (N=676)

Los Angeles Bathhouse Study, 2001-2002 (N=676)

- 11% newly diagnosed HIV infection
- 27.5% of those newly diagnosed HIV infected patrons, likely acquired their HIV infection in the prior 12 months

What is a CSV?

- Charges a fee for entry or membership
- Allows and/or facilitates high risk sexual activity on the premises

CSVs: Bathhouses & Sex Clubs (1)

■ Bathhouses

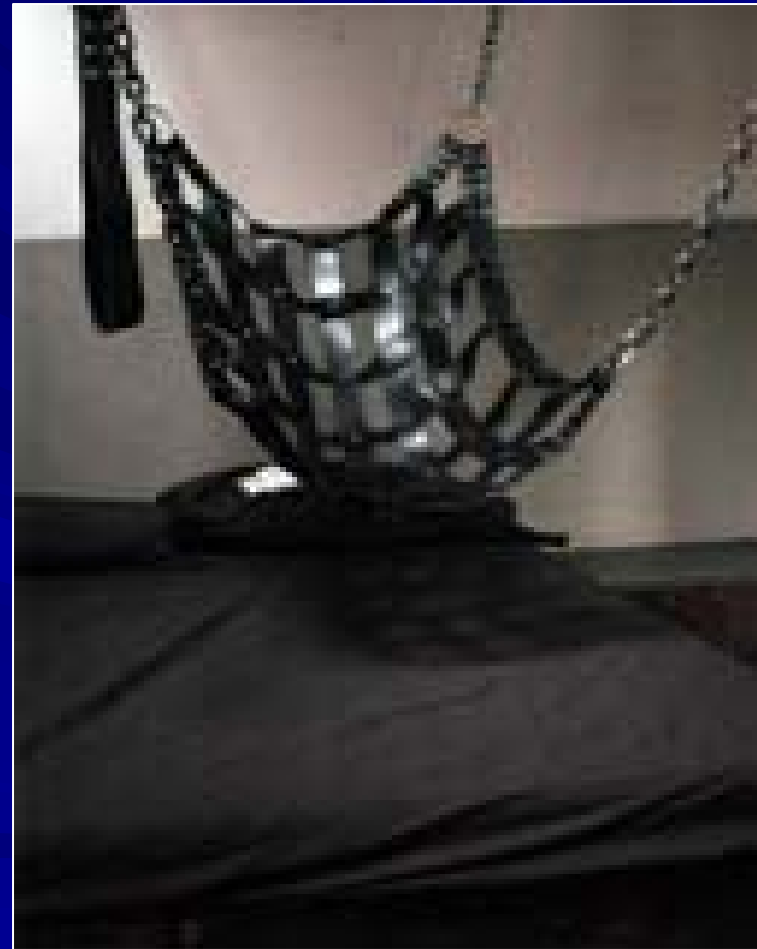
- Private rooms
- Jacuzzis
- Saunas
- Showers
- Gyms
- Pools
- Steam rooms



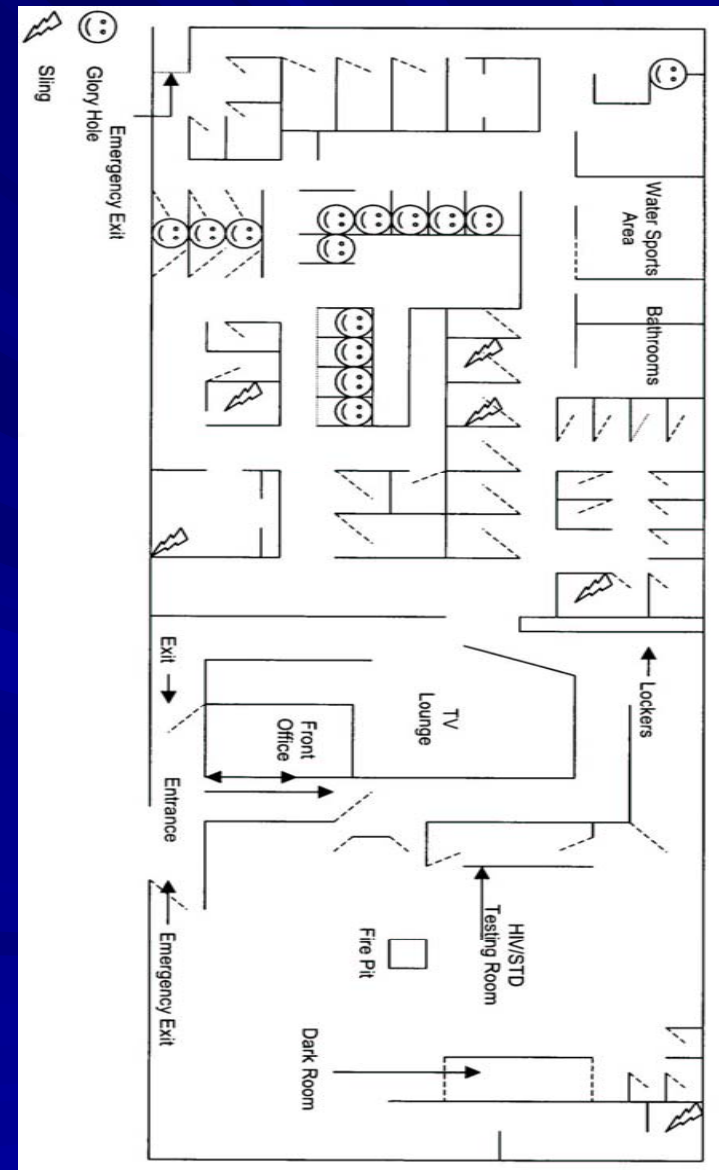
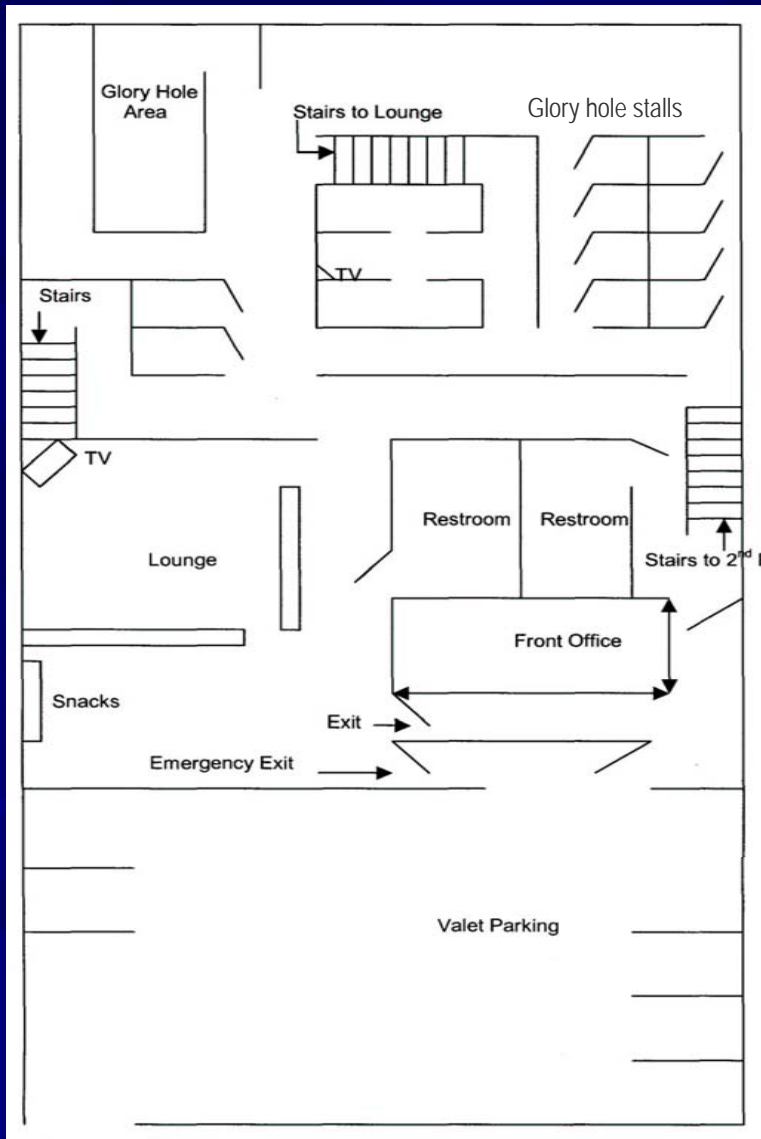
CSVs: Bathhouses & Sex Clubs (2)

■ Sex clubs

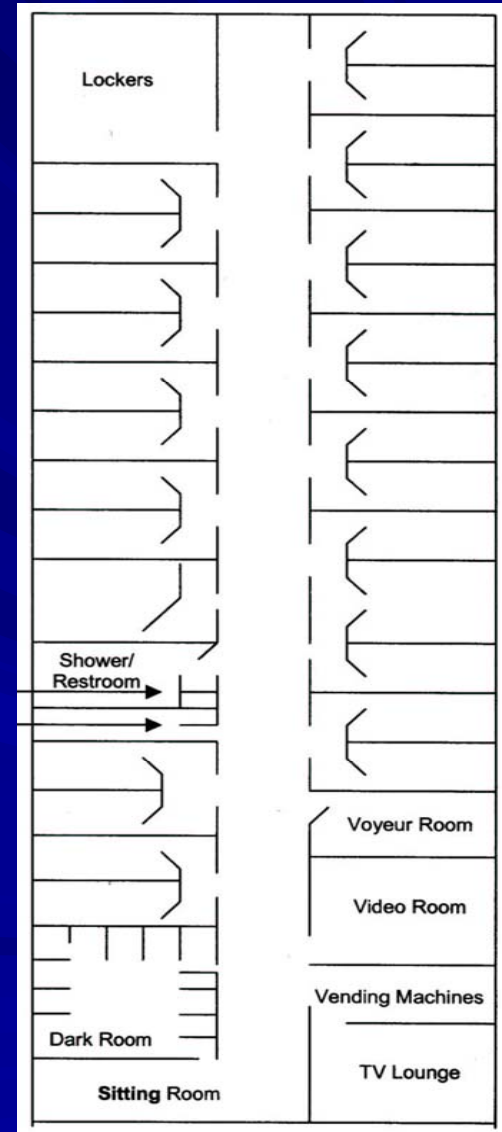
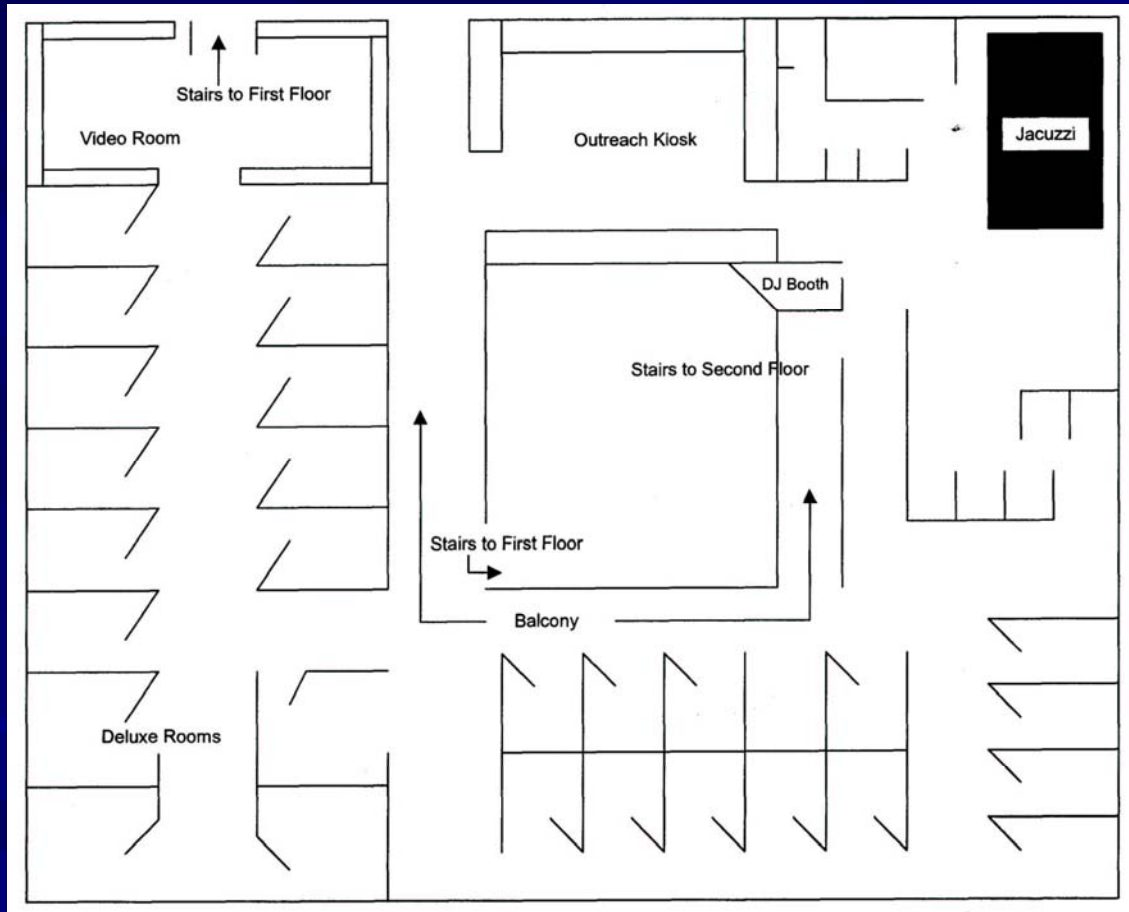
- Glory holes
- Mazes/Dark rooms
- Slings
- Booths/Stalls
- Water sports area
- Video lounge
- Group sex area



Example Sex Club Floor Plans



Example Bathhouse Floor Plans



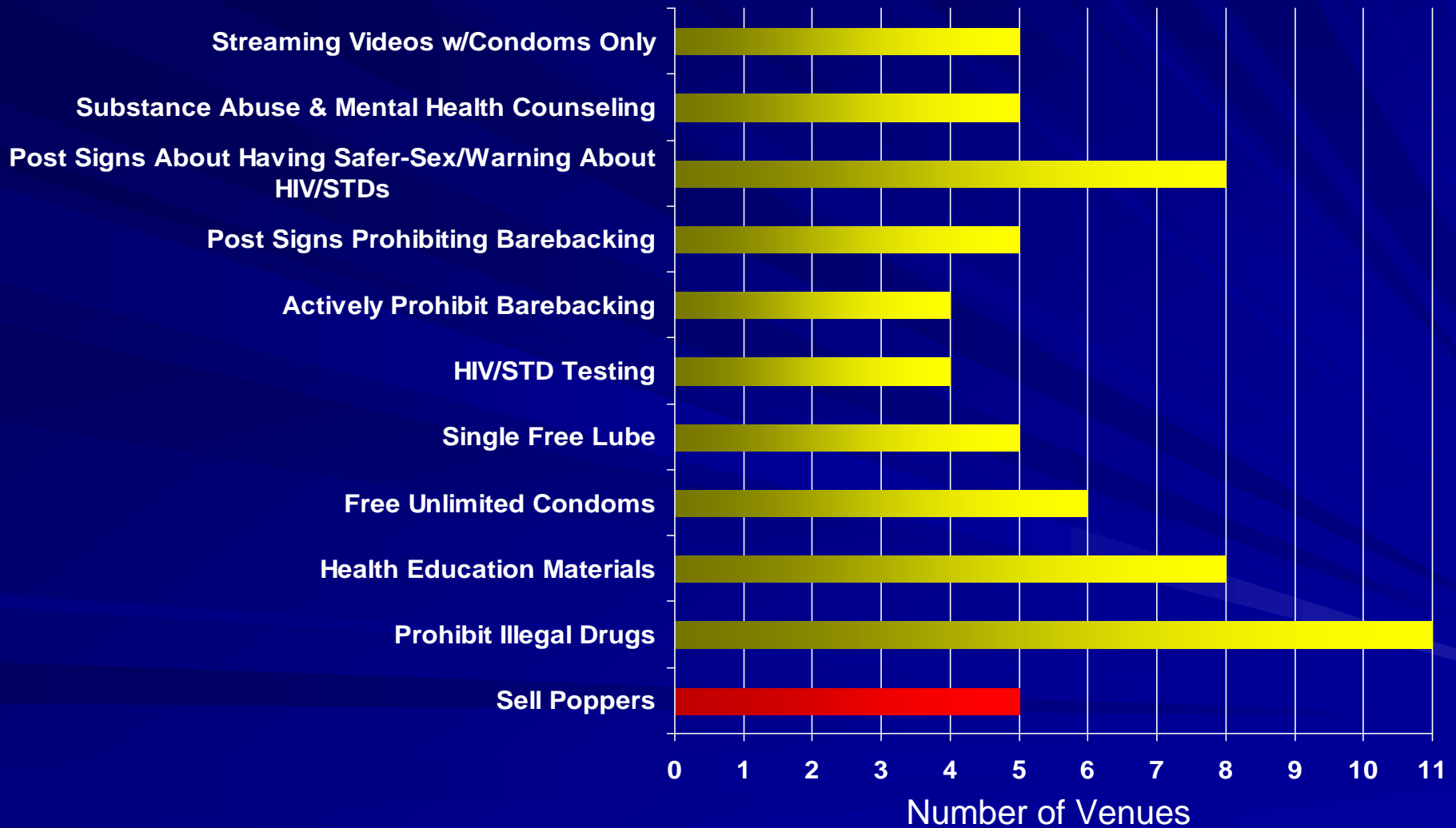
Inside CSVs in Los Angeles County

- An estimated 4,000 men per week attend eleven CSVs in Los Angeles
- Often no verbal communication
- An efficient setting for multiple and anonymous sexual encounters with partners of unknown HIV status



CSVs Business Practices and Patron Services

Survey of Owners/Managers (N=11, March, 2003)



The CSV Initiative

Goals of the CSV Initiative

- LAC DHS Funded a Commercial Sex Venue Initiative:
 - Implemented in October, 2002 by AIDS Project Los Angeles
 - To conduct a needs assessment and provide harm reduction outreach; influence social/behavioral norms using a Popular Opinion Leader model
 - Facilitate CSV-based HIV/STD testing by CBOs
 - Collaborate with CSV owners, CBOs, and Public Health to draft guidelines

Challenges of the CSV Initiative (1)

- Popular Opinion Leader Project did not reach 15% saturation of the target population
 - CSV owners had concerns about counseling and testing staff wandering/mingling throughout venue to conduct outreach
- The coordination of CSVs to adopt voluntary guidelines was difficult

Challenges of the CSV Initiative (2)

- HIV/STD screening was non-existent in some venues and inconsistent in others
 - Most venues had inadequate space or facilities to conduct HIV/STD testing
 - Owners refused HIV/STD testing services by some CBOs
 - Utilization of screening services by patrons was low

Public Health Process

Los Angeles County
Board of Supervisors
February 3, 2004

- Instructed Public Health to review CSVs and recommend further regulation to prevent HIV and STD transmission

The Public Health Process (1)

- A series of meetings between Public Health units to review evidence of risk and propose CSV standards of operation (February-May, 2004)
- A discussion with CSV owners/managers and CBOs for input (March 23, 2004)
- Submission of an ordinance and recommendations for the regulation of CSVs to the Los Angeles County Board of Supervisors (June 21, 2004)

The Public Health Process (2)

- Ordinance adopted by Board of Supervisors
County Code, Title 11 – Health and Safety
(September 14, 2004)
 - Redefined bathhouses and similar establishments as CSVs
 - Required to obtain Public Health facility permit from Health Officer to operate
 - Authorized Health Officer to initiate sanctions
- Los Angeles City Council Adopted Ordinance
(April 14, 2005)
- CSVs must comply with regulations within six months

CSV Regulations (1)

- **Signage to alert patrons of risk and “rules” at main entry and throughout venue**
 - Prohibiting high-risk behavior
 - Availability of condoms, lube and safer-sex resources
 - Prohibition of alcohol and illegal drugs
- **“Informed consent” signed by patrons of CSV rules**
- **Entry packet providing health education materials, condoms, and lubricant and unlimited and ready availability of free condoms and lubricant in CSV**
- **Provision of health and referral cards**

CSV Regulations (2)

- HIV/STD screening 20 hrs/wk during peak business hours with cost of tests provided by Public Health and personnel cost by owners
- Control of alcohol and illegal drugs
- Staff training in HIV/STD risk reduction
- CSV staff monitoring for prohibited activities
- Sanctions for patrons violating rules

CSV Inspection Process

- PHI worked with DPH Administration, STD Program, OAPP, ADPA and County Counsel to:
 - Develop inspection protocols
 - Draft inspection forms
 - Train inspectors
 - Develop fee collection and permit issuance protocols with TTC

Preliminary Inspections

- Preliminary inspections began Sept. 2007
- Purpose was to bring all CSVs to the level of full compliance
- Found several minor areas of non-compliance
 - Primarily signage and lighting violations
- One CSV had one major area of non-compliance

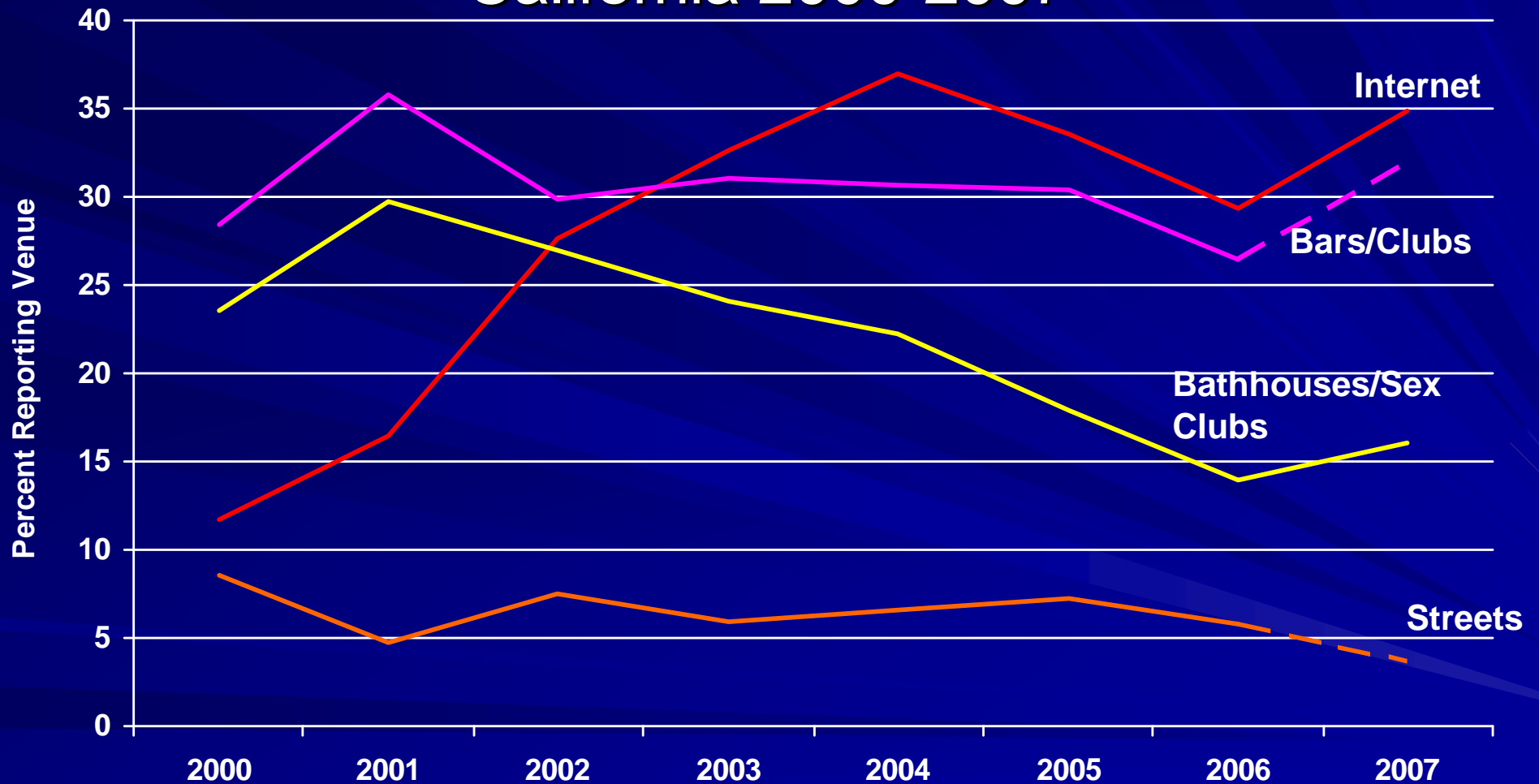
Preliminary Inspections

- Conducted by appointment during the day
- Some CSVs were in full compliance
- A few required multiple re-inspections
- PHI took a collaborative approach with CSV operators
 - Granted extensions when necessary
 - Generally, cooperation was good
 - Received a couple challenges from CSV attorney
 - Resolved amicably with assistance from County Counsel
- All CSVs achieved full compliance by January 2008
- PHI is prepared to begin unannounced, peak hour inspections

Inspection Requirements

- Unannounced inspections of all CSVs will occur at least quarterly
- Inspections will occur during peak hours
- Re-inspections or additional inspections will be arranged as needed

Reported venues used to meet sex partners, interviewed MSM P&S syphilis cases, California 2000-2007



Ongoing and Future Efforts

- Evaluation of CSV ordinance and regulations
- Development of a strategy in collaboration with CSV owners and CBOs to brand, promote, and increase the use of the following by patrons:
 - HIV/STD counseling and testing services
 - Health education and outreach
 - Harm reduction model



Peter R. Kerndt, MD, MPH

Director, STD Program

Los Angeles County Department of Public Health

pkerndt@ph.lacounty.gov