

# Programs and Services

**D**ata on LPHA programs and service areas were collected two ways in this study. First, respondents were asked to identify their top five priorities from a list of 40 public health program areas. (See Appendix B for a link to survey instrument, which includes a comprehensive list of services.) Second, respondents were asked to indicate which public health services were provided in their jurisdiction using the following choices: services are directly provided by the LPHA; the service was provided by the LPHA through contracts; both direct service provision and contracts; the service was provided by others in the jurisdiction but not the LPHA; and the service was not provided at all in the jurisdiction. Respondents were asked to indicate only one provision type for each service.

## SERVICE AND PROGRAM PRIORITY AREAS

In general, communicable disease control, environmental health, and child health were consistently chosen as top priority areas by LPHAs regardless of population of jurisdiction served, metropolitan versus non-metropolitan, and type of LPHA.

Some differences among metropolitan and non-metropolitan LPHAs did exist. Inspections were listed more frequently as a priority for metropolitan area LPHAs, while family planning and home health care services were listed more frequently as a priority for non-metropolitan area LPHAs.

One interesting finding reveals that a direct relationship exists between population size and percent of LPHAs reporting communicable disease control as a top priority—a higher percent of large jurisdictions rank communicable disease control as a high priority, compared with smaller jurisdictions. As for LPHA type, inspections/licensing and family planning were top priorities for city/county, city, and township LPHAs.

## SERVICES AND PROGRAMS PROVIDED

LPHAs provide numerous services to the residents of their jurisdictions. Among the most common services provided by LPHAs in this study were the “core” public health programs associated with traditional local public health:

- adult and childhood immunizations
- communicable disease control
- community assessment
- community outreach & education
- environmental health services
- epidemiology & surveillance programs
- food safety
- health education
- restaurant inspections
- tuberculosis testing

Less common were those programs related to primary care services and chronic disease:

- cardiovascular disease, diabetes, and glaucoma treatment
- behavioral and mental health services
- programs for the homeless
- substance abuse services
- veterinary public health

Recent policy discussions at the national level have begun to address the variation in the type of services provided by LPHAs.<sup>32</sup> Some of these discussions have pointed to the fact that multi-county, district, and regional LPHAs provide a more comprehensive set of services than other types of LPHAs, such as townships or small city LPHAs. Policy makers and others interested in public health infrastructure should closely examine the differences in LPHA service provision by LPHA type and use these data to continue to discuss the costs and benefits of consolidating or regionalizing local public health services in an area.

Furthermore, in light of the ever-changing health services environment, LPHAs are reassessing and redefining their roles within the health care delivery system. This has resulted in LPHAs transitioning their direct delivery services to other providers, and refocusing resources on more population-based services. Despite the fact that many LPHAs are still heavily involved in the provision of certain clinical services, such as immunizations, there is an increasing amount of data to support that many LPHAs are decreasing their direct service provision.

Data on services not provided within local jurisdictions need to be interpreted cautiously in the charts that follow. For example, services may be provided in a community and the LPHA director may not be aware or able to quantify them in a survey response. This is the first time such data have been collected from LPHAs using several of these categories, and thus, there are no baseline data to compare gaps in service provision across the country. If these data prove to be reliable estimates of gaps in service provision, there are some areas across the country that lack basic public health services such as immunizations, communicable disease control, or

environmental health services. Further examination of the lack of certain services provided in local areas will help set an agenda for improving the availability of public health services nationwide.

The charts and tables provided in the following section summarize data on LPHA program and service areas.<sup>33</sup> In the comparisons by LPHA jurisdiction population and LPHA type, a “yes” indicates that the service was directly provided, contracted, or both directly provided and contracted by the LPHA.

Table 2. SERVICES AND PROGRAMS PRIORITY AREAS:  
All LPHAs

	Program Areas (% selected)
First Priority (n=668)	Communicable Disease Control (23%) Child Health (18%) Environmental Health (16%) Inspections and Licensing (6%) Family Planning (5%) Home Health Care (5%)
Second Priority (n=667)	Environmental Health (23%) Child Health (12%) Communicable Disease Control (10%) Family Planning (8%) Inspections and Licensing (8%)
Third Priority (n=661)	Environmental Health (13%) Child Health (10%) Communicable Disease Control (9%) Family Planning (8%)
Fourth Priority (n=660)	Environmental Health (11%) Communicable Disease Control (10%) Mental Health Programs (7%) Child Health (6%)
Fifth Priority (n=649)	Community Outreach and Education (9%) Communicable Disease Control (7%) Environmental Health (7%) Health Education/Risk Reduction (6%)

Table 3. SERVICES AND PROGRAMS PRIORITY AREAS:  
Metropolitan and Non-Metropolitan LPHAs

Metropolitan LPHAs		
First Priority (n=274)	Second Priority (n=272)	Third Priority (n=270)
Communicable Disease Control (25%)	Environmental Health (27%)	Environmental Health (15%)
Environmental Health (25%)	Inspections (13%)	Communicable Disease Control (12%)
Child Health (13%)	Communicable Disease Control (12%)	Child Health (10%)
Inspections (8%)	Child Health (9%)	Inspections (7%)

Non-Metropolitan LPHAs		
First Priority (n=394)	Second Priority (n=394)	Third Priority (n=391)
Communicable Disease Control (22%)	Environmental Health (20%)	Environmental Health (11%)
Child Health (22%)	Child Health (14%)	Family Planning (10%)
Environmental Health (10%)	Family Planning (11%)	Child Health (9%)
Home Health (8%)	Communicable Disease Control (9%)	Behavioral and Mental Health (8%)

Table 4. SERVICES AND PROGRAMS PRIORITY AREAS:  
LPHA Type

Population of Jurisdiction Served	Top Priority Area
County (n=399)	Communicable Disease Control (27%) Child Health (22%) Environmental Health (8%)
City (n=68)	Environmental Health (29%) Communicable Disease Control (21%) Inspections/Licensing (19%)
City-County (n=49)	Communicable Disease Control (24%) Child Health (16%) Family Planning (12%) Environmental Health (12%)
Township (n=98)	Environmental Health (41%) Inspections/Licensing (21%) Child Health (7%) Communicable Disease Control (7%)
Multi-County (n=54)	Communicable Disease Control (31%) Child Health (19%) Environmental Health (19%) Home Health Care (8%)

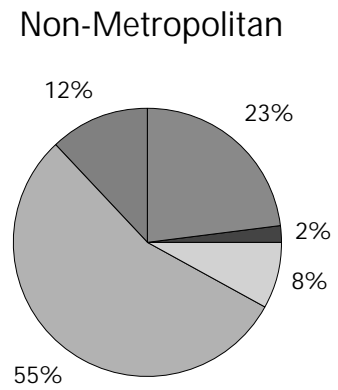
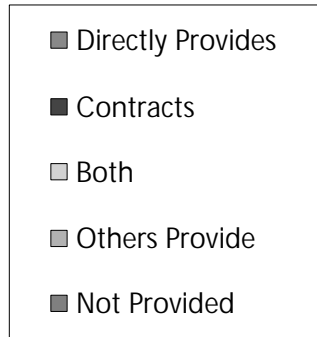
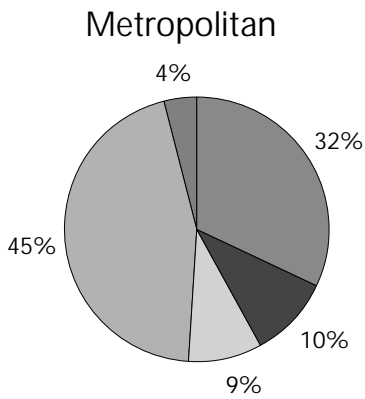
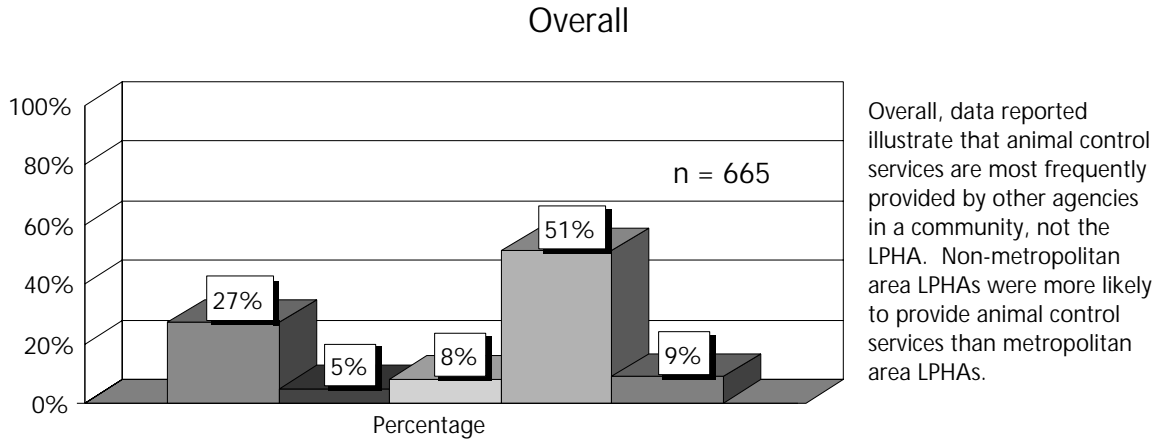
Table 5. SERVICES AND PROGRAMS PRIORITY AREAS:  
Population Size

Population of Jurisdiction Served	Priority Areas
0 to 24,999 (n=333)	Environmental Health (19%) Child Health (18%) Communicable Disease Control (17%)
25,000 to 49,999 (n=130)	Child Health (23%) Communicable Disease Control (21%) Environmental Health (17%)
50,000 to 99,999 (n=88)	Communicable Disease Control (31%) Child Health (17%) Environmental Health (15%)
100,000 to 499,999 (n=92)	Communicable Disease Control (37%) Child Health (15%) Environmental Health (9%)
500,000 + (n=25)	Communicable Disease Control (45%) Child Health (14%) Community Outreach (7%)

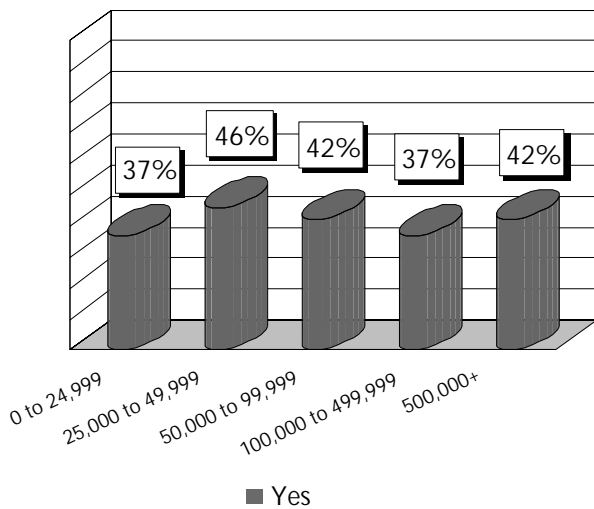
Table 6. LPHA PROGRAMS AND SERVICES:  
Adult Immunization – Influenza, Pneumoccal Disease, Hepatitis B, Tetanus, Diphtheria  
Percent of Services Provided  
Overall, Metropolitan – Non-Metropolitan, Population Size and LPHA Type

Overall					
	Directly Provides	Contracts	Both	Others Provide	Not Provided
Influenza (n=656)	78	5	8	7	3
Pneumoccal Disease (n=650)	63	5	7	20	5
Hepatitis B (n=658)	72	5	9	10	3
Tetanus (n=653)	75	4	7	9	5
Diphtheria (n=648)	73	4	7	11	6
Metropolitan					
	Directly Provides	Contracts	Both	Others Provide	Not Provided
Influenza	74	7	11	6	2
Pneumoccal Disease	65	8	11	13	3
Hepatitis B	68	7	11	9	5
Tetanus	65	7	9	12	7
Diphtheria	62	6	9	14	9
Non-Metropolitan					
	Directly Provides	Contracts	Both	Others Provide	Not Provided
Influenza	81	3	5	7	4
Pneumoccal Disease	61	3	5	25	6
Hepatitis B	75	4	8	11	2
Tetanus	81	2	6	8	3
Diphtheria	81	3	5	8	3
Population Size (percent providing service, contracting or both)					
	0-24,999	25,000-49,999	50,000-99,999	100,000-499,999	500,000+
Influenza	85	95	97	93	93
Pneumoccal Disease	67	73	89	89	91
Hepatitis B	81	89	92	94	91
Tetanus	83	85	92	91	90
Diphtheria	80	82	89	91	90
LPHA Type (percent providing service, contracting or both)					
	County	City	City-County	Township	Multi-County
Influenza	93	94	98	68	96
Pneumoccal Disease	74	85	85	64	83
Hepatitis B	90	89	98	60	90
Tetanus	94	81	97	46	87
Diphtheria	92	76	97	42	87

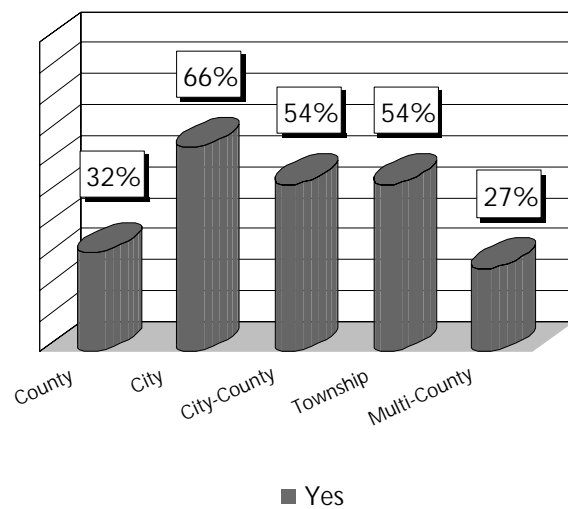
Figure 8. LPHA PROGRAMS AND SERVICES:  
Animal Control



Service Provided by Population Size



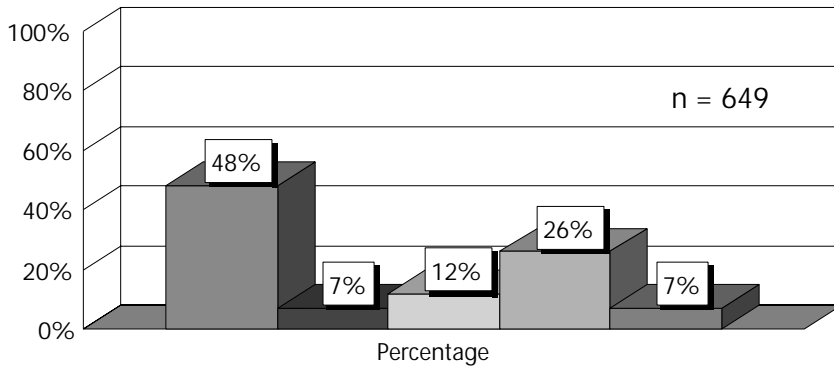
Service Provided by LPHA Type



"Yes" indicates that the service was directly provided, contracted, or both directly provided and/or contracted by the LPHA.

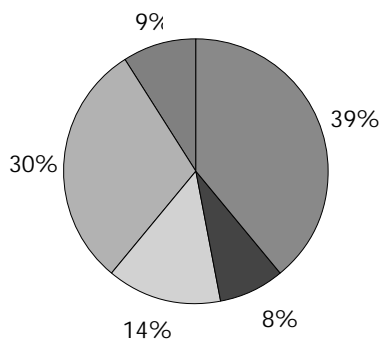
Figure 9. LPHA PROGRAMS AND SERVICES:  
Case Management

Overall

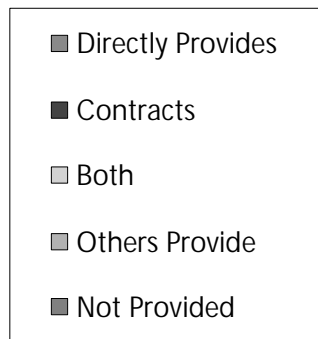
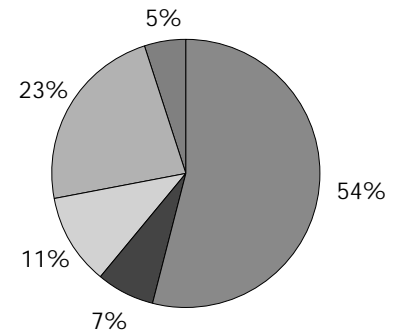


Case management services are directly provided by almost half of all LPHAs. Non-metropolitan area LPHAs more frequently directly provided case management services than metropolitan area LPHAs. Provision of this service varied by LPHA type.

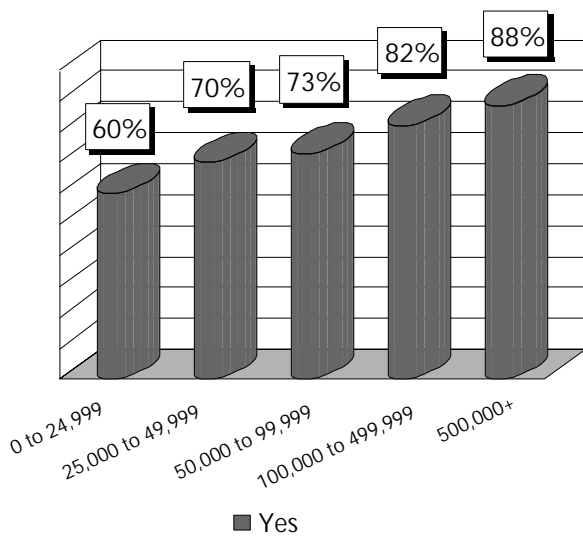
Metropolitan



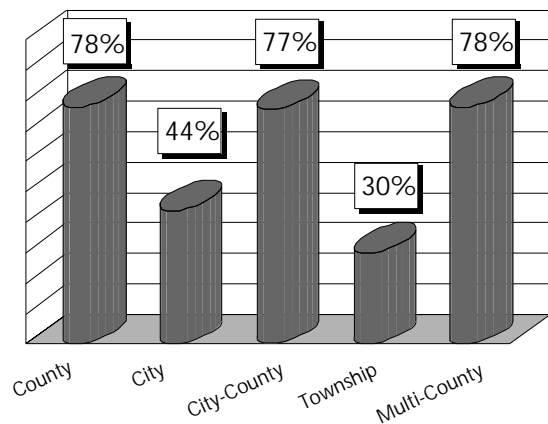
Non-Metropolitan



Service Provided by Population Size



Service Provided by LPHA Type



"Yes" indicates that the service was directly provided, contracted, or both directly provided and/or contracted by the LPHA.

Table 7. LPHA PROGRAMS AND SERVICES:  
Child Health Services--Immunizations, EPSDT, WIC

Percent of Services Provided  
Overall, Metropolitan – Non-Metropolitan, Population Size and LPHA Type

Overall					
	Directly Provides	Contracts	Both	Others Provide	Not Provided
Childhood Immunizations (n=664)	74	5	10	8	3
EPSDT (n=638)	47	5	7	33	8
WIC (n=667)	56	8	3	28	5
Metropolitan					
	Directly Provides	Contracts	Both	Others Provide	Not Provided
Childhood Immunizations	64	7	15	11	3
EPSDT	35	8	8	38	11
WIC	43	9	3	37	8
Non-Metropolitan					
	Directly Provides	Contracts	Both	Others Provide	Not Provided
Childhood Immunizations	81	4	7	5	3
EPSDT	55	4	6	29	6
WIC	65	7	3	23	2
Population Size (percent providing service, contracting or both)					
	0-24,999	25,000-49,999	50,000-99,999	100,000-499,999	500,000+
Childhood Immunizations	81	96	98	98	99
EPSDT	53	60	66	69	76
WIC	61	66	74	79	83
LPHA Type (percent providing service, contracting or both)					
	County	City	City-County	Township	Multi-County
Childhood Immunizations	98	88	99	45	93
EPSDT	67	46	64	19	70
WIC	77	49	74	23	78

Table 8. **LPHA PROGRAMS AND SERVICES:**  
Chronic Disease Control Screening--Cancer, Cardiovascular Disease, Diabetes,  
High Blood Pressure

Percent of Services Provided  
Overall, Metropolitan – Non-Metropolitan, Population Size and LPHA Type

<b>Overall</b>					
	<b>Directly Provides</b>	<b>Contracts</b>	<b>Both</b>	<b>Others Provide</b>	<b>Not Provided</b>
Cancer (n=654)	36	8	14	33	9
Cardiovascular (n=666)	36	4	10	40	10
Diabetes (n=666)	44	4	9	34	9
High Blood Pressure (n=662)	66	5	10	16	3
<b>Metropolitan</b>					
	<b>Directly Provides</b>	<b>Contracts</b>	<b>Both</b>	<b>Others Provide</b>	<b>Not Provided</b>
Cancer	28	6	18	36	12
Cardiovascular	31	6	13	37	13
Diabetes	35	7	10	36	12
High Blood Pressure	55	9	13	20	3
<b>Non-Metropolitan</b>					
	<b>Directly Provides</b>	<b>Contracts</b>	<b>Both</b>	<b>Others Provide</b>	<b>Not Provided</b>
<b>Cancer</b>	<b>41</b>	<b>10</b>	<b>11</b>	<b>31</b>	<b>7</b>
<b>Cardiovascular</b>	<b>39</b>	<b>3</b>	<b>8</b>	<b>43</b>	<b>7</b>
<b>Diabetes</b>	<b>51</b>	<b>2</b>	<b>8</b>	<b>33</b>	<b>6</b>
<b>High Blood Pressure</b>	<b>73</b>	<b>2</b>	<b>8</b>	<b>14</b>	<b>3</b>
<b>Population Size (percent providing service, contracting or both)</b>					
	<b>0-24,999</b>	<b>25,000-49,999</b>	<b>50,000-99,999</b>	<b>100,000-499,999</b>	<b>500,000+</b>
<b>Cancer</b>	<b>55</b>	<b>58</b>	<b>61</b>	<b>62</b>	<b>79</b>
<b>Cardiovascular</b>	<b>46</b>	<b>56</b>	<b>47</b>	<b>53</b>	<b>72</b>
<b>Diabetes</b>	<b>60</b>	<b>60</b>	<b>46</b>	<b>54</b>	<b>54</b>
<b>High Blood Pressure</b>	<b>80</b>	<b>88</b>	<b>80</b>	<b>74</b>	<b>80</b>
<b>LPHA Type (percent providing service, contracting or both)</b>					
	<b>County</b>	<b>City</b>	<b>City-County</b>	<b>TownShip</b>	<b>Multi-County</b>
<b>Cancer</b>	<b>65</b>	<b>41</b>	<b>69</b>	<b>22</b>	<b>74</b>
<b>Cardiovascular</b>	<b>53</b>	<b>53</b>	<b>39</b>	<b>28</b>	<b>68</b>
<b>Diabetes</b>	<b>63</b>	<b>44</b>	<b>59</b>	<b>33</b>	<b>66</b>
<b>High Blood Pressure</b>	<b>86</b>	<b>82</b>	<b>85</b>	<b>55</b>	<b>81</b>

Table 9. LPHA PROGRAMS AND SERVICES:  
Community Assessment, Community Outreach & Education

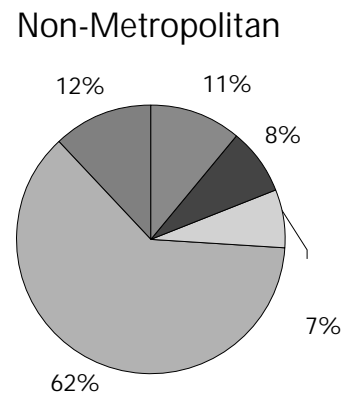
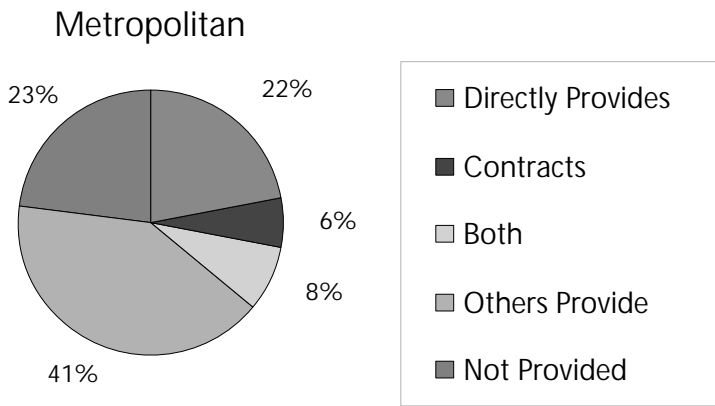
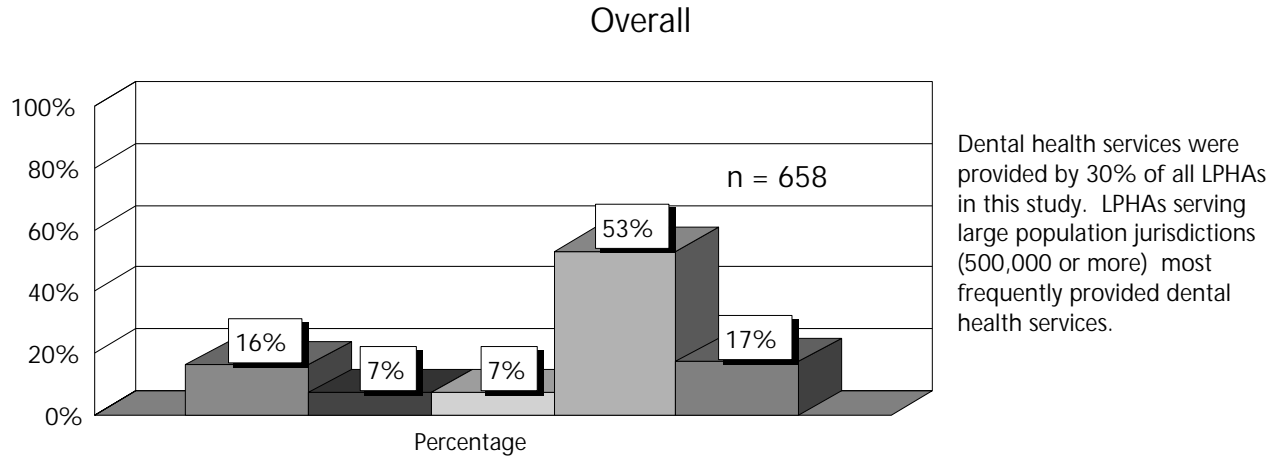
Percent of Services Provided  
Overall, Metropolitan – Non-Metropolitan, Population Size and LPHA Type

Overall					
	Directly Provides	Contracts	Both	Others Provide	Not Provided
Community Assessment (n=652)	61	3	16	10	10
Community Outreach & Education (n=658)	70	2	18	6	5
Metropolitan					
	Directly Provides	Contracts	Both	Others Provide	Not Provided
Community Assessment	54	3	20	13	10
Community Outreach & Education	62	3	25	4	6
Non-Metropolitan					
	Directly Provides	Contracts	Both	Others Provide	Not Provided
Community Assessment	66	3	13	8	10
Community Outreach & Education	75	1	13	7	4
Population Size (percent providing service, contracting or both)					
	0-24,999	25,000-49,999	50,000-99,999	100,000-499,999	500,000+
Community Assessment	75	80	91	85	91
Community Outreach & Education	83	95	95	96	100
LPHA Type (percent providing service, contracting or both)					
	County	City	City-County	Township	Multi-County
Community Assessment	86	75	85	52	87
Community Outreach & Education	94	89	95	62	95

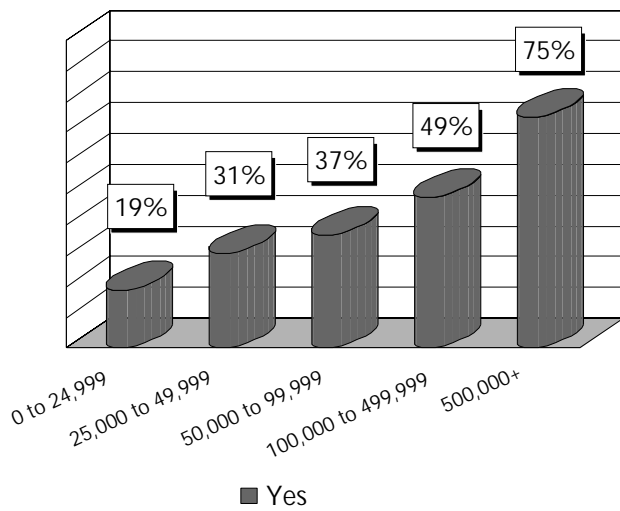
Table 10. LPHA PROGRAMS AND SERVICES:  
 Communicable Disease Control, Epidemiology & Surveillance  
 Percent of Services Provided  
 Overall, Metropolitan – Non-Metropolitan, Population Size and LPHA Type

Overall					
	Directly Provides	Contracts	Both	Others Provide	Not Provided
Communicable Disease Control (n=671)	80	4	10	3	3
Epidemiology & Surveillance (n=663)	70	3	11	11	6
Metropolitan					
	Directly Provides	Contracts	Both	Others Provide	Not Provided
Communicable Disease Control	77	5	11	3	4
Epidemiology & Surveillance	72	2	13	5	8
Non-Metropolitan					
	Directly Provides	Contracts	Both	Others Provide	Not Provided
Communicable Disease Control	83	2	9	4	2
Epidemiology & Surveillance	68	3	9	15	5
Population Size (percent providing service, contracting or both)					
	0-24,999	25,000-49,999	50,000-99,999	100,000-499,999	500,000+
Communicable Disease Control	89	97	100	99	97
Epidemiology & Surveillance	74	90	92	92	98
LPHA Type (percent providing service, contracting or both)					
	County	City	City-County	Township	Multi-County
Communicable Disease Control	99	89	98	68	100
Epidemiology & Surveillance	88	80	85	56	92

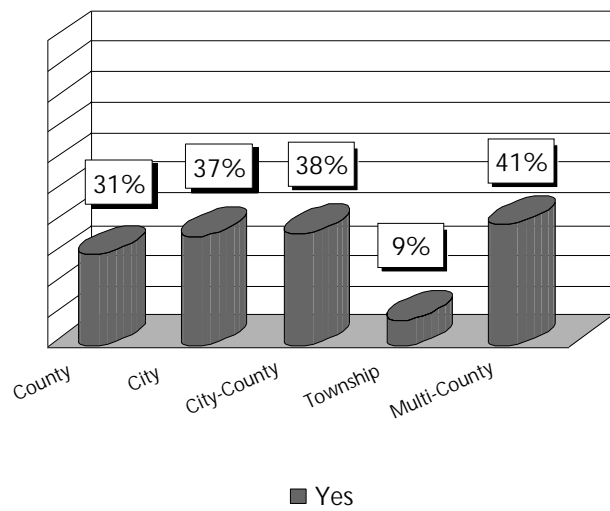
Figure 10. LPHA PROGRAMS AND SERVICES:  
Dental Health



Service Provided by Population Size



Service Provided by LPHA Type



"Yes" indicates that the service was directly provided, contracted, or both directly provided and/or contracted by the LPHA.

Table 11. LPHA PROGRAMS AND SERVICES:  
Environmental Health Services

Percent of Services Provided  
Overall, Metropolitan - Non-Metropolitan, Population Size and LPHA Type

Overall					
	Directly Provides	Contracts	Both	Others Provide	Not Provided
Indoor Air Quality (n=644)	33	5	6	33	22
Emergency Response (n=653)	44	4	13	35	4
Food Safety (n=674)	78	3	4	12	2
Lead Screening & Abatement (n=649)	57	5	12	19	6
Sewage Disposal (n=662)	66	3	5	23	3
Vectors (n=639)	50	3	8	29	10
Surface Water Pollution (n=650)	31	4	8	49	8
Private Drinking Water (n=660)	63	4	5	23	5
Metropolitan					
	Directly Provides	Contracts	Both	Others Provide	Not Provided
Indoor Air Quality	44	7	9	26	14
Emergency Response	46	5	13	33	3
Food Safety	89	0	3	6	2
Lead Screening & Abatement	58	4	15	18	5
Sewage Disposal	71	1	5	19	4
Vectors	61	4	10	18	7
Surface Water Pollution	31	5	8	43	13
Private Drinking Water	63	4	4	20	9
Non-Metropolitan					
	Directly Provides	Contracts	Both	Others Provide	Not Provided
Indoor Air Quality	26	4	4	38	28
Emergency Response	43	3	13	36	5
Food Safety	70	5	5	17	3
Lead Screening & Abatement	58	6	10	20	6
Sewage Disposal	62	5	5	26	2
Vectors	43	3	7	36	11
Surface Water Pollution	31	4	8	52	5
Private Drinking Water	62	4	6	26	2

Table 11. (cont.)

Population Size (percent providing service, contracting or both)					
	0-24,999	25,000-49,999	50,000-99,999	100,000-499,999	500,000+
Indoor Air Quality	37	51	51	52	62
Emergency Response	56	67	64	65	72
Food Safety	80	89	88	92	93
Lead Screening & Abatement	70	78	83	79	85
Sewage Disposal	71	77	78	79	69
Vectors	54	66	72	68	76
Surface Water Pollution	45	41	37	43	43
Private Drinking Water	70	70	74	82	63
LPHA Type (percent providing service, contracting or both)					
	County	City	City-County	Township	Multi-County
Indoor Air Quality	41	61	54	47	41
Emergency Response	63	68	63	44	63
Food Safety	84	93	84	82	91
Lead Screening & Abatement	79	76	80	51	87
Sewage Disposal	76	66	75	70	78
Vectors	58	84	68	61	60
Surface Water Pollution	44	36	45	47	36
Private Drinking Water	76	50	77	66	72

Table 12. LPHA PROGRAMS AND SERVICES:  
Family Planning, Maternal Health, Prenatal Care

Percent of Services Provided  
Overall, Metropolitan – Non-Metropolitan, Population Size and LPHA Type

Overall					
	Directly Provides	Contracts	Both	Others Provide	Not Provided
Family Planning (n=668)	44	6	8	33	8
Maternal Health (n=659)	50	7	13	23	7
Prenatal Care (n=664)	22	8	11	49	9
Metropolitan					
	Directly Provides	Contracts	Both	Others Provide	Not Provided
Family Planning	31	6	9	40	14
Maternal Health	40	7	16	26	11
Prenatal Care	22	9	11	46	12
Non-Metropolitan					
	Directly Provides	Contracts	Both	Others Provide	Not Provided
Family Planning	52	7	8	28	5
Maternal Health	56	7	11	21	5
Prenatal Care	22	8	12	50	8
Population Size (percent providing service, contracting or both)					
	0-24,999	25,000-49,999	50,000-99,999	100,000-499,999	500,000+
Family Planning	52	57	66	68	82
Maternal Health	60	70	82	85	94
Prenatal Care	34	39	51	57	66
LPHA Type (percent providing service, contracting or both)					
	County	City	City-County	Township	Multi-County
Family Planning	72	36	56	9	70
Maternal Health	80	60	71	24	88
Prenatal Care	45	34	54	18	59

Table 13. LPHA PROGRAMS AND SERVICES:  
HIV/AIDS, Sexually Transmitted Disease, Tuberculosis Services

Percentage of Services Provided  
Overall, Metropolitan – Non-Metropolitan, Population Size and LPHA Type

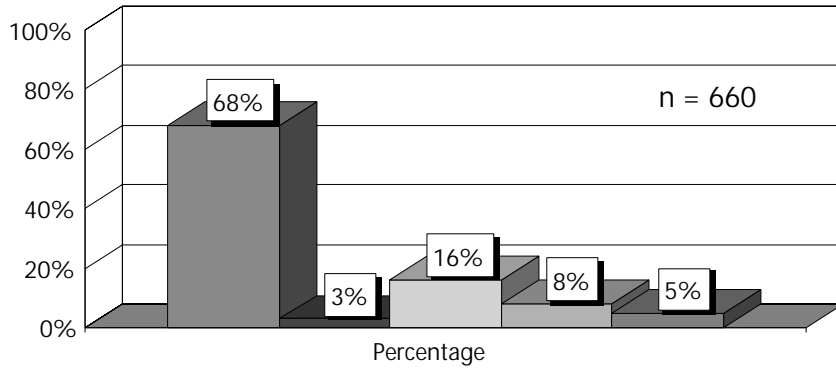
Overall					
	Directly Provides	Contracts	Both	Others Provide	Not Provided
HIV/AIDS Testing & Counseling (n=666)	52	5	7	27	8
HIV/AIDS Treatment (n=666)	14	5	6	65	11
STD Testing & Counseling (n=666)	53	4	8	26	8
Tuberculosis Testing (n=667)	74	5	9	8	4
Tuberculosis Treatment (n=669)	56	5	10	24	5
Metropolitan					
	Directly Provides	Contracts	Both	Others Provide	Not Provided
HIV/AIDS Testing & Counseling	47	6	8	26	13
HIV/AIDS Treatment	15	6	7	58	14
STD Testing & Counseling	48	5	9	27	11
Tuberculosis Testing	67	8	11	8	6
Tuberculosis Treatment	46	6	10	30	8
Non-Metropolitan					
	Directly Provides	Contracts	Both	Others Provide	Not Provided
HIV/AIDS Testing & Counseling	56	5	7	27	5
HIV/AIDS Treatment	14	4	4	69	9
STD Testing & Counseling	57	4	8	26	5
Tuberculosis Testing	79	3	7	9	2
Tuberculosis Treatment	63	4	10	20	3

Table 13. (cont.)

Population Size (percent providing service, contracting or both)					
	0-24,999	25,000-49,999	50,000-99,999	100,000-499,999	500,000+
HIV/AIDS Testing & Counseling	51	62	83	93	93
HIV/AIDS Treatment	19	19	26	41	54
STD Testing & Counseling	54	64	81	91	94
Tuberculosis Testing	79	95	96	96	94
Tuberculosis Treatment	63	74	75	85	91
LPHA Type (percent providing service, contracting or both)					
	County	City	City-County	Township	Multi-County
HIV/AIDS Testing & Counseling	80	43	73	11	72
HIV/AIDS Treatment	29	18	28	5	25
STD Testing & Counseling	80	60	76	6	69
Tuberculosis Testing	96	87	99	45	90
Tuberculosis Treatment	85	48	90	17	71

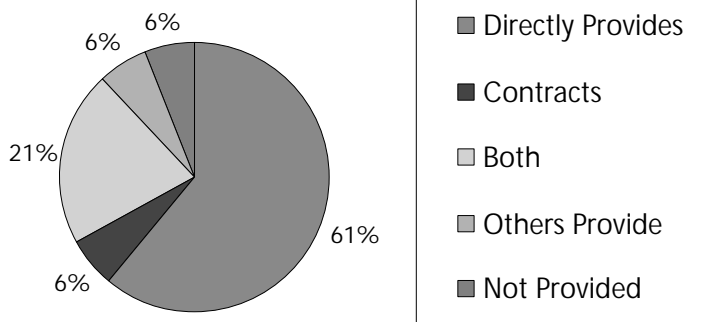
Figure 11. LPHA PROGRAMS AND SERVICES:  
Health Education/Risk Reduction

Overall

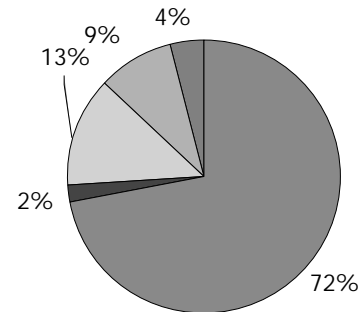


Health education and risk reduction programs were frequently provided LPHA services. 87% of all responding LPHAs and 100% of all large population LPHAs provided these services in their jurisdictions. In 1992-1993, NACCHO reported 84% of all LPHAs provided this service – almost identical to the current research.

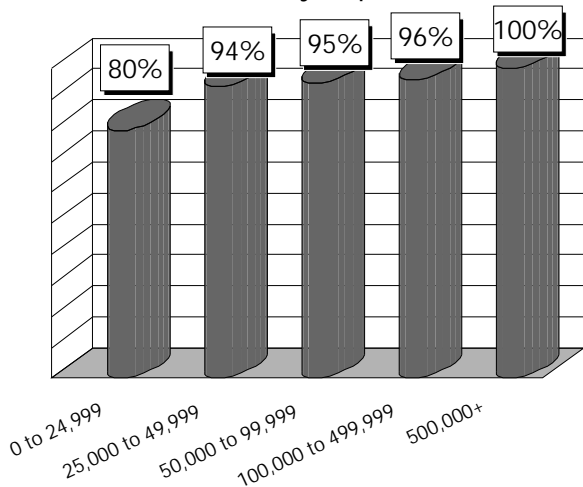
Metropolitan



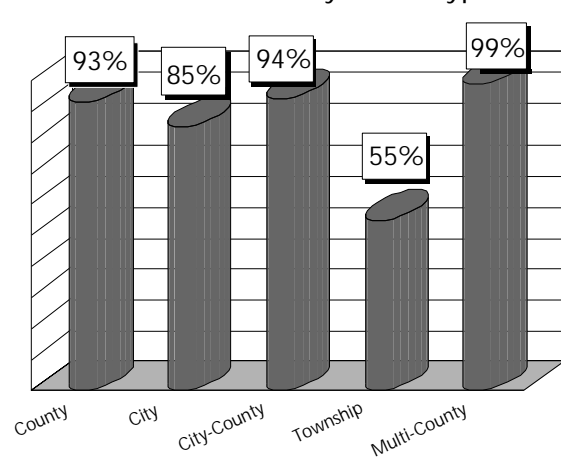
Non-Metropolitan



Service Provided by Population Size



Service Provided by LPHA Type

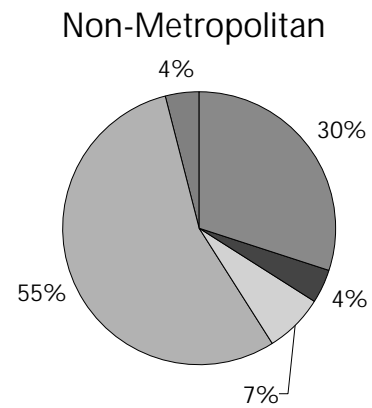
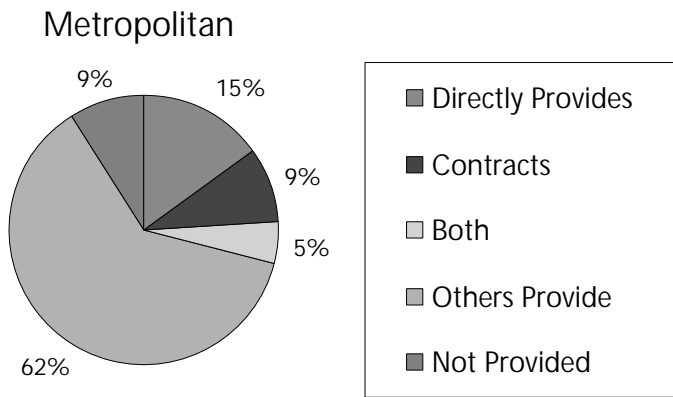
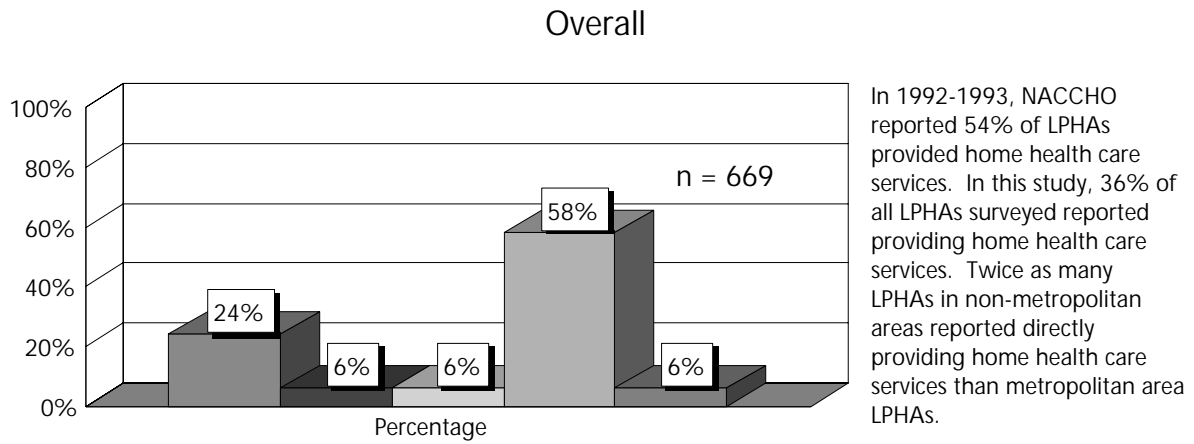


■ Yes

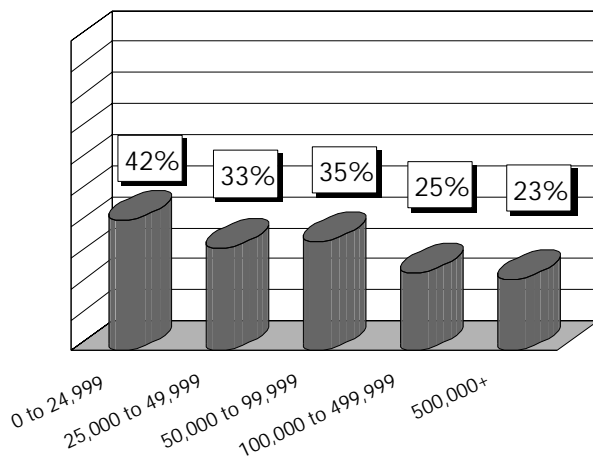
■ Yes

"Yes" indicates that the service was directly provided, contracted, or both directly provided and/or contracted by the LPHA.

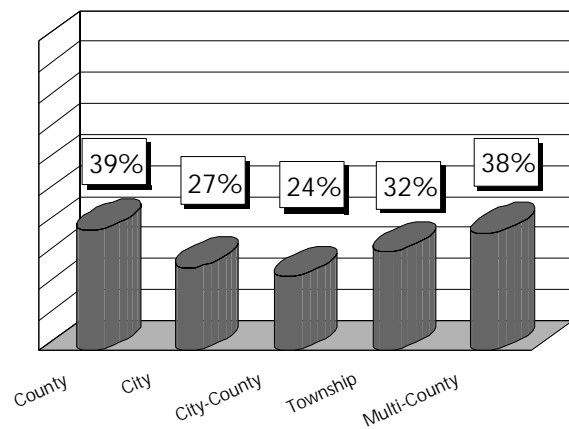
Figure 12. LPHA PROGRAMS AND SERVICES:  
Home Health Care



**Service Provided by Population Size**



**Service Provided by LPHA Type**

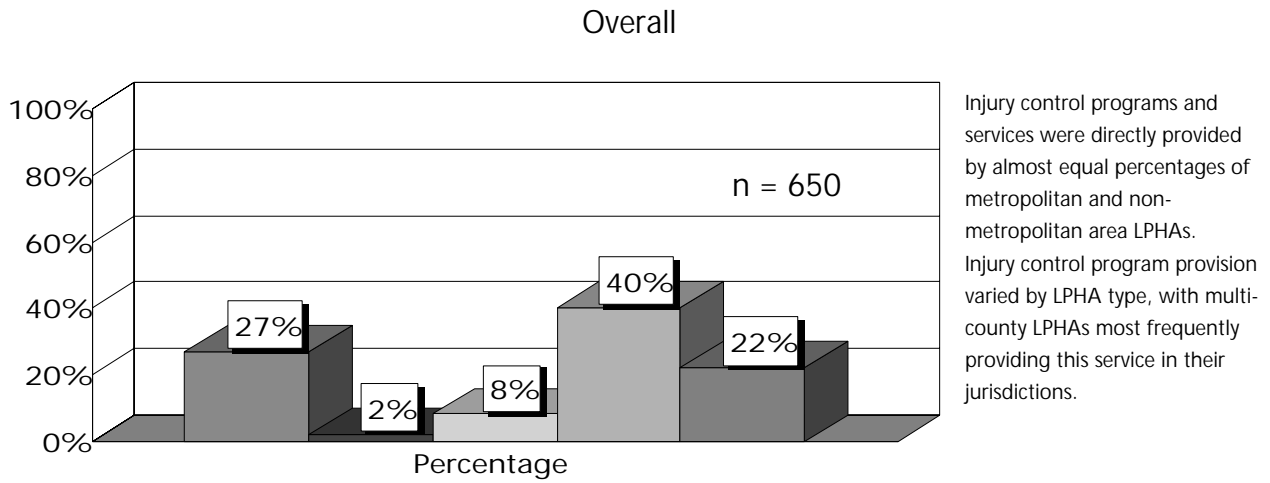


■ Yes

■ Yes

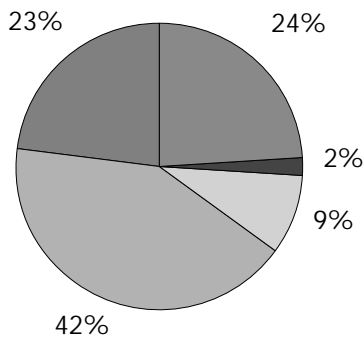
"Yes" indicates that the service was directly provided, contracted, or both directly provided and/or contracted by the LPHA.

Figure 13. LPHA PROGRAMS AND SERVICES:  
Injury Control

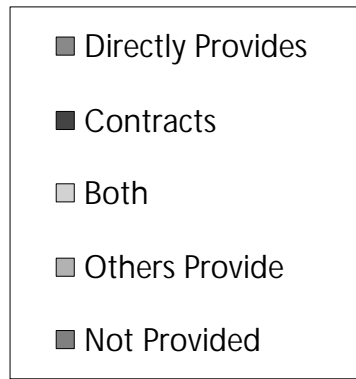
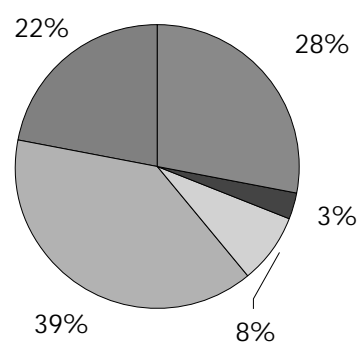


Injury control programs and services were directly provided by almost equal percentages of metropolitan and non-metropolitan area LPHAs. Injury control program provision varied by LPHA type, with multi-county LPHAs most frequently providing this service in their jurisdictions.

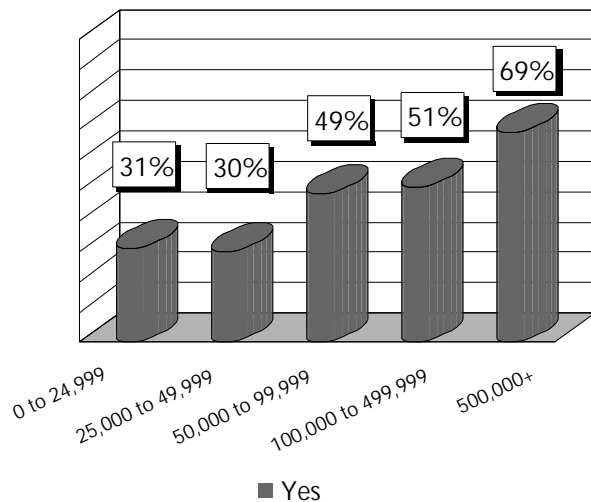
Metropolitan



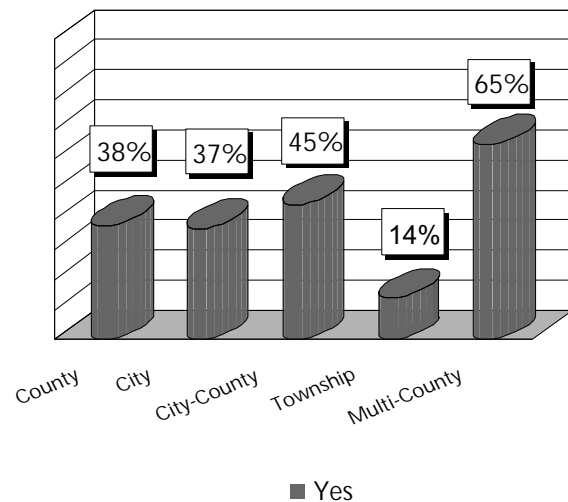
Non-Metropolitan



Service Provided by Population Size



Service Provided by LPHA Type



"Yes" indicates that the service was directly provided, contracted, or both directly provided and/or contracted by the LPHA.

Table 14. LPHA PROGRAMS AND SERVICES:  
Inspections and Licensing

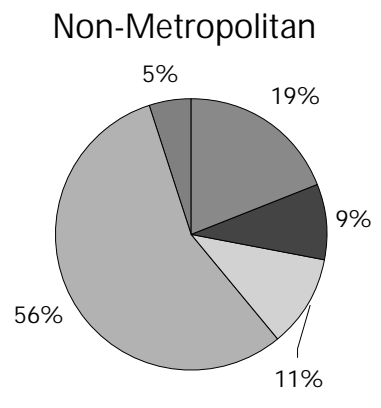
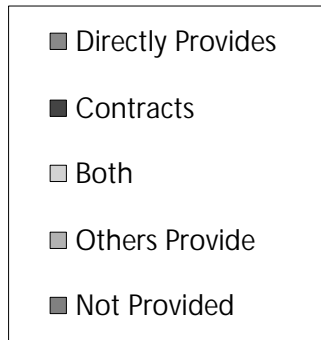
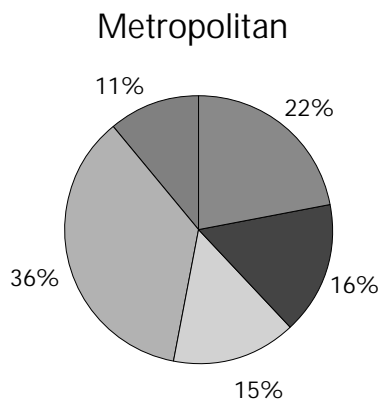
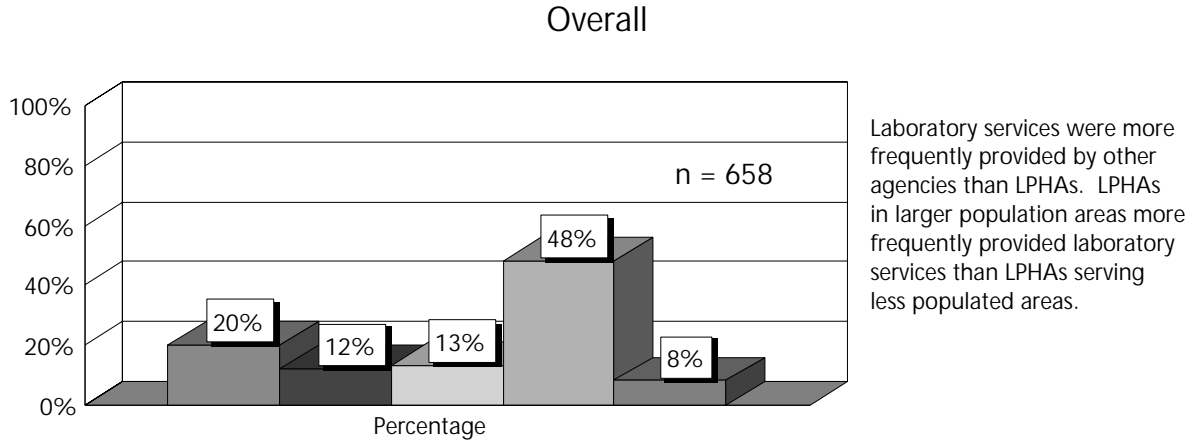
Percent of Services Provided  
Overall, Metropolitan – Non-Metropolitan, Population Size and LPHA Type

Overall					
	Directly Provides	Contracts	Both	Others Provide	Not Provided
Food & Milk (n=643)	57	2	3	34	3
Public Drinking Water (n=653)	33	3	8	53	4
Private Drinking Water (n=656)	59	3	3	27	7
Recreational Water (n=653)	42	3	4	42	9
Restaurants (n=670)	76	2	2	19	1
Health Related Facilities (n=662)	29	3	6	56	7
Metropolitan					
	Directly Provides	Contracts	Both	Others Provide	Not Provided
Food & Milk	70	1	5	22	2
Public Drinking Water	32	4	9	48	7
Private Drinking Water	61	2	3	21	13
Recreational Water	57	3	4	26	10
Restaurants	89	0	1	8	2
Health Related Facilities	34	3	11	42	10
Non-Metropolitan					
	Directly Provides	Contracts	Both	Others Provide	Not Provided
Food & Milk	49	3	2	42	4
Public Drinking Water	33	2	6	57	2
Private Drinking Water	58	3	4	32	3
Recreational Water	31	3	4	54	8
Restaurants	66	4	2	27	1
Health Related Facilities	25	3	2	66	4

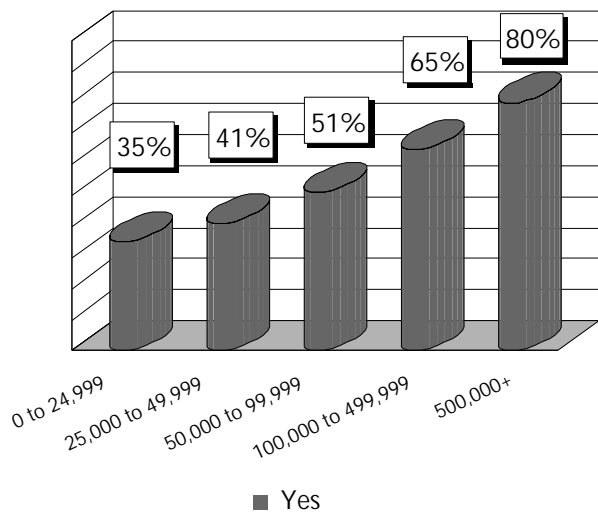
Table 14. (cont.)

Population Size (percent providing service, contracting or both)					
	0-24,999	25,000-49,999	50,000-99,999	100,000-499,999	500,000+
Food & Milk	59	68	67	62	62
Public Drinking Water	45	38	37	47	49
Private Drinking Water	63	65	64	76	60
Recreational Water	41	57	51	55	69
Restaurants	73	85	84	88	85
Health Related Facilities	32	41	41	44	42
LPHA Type (percent providing service, contracting or both)					
	County	City	City-County	Township	Multi-County
Food & Milk	57	82	59	79	59
Public Drinking Water	42	35	42	44	59
Private Drinking Water	69	42	72	61	65
Recreational Water	43	55	50	65	52
Restaurants	76	90	83	80	88
Health Related Facilities	34	56	38	38	35

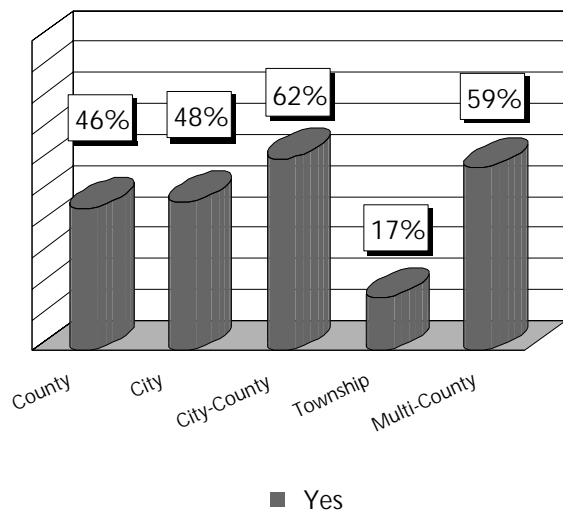
Figure 14. LPHA PROGRAMS AND SERVICES:  
Laboratory Services



**Service Provided by Population Size**

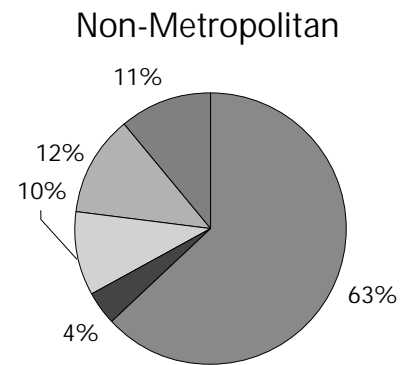
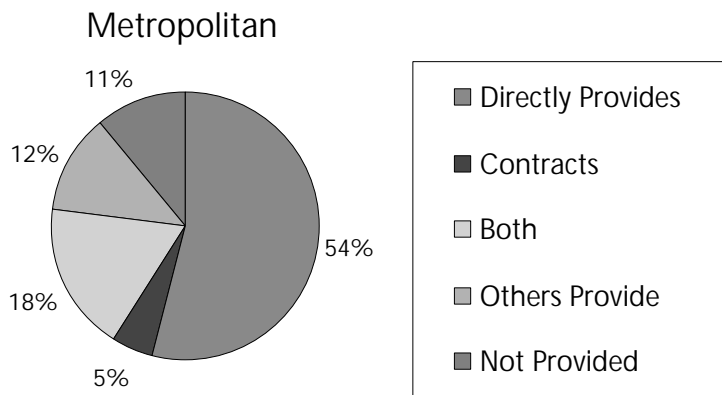
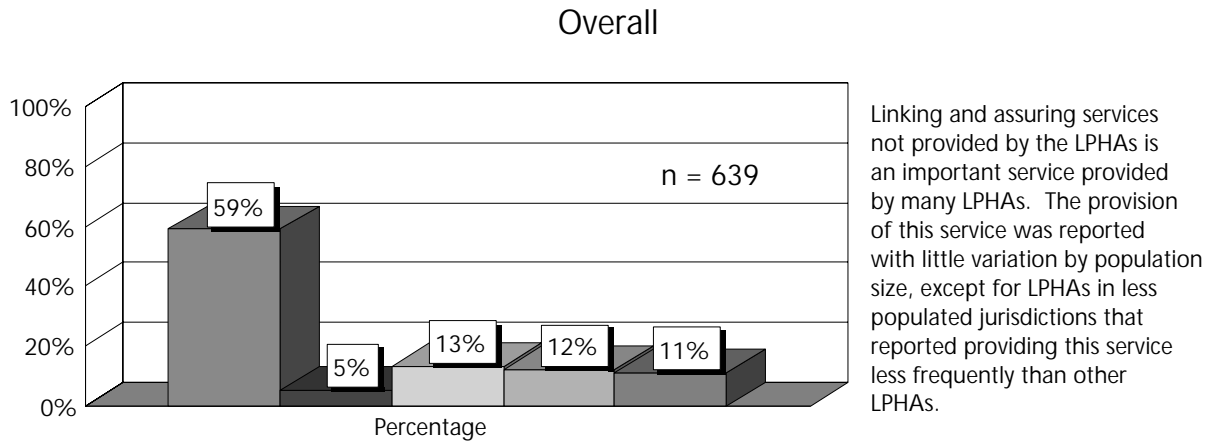


**Service Provided by LPHA Type**

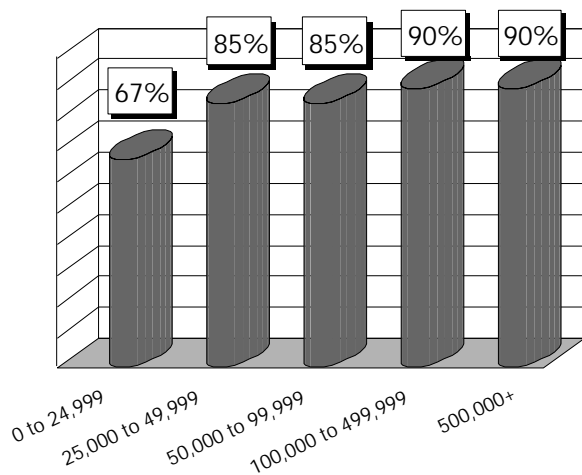


"Yes" indicates that the service was directly provided, contracted, or both directly provided and/or contracted by the LPHA.

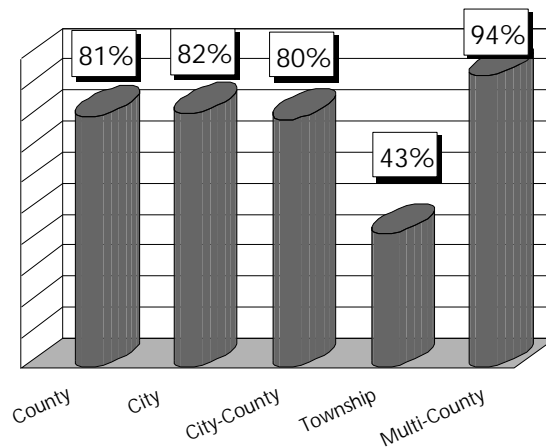
Figure 15. LPHA PROGRAMS AND SERVICES:  
Linking and Assuring Services if Not Provided by LPHA



Service Provided by Population Size



Service Provided by LPHA Type

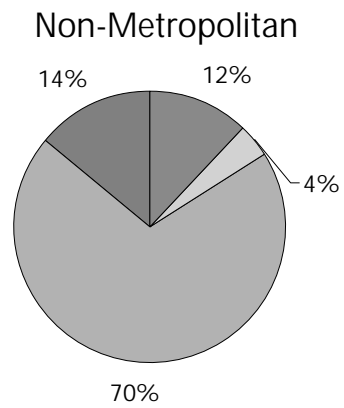
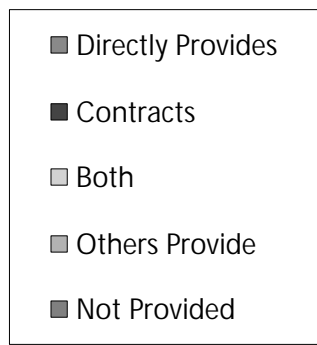
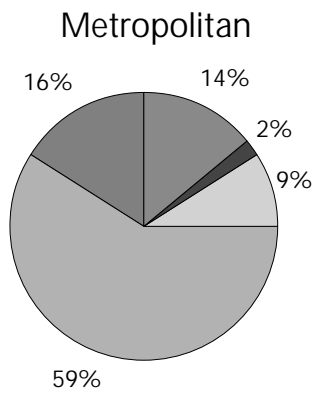
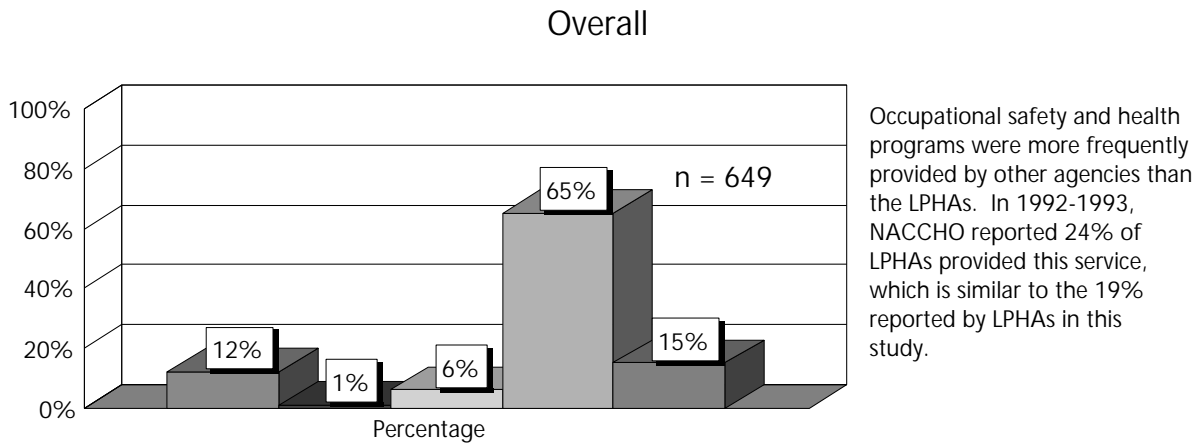


■ Yes

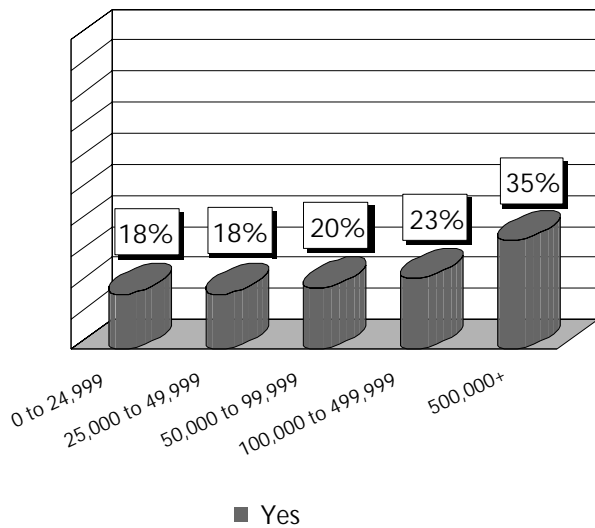
■ Yes

"Yes" indicates that the service was directly provided, contracted, or both directly provided and/or contracted by the LPHA.

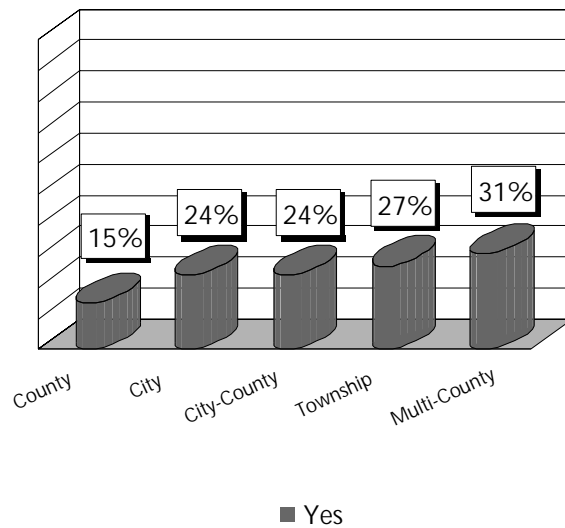
Figure 16. LPHA PROGRAMS AND SERVICES:  
Occupational Safety and Health



Service Provided by Population Size

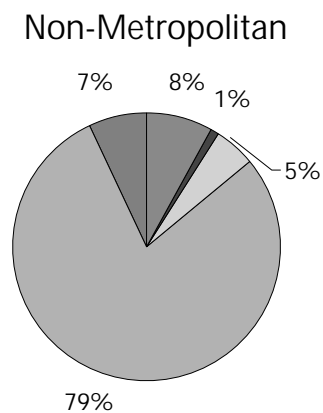
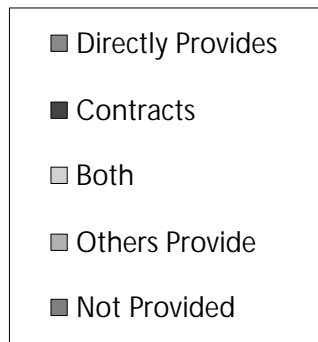
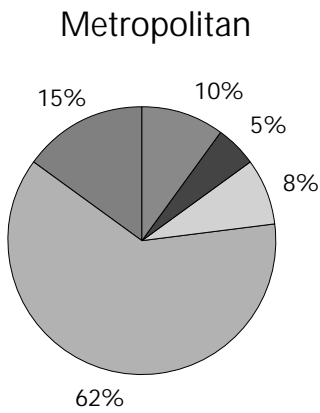
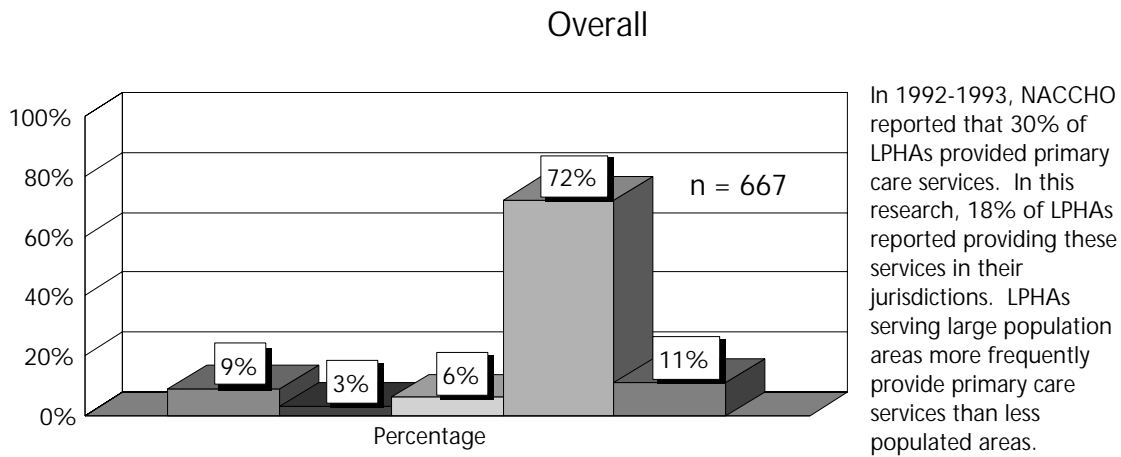


Service Provided by LPHA Type

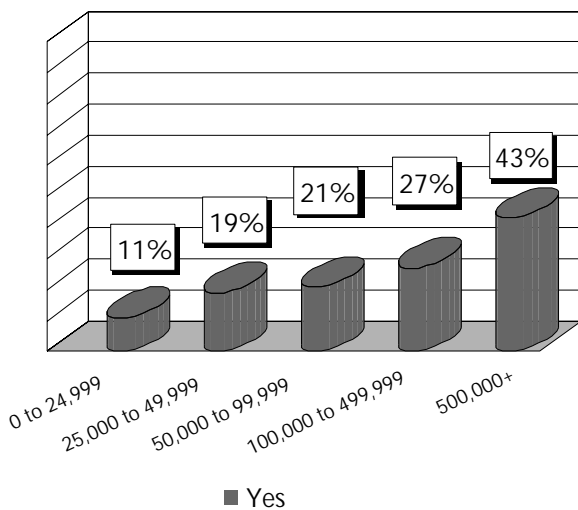


"Yes" indicates that the service was directly provided, contracted, or both directly provided and/or contracted by the LPHA.

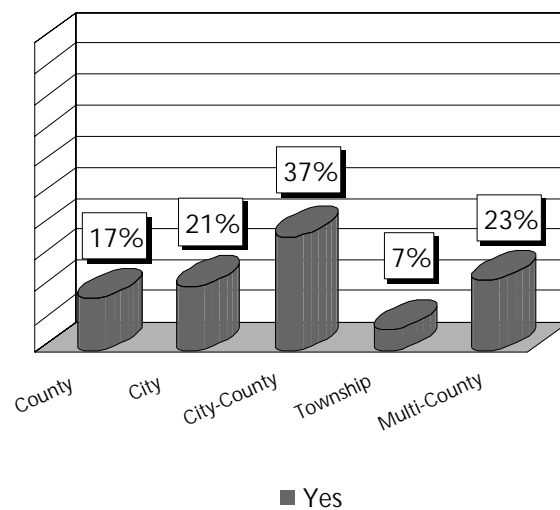
Figure 17. LPHA PROGRAMS AND SERVICES:  
Comprehensive Primary Care Services



Service Provided by Population Size

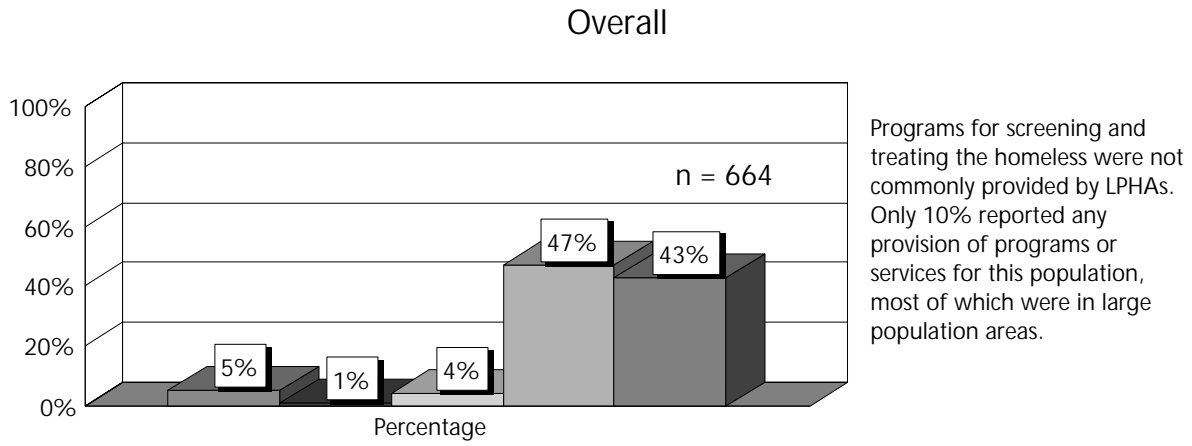


Service Provided by LPHA Type

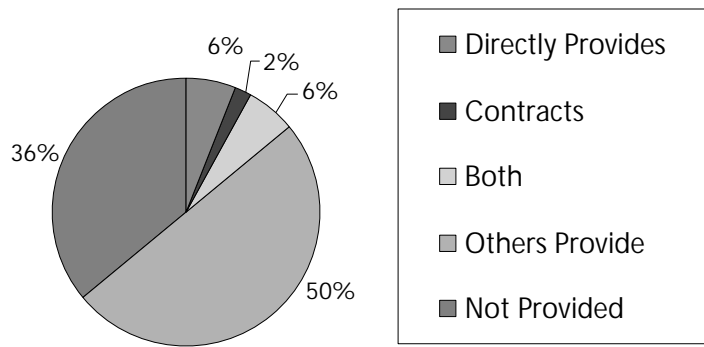


"Yes" indicates that the service was directly provided, contracted, or both directly provided and/or contracted by the LPHA.

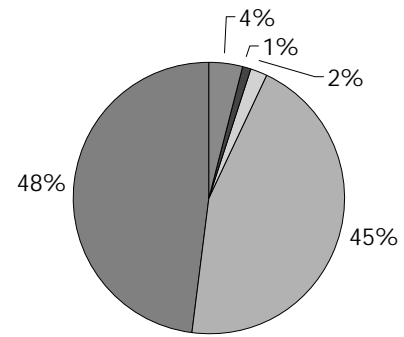
Figure 18. LPHA PROGRAMS AND SERVICES:  
Programs for Screening and Treating the Homeless



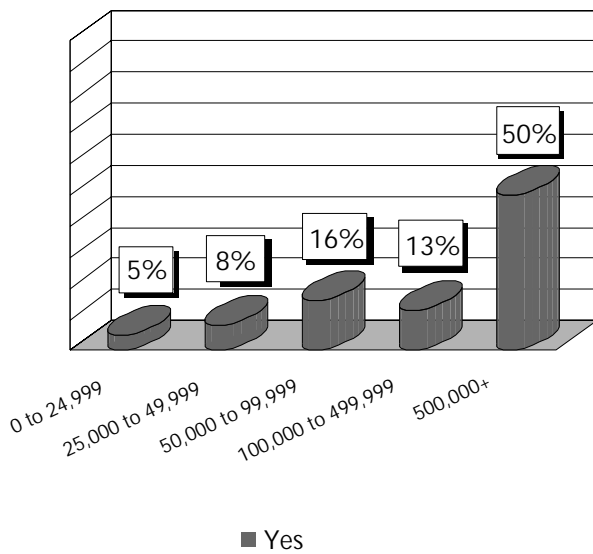
**Metropolitan**



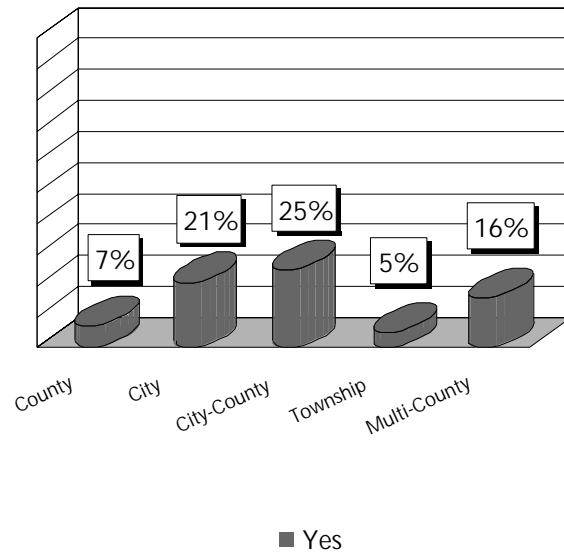
**Non-Metropolitan**



**Service Provided by Population Size**

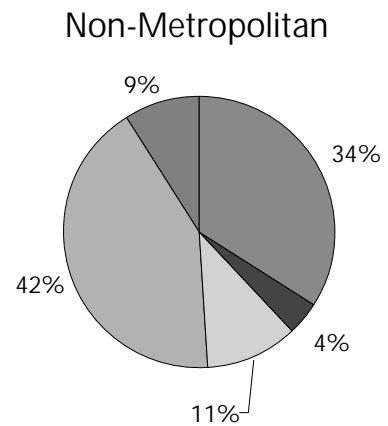
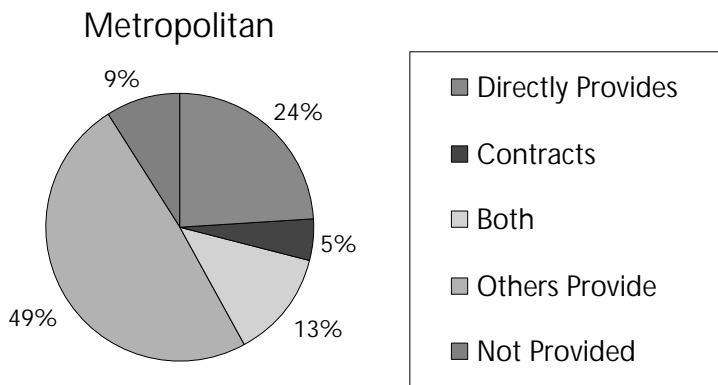
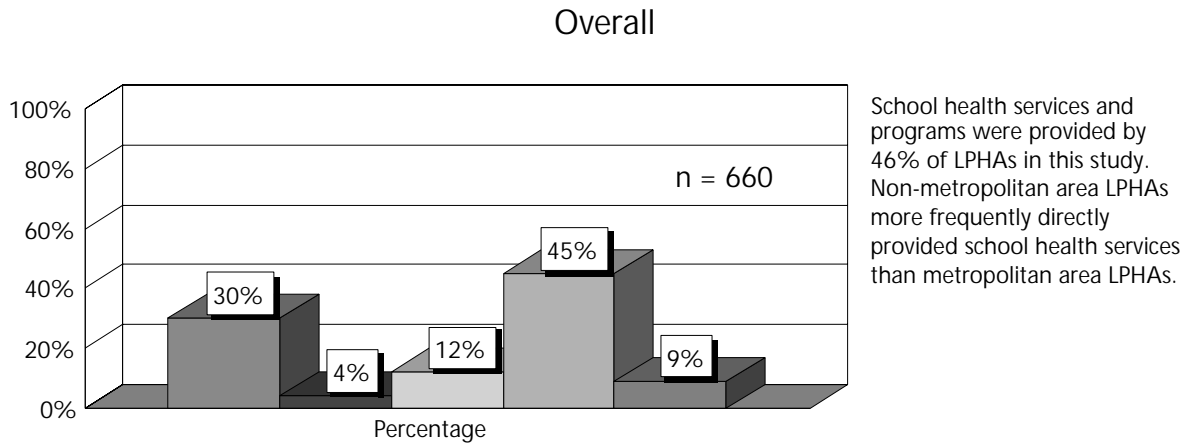


**Service Provided by LPHA Type**

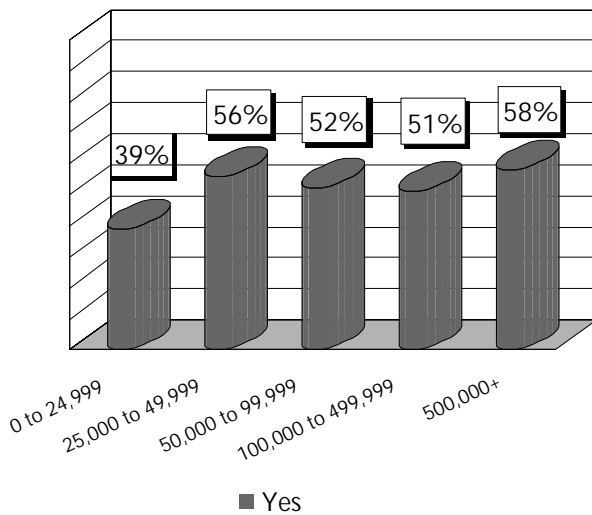


"Yes" indicates that the service was directly provided, contracted, or both directly provided and/or contracted by the LPHA.

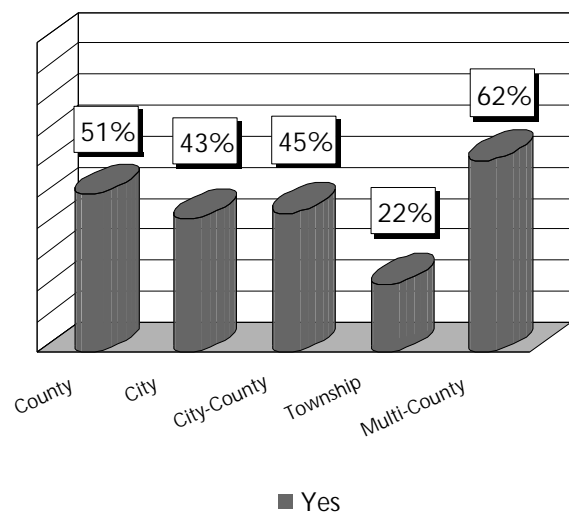
Figure 19. LPHA PROGRAMS AND SERVICES:  
School Health



Service Provided by Population Size



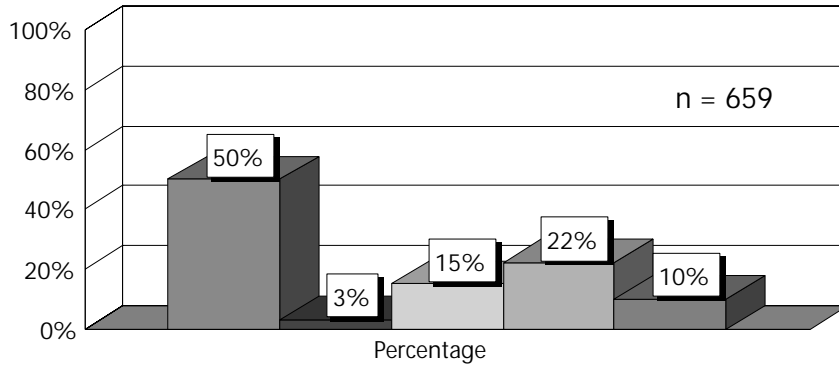
Service Provided by LPHA Type



"Yes" indicates that the service was directly provided, contracted, or both directly provided and/or contracted by the LPHA.

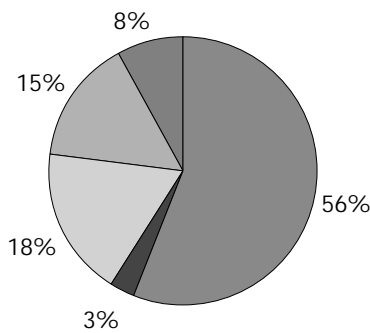
Figure 20. LPHA PROGRAMS AND SERVICES:  
Tobacco Use Prevention

Overall

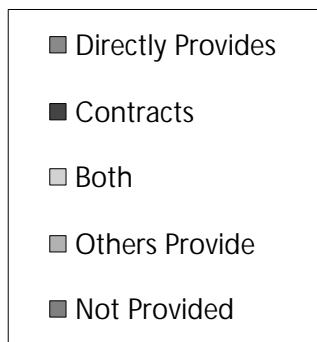
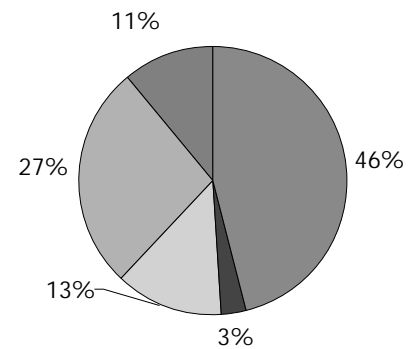


Tobacco use prevention programs were directly provided, provided by contract, or both, by two-thirds of LPHAs. LPHAs serving large population areas more frequently reported providing these services in their jurisdiction.

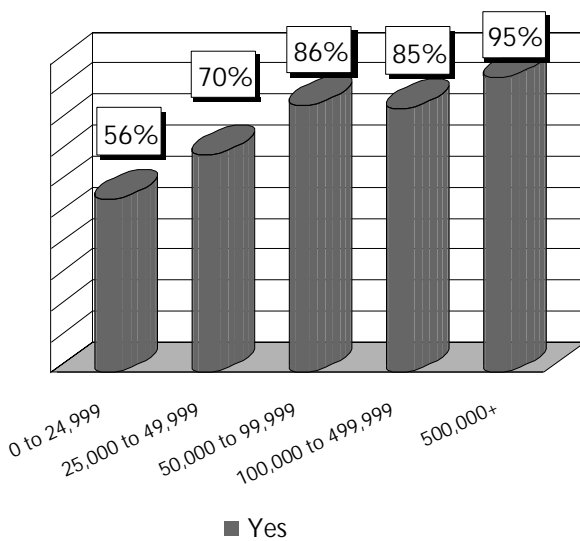
Metropolitan



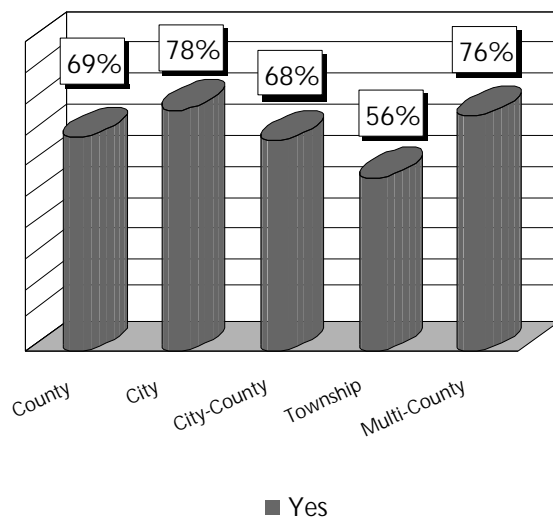
Non-Metropolitan



Service Provided by Population Size

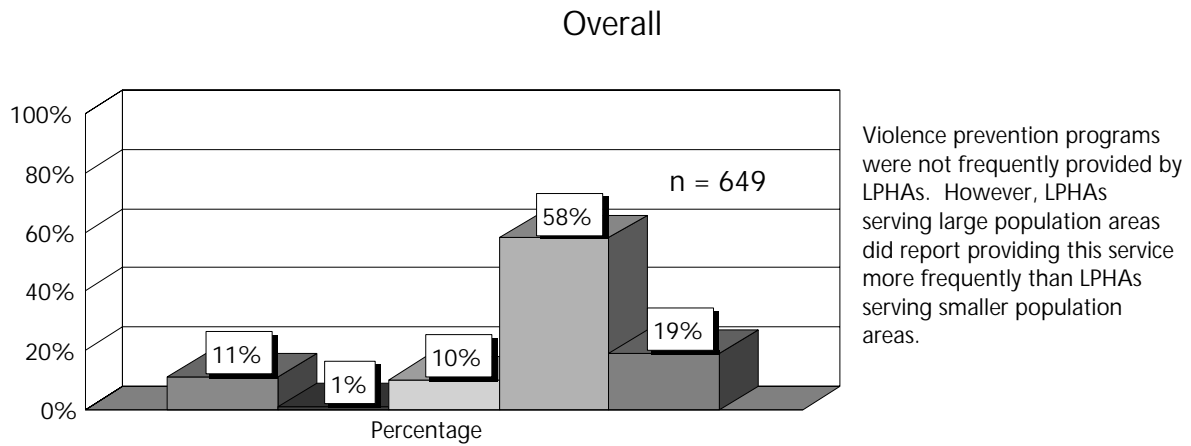


Service Provided by LPHA Type

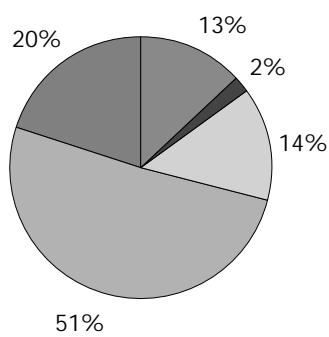


"Yes" indicates that the service was directly provided, contracted, or both directly provided and/or contracted by the LPHA.

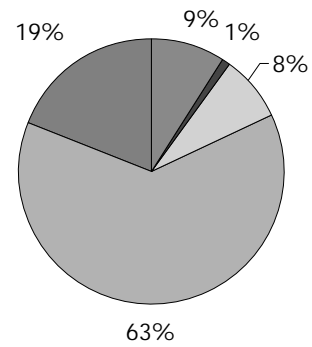
Figure 21. LPHA PROGRAMS AND SERVICES:  
Violence Prevention



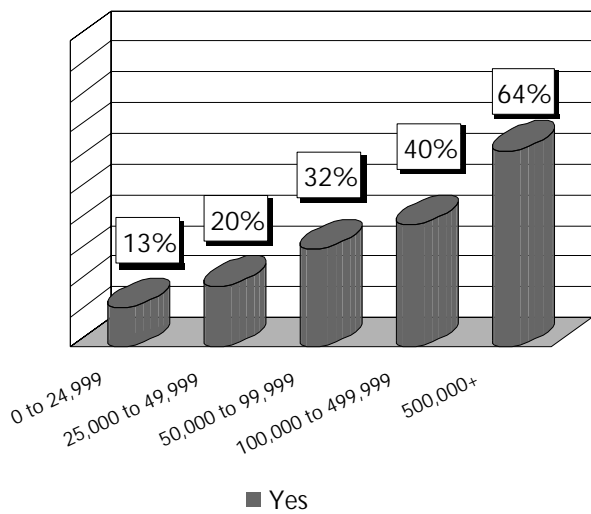
### Metropolitan



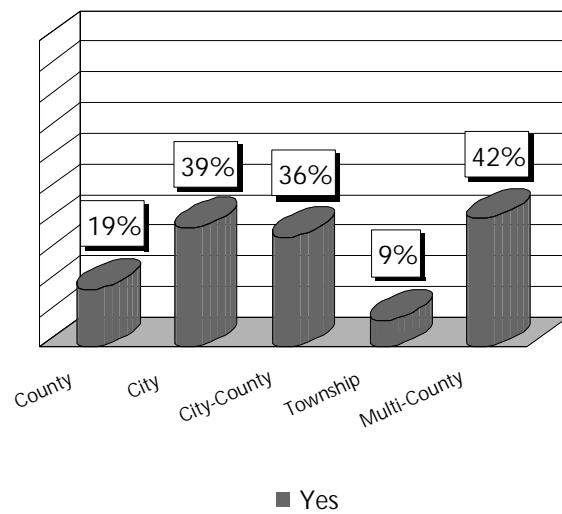
### Non-Metropolitan



### Service Provided by Population Size



### Service Provided by LPHA Type



"Yes" indicates that the service was directly provided, contracted, or both directly provided and/or contracted by the LPHA.