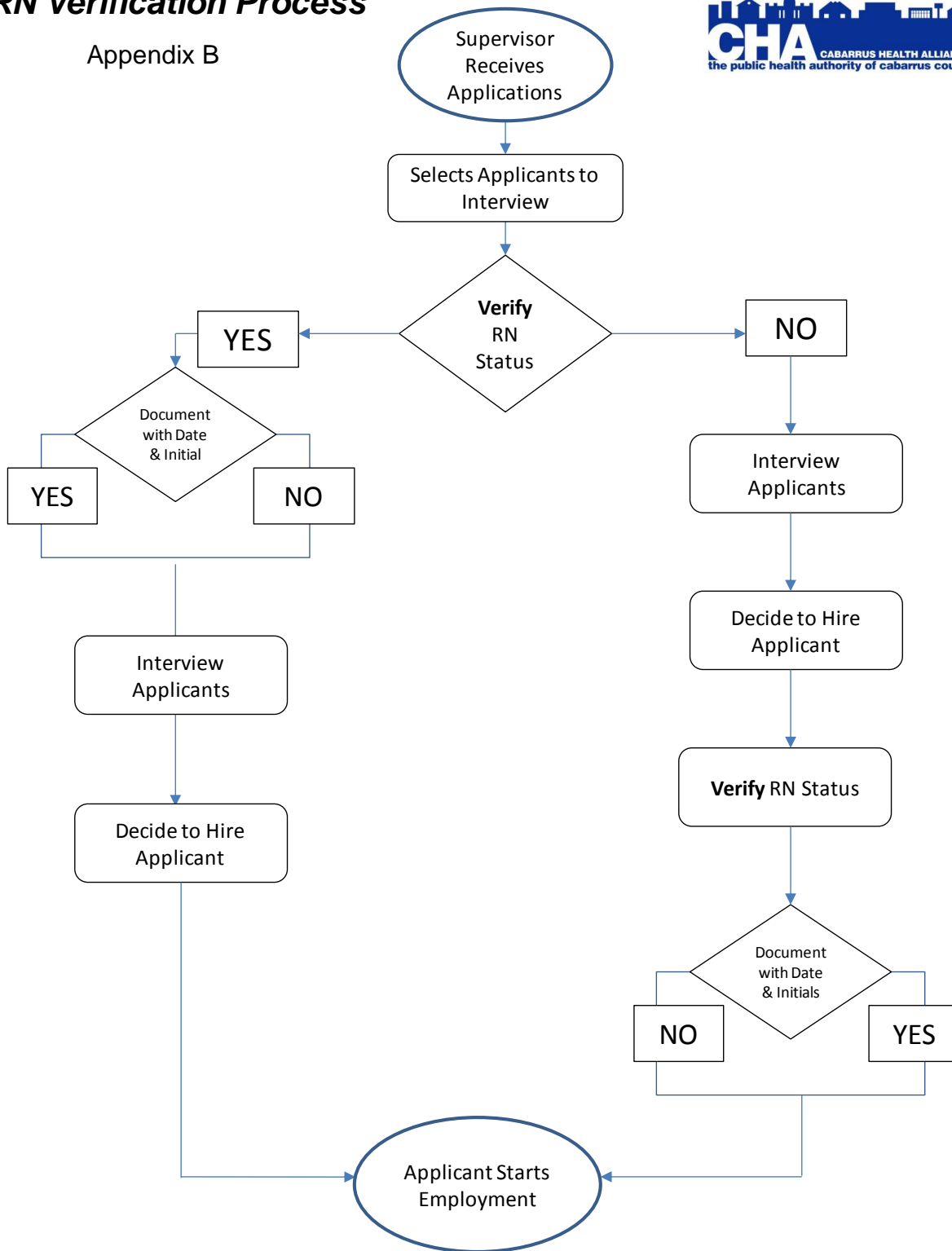


CABARUSS HEALTH ALLIANCE

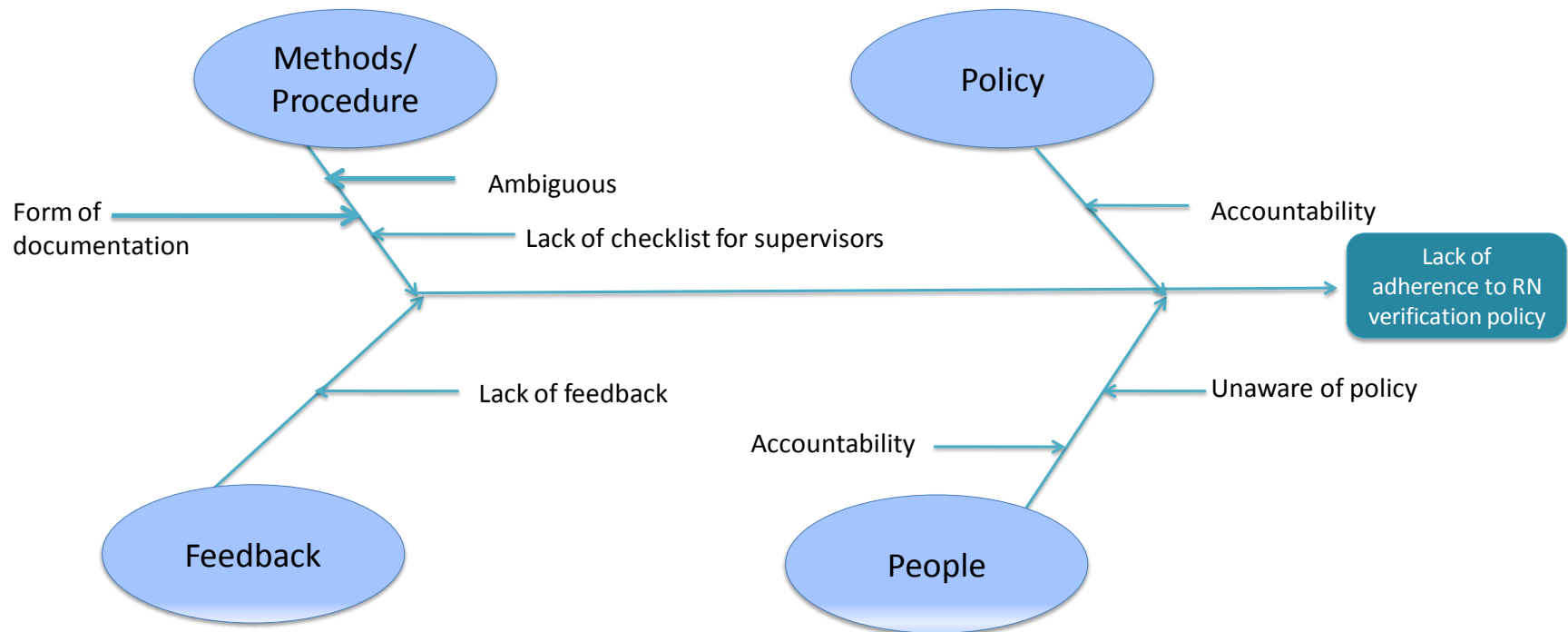
RN Verification Process

Appendix B



Appendix C

***RN VERIFICATION PROCESS
Root Cause Analysis***



Accreditation Beta Test Quality Improvement Project: Appendices

CABARUSS HEALTH ALLIANCE

Appendix D

Pre-Survey Questions

1. Did you know there was a written policy and procedure for verifying the RN status of newly hired nurses?

2. Where would you look for this policy?

3. Who is supposed to verify RN status?

4. When is the RN status supposed to be verified?

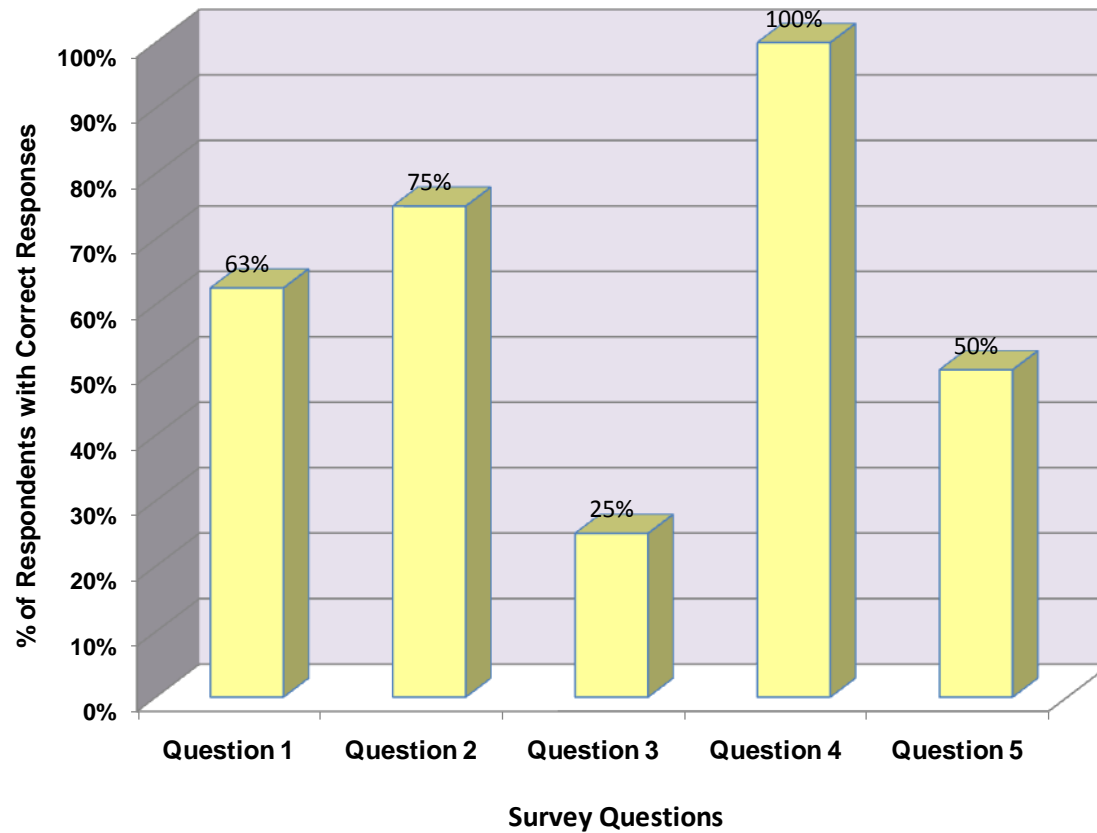
5. How do you document verification of RN status?

6. What would help you follow this procedure?

CABARUSS HEALTH ALLIANCE

Appendix E

RN Verification Pre-Survey Results by Question October 2010

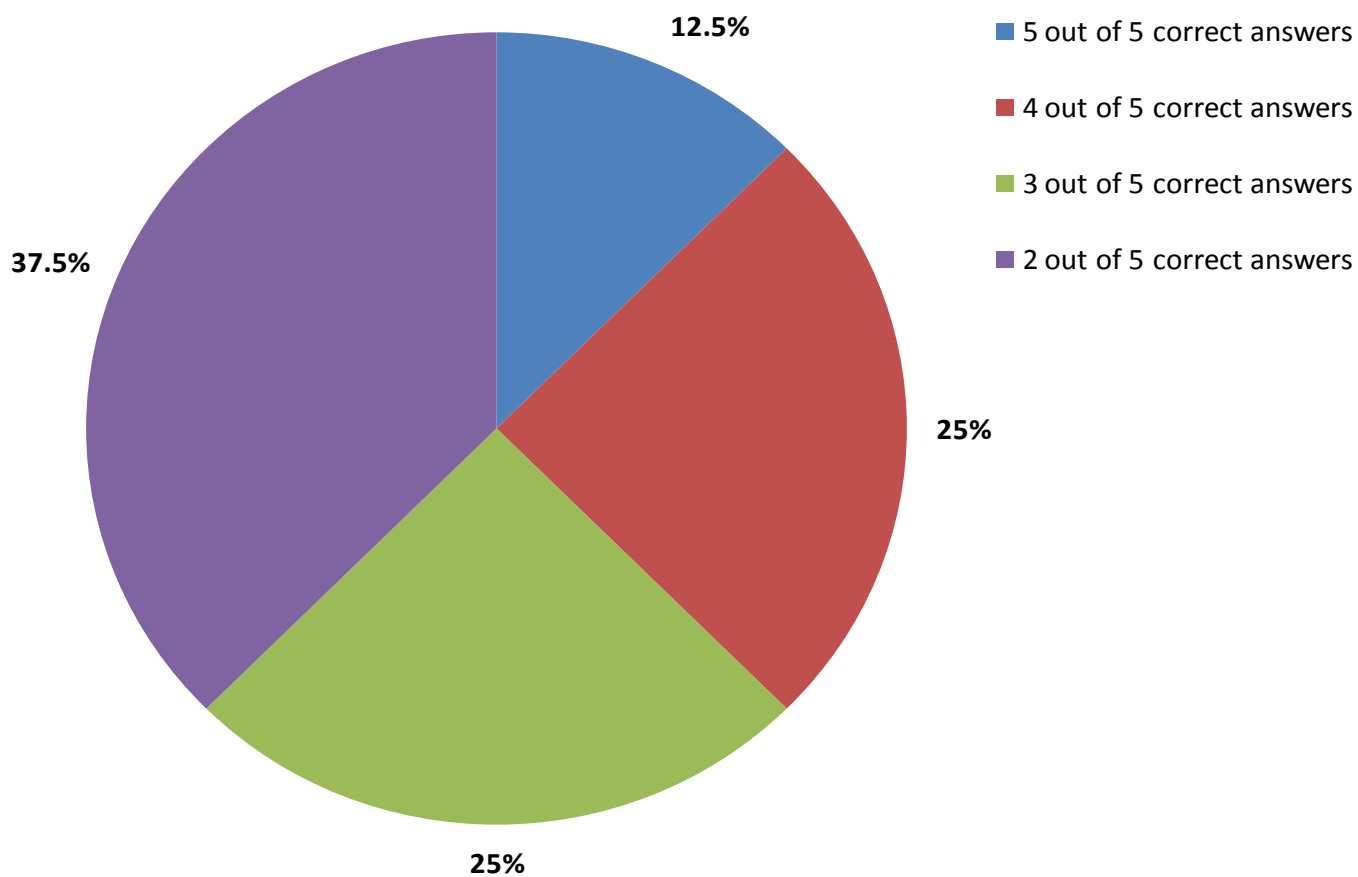


Accreditation Beta Test Quality Improvement Project: Appendices

CABARUSS HEALTH ALLIANCE

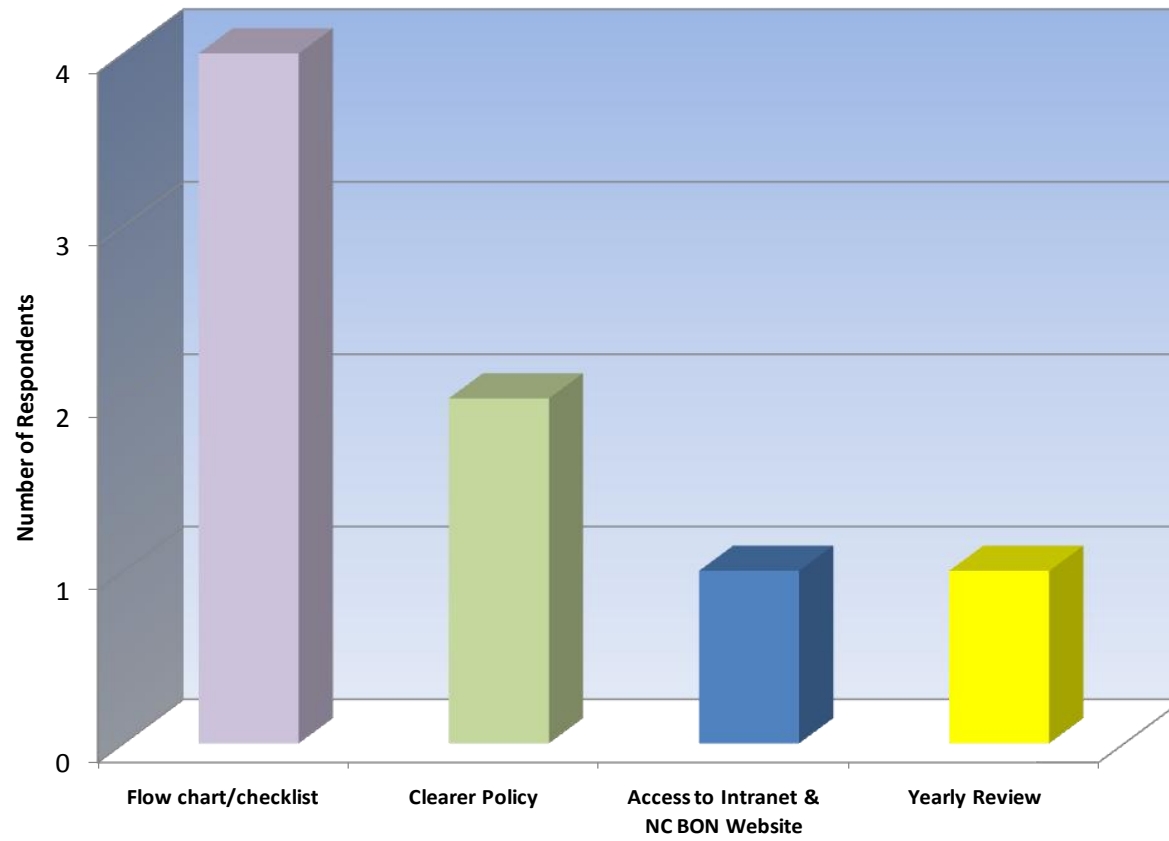
Appendix F

Pre-Test
Percent of Respondents with Correct Answers



Appendix G

RN Verification Survey Recommendations for Improvement



Appendix H

Post-Test
Percent of Respondents with Correct Answers

