

# NACCHO'S 2019 HEALTHCARE-ASSOCIATED INFECTIONS & ANTIBIOTIC RESISTANCE ASSESSMENT FINDINGS

The 2019 Local Health Department (LHD) Healthcare-Associated Infection (HAI) and Antibiotic Resistance (AR) Assessment aimed to describe the current landscape of HAI/AR work being conducted at the local level across the U.S. NACCHO employed a cross-sectional survey design to assess the extent to which LHDs engage in HAI/AR activities, explore existing LHD partner engagement, examine the role that LHDs play in outbreak response, and evaluate LHD capacity and infrastructure in HAI/AR prevention and control.



## HAI/AR ACTIVITIES

LHDs conduct a wide variety of HAI/AR work and most commonly report four key activities.



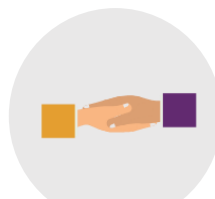
### PROVIDE EDUCATION

and outreach to the public (62%) and to healthcare facilities/providers (45%)



### CONDUCT SURVEILLANCE

for outbreak detection (60%) and to maintain situational awareness (54%)



### COORDINATE WITH THE STATE

to maintain situational awareness (50%) or refer to state's HAI program (40%)

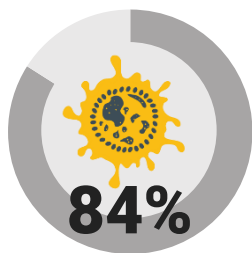


### SUPPORT ANTIBIOTIC STEWARDSHIP

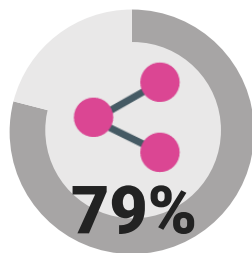
practices and programs that already exist (21%)

## ENGAGEMENT WITH HEALTHCARE FACILITIES

LHDs most frequently engage with nursing homes, skilled nursing facilities, and short-stay acute care hospitals, while some also work with long-term acute care hospitals and dialysis facilities.



partner to conduct outbreak investigation & control



informally share information with a facility



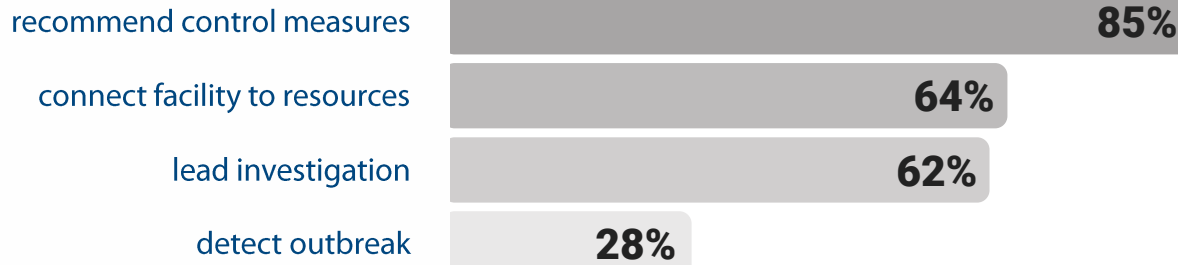
engage to deliver patient or provider education



share data with a healthcare facility

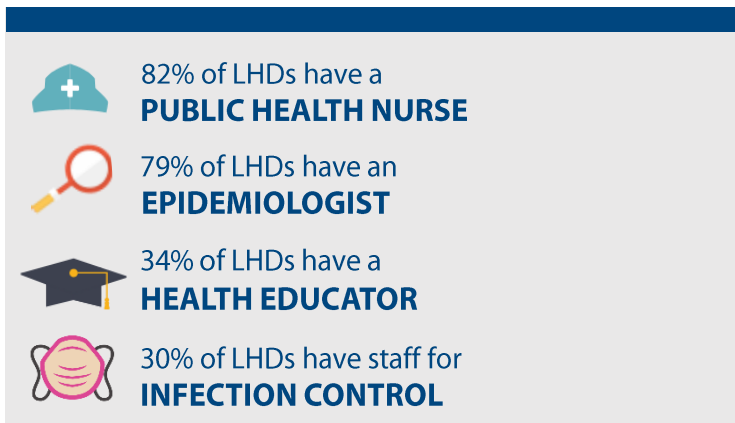
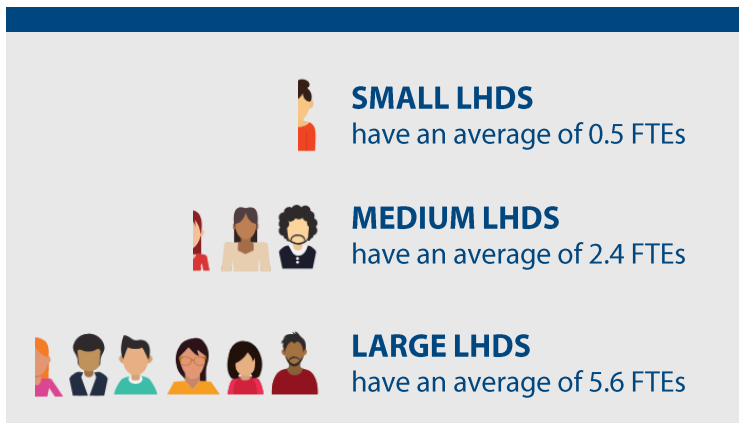
## ROLE IN OUTBREAK & EXPOSURE EVENTS IN THE PREVIOUS YEAR

90% of LHDs report playing some role in an outbreak or exposure event in the previous year, and 27% have been involved in a response to novel or emerging multi-drug resistant organisms.



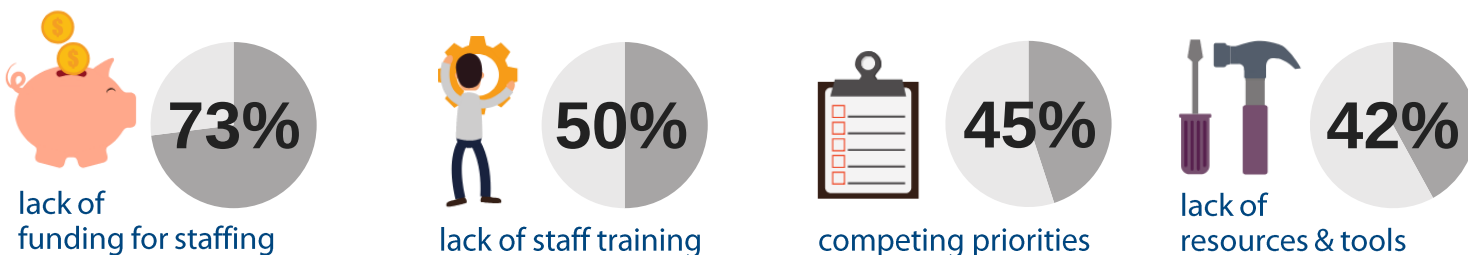
## HAI/AR WORKFORCE

The number of FTEs involved in HAI/AR activities varies based on the population size served by an LHD, and most HAI/AR work is conducted by a nurse or epidemiologist on staff.



## BARRIERS TO INVOLVEMENT IN HAI/AR PREVENTION & CONTROL

LHDs experience barriers to conducting HAI/AR activities that most often relate to insufficient workforce capacity.



### LHDs play a vital role in HAI/AR prevention & control.

Ongoing support and resources are critical to support LHD staff capacity, expand partner engagement, strengthen LHD infrastructure, and prioritize HAI/AR activities. Understanding and cultivating the expanding role that LHDs play is necessary to advance HAI/AR prevention and control.