

NACCHO MAPPING

NACCHO GIS utilizes Geographical Information Systems (GIS) and geostatistical tools in planning and analyzing data. GIS makes it easier for health departments to make critical decisions, tell the story of their community, and streamline resources to minimize costs. Recognizing the value GIS poses to its membership, NACCHO has dedicated experts on staff to create data-rich, visual analyses in innumerable applications.

NACCHO's GIS technology department includes catastrophic response and public health experts and GIS professionals. NACCHO GIS works closely with members and partners to create data visualizations which assist in making crucial decisions, along with analyzing correlations and patterns, and providing GIS education and technical support.

If your health department is interested in improving its GIS analysis capabilities or creating specific mapping products, NACCHO may be able to help in a collaborative service. **Contact GIS@naccho.org.**

GIS Services:

- Data development
- Geocoding
- Aggregation
- Report development
- Data management
- Data sharing
- Technical support

A Solution For:

- Decision making
- Problem solving
- Visualizing
- Analyzing
- Communicating
- Project planning
- Spatial modeling

EDUCATE

NACCHO is dedicated to educating members and partners about the benefits of GIS in identifying patterns and solutions for the health community. NACCHO also offers members GIS technical training and support.

DEVELOP

As a data clearing house, NACCHO is committed to developing and converting data into a usable GIS format. Members and partners will have access to NACCHO's GIS data through its dedicated GIS website.

MANAGE DATA

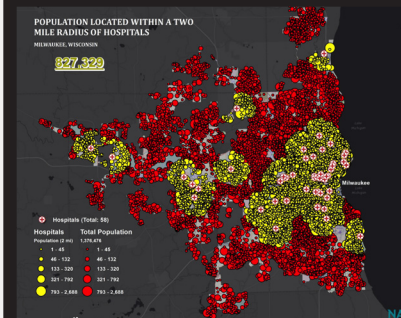
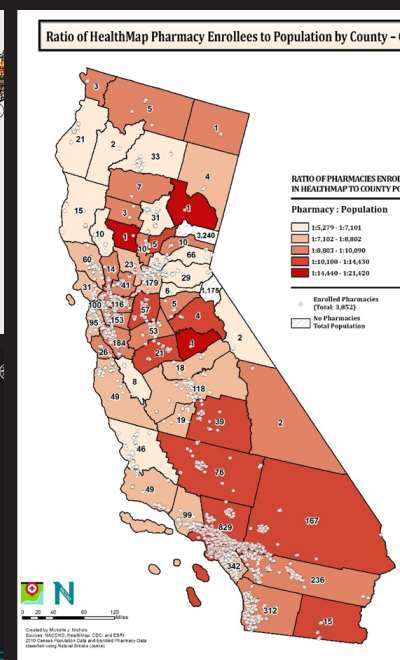
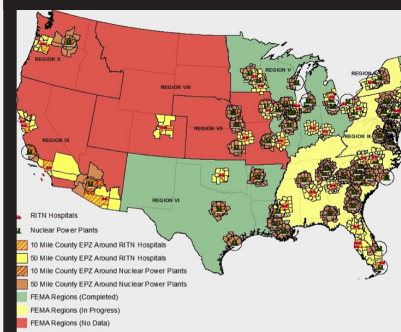
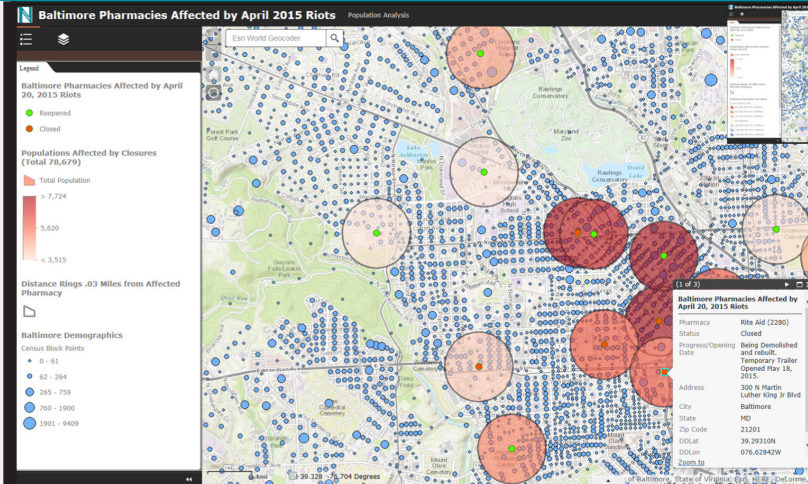
NACCHO data management enables central storing of quality and usable data. NACCHO's dedicated GIS staff continually audit usable inventories and provides data resources to help prevent data duplication, saving members and partners valuable time and money.

SHARE

Sharing GIS data strengthens decisions made within our community by making open source GIS data accessible. NACCHO GIS clearinghouse provides the technical support and experience to quickly and efficiently share data when needed.

ANALYZE

With access to NACCHO's GIS clearinghouse, members and partners analyze valuable information resulting in useful and viewable output. Members and partners have access to numerous attributes including demographics, populations, locations, etc.



NACCHO GIS Preparedness StoryMap

NACCHO GIS AND DISASTER PREVENTION

There are over 70 RTN centers across the country. These hospitals and clinics are well-versed in the treatment of marrow toxicity casualties and have the capacity to treat a surge population of potentially contaminated individuals.

This RTN Story Map demonstrates the power of utilizing preparedness.