

Partnering with the Experts - How to Connect with Certified Infection Preventionists



Objectives



1. Discuss how to engage local IPC networks to support and build trust with long-term care facilities.
2. Review successes and lessons learned from multiple LHD IPC consultant partnership train-the-trainer projects.
3. Understand available LTC IPC resources for future support of IPC programs for the LTC community.



Your IPC Network

Near, Far, Wherever They Are!

Building Your IP Network

You Are Not Alone!

National Network

- Government IPC friends:
 - CDC, CMS
- NACCHO
 - Virtual Communities
 - Toolbox
 - Workgroups
- SHEA (Society for Healthcare Epidemiology of America)
- APIC (Association for Professionals in Infection Control and Epidemiology)
 - Infection Prevention and You

Local Network

- Local APIC Chapters
 - www.apic.org/chapters
- Local Hospital IPs
 - LHD participation in hospital Infection Control Committee meetings
- IP Consulting Firms
 - Outsource grant funding/projects to the experts!

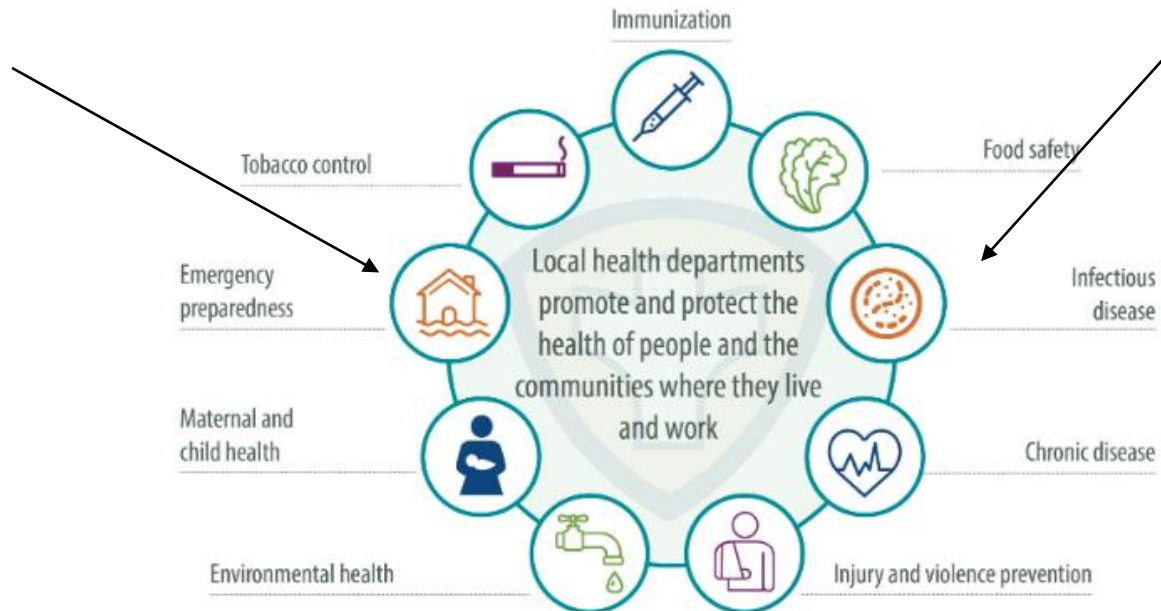


Partnership Successes

NACCHO!

Not Your Average Association

Local health departments impact our lives every day



NACCHO!

Not Your Average Association

IPC-AT Infection Prevention and Control Assess and Train

- Trained 35 LHDs via CDC/NACCHO funded project, deploying over 22 local(ish) consultants.
- APIC Consulting tapped local and regional networks to deliver train-the-trainer education.
 - Project included a customized toolkit which included email [templates and resources](#).
- Access to customized ICAR (Infection Control Assess and Response) education and training to better equip LHDs to perform IPC assessments at LTCFs, including a tele-ICAR.

NACCHO

IPC Toolkit

- Developed by IPC SMEs who supported LHDs on the **IPC- AT project**
- Estimated publish date **July 2024**
- **23 chapters** of curated IPC tools and for LHDs
 - Including checklists, PPT decks to use as training tools, and more.



Mock TeleICAR Interactive Tool

- Interactive course to train LHDs to utilize the new **CDC ICAR tool/modules**
- CDC/NACCHO collaboration
- Estimated publish date TBD
- Stay tuned to NACCHO communications and the **Education and Training Library!**

NACCHO

MDRO Toolkit

- Create resources on 4 MDROs: **CRE, CP-CRE, C. *Auris*, CRAB**
- **MDRO Decision Trees** on next steps
- 6-part webinar series, testing/screening, org reviews, transmission, etc.
- **MDRO Fact Sheets** org overview, most affected patient populations, prevention & treatment

NACCHO HAI Technical Assistance BUILD HAI/AR

- Provide technical assistance for BUILD HAI/AR **demonstration sites**
- Strengthen capacity for HAI prevention and response,
- Support LHD engagement in AR-related initiatives
- **Webinars, CoP calls, Resource Repository, communication products**
- Build strategic approaches to HAI/AR with focus on addressing **health equity**

NYSACHO

IPC Consultant utilized to develop and deliver training.

Partnership to deliver CDC Project Firstline training and education for NY-LHDs

- Tailored education based on learning needs assessment
- Trainings included two regional in-person courses and 4 regional virtual courses.
 - Virtual courses recorded to ensure global access
- **Topics included: Intro to IPC, PPE, COVID-19, Introduction to Reservoirs, Environmental Cleaning, Source Control, and Virus Strains**

State and City DOH Collaborations

Building Trust in LTCFs

Enhanced Infection Control Support

- Placed certified IP consultant in LTCF for 2-4 weeks
- Emphasized non-regulatory and non-punitive
- Placement included:
 - Personalized Assessment and Tracking Tool
 - Audits and Observations
 - Education
 - Weekly summary reports of findings, resources, sustainability

IPC Capacity Building and Technical Support

- Placed certified IP consultants in SNFs to conduct a comprehensive IPC program assessment
- After assessment, delivered a customized and trackable action plan to monitor and mitigate identified IPC gaps and areas of improvement
- Timeline with each facility between 3-6 months



Questions?

Kathryn Hitchcock, MBA
APIC Consulting Services
VP, Business Development
khitchcock@apic.org

Carrie Harter, MPH, CIC
APIC Consulting Services
Project Manager
charter@apic.org

