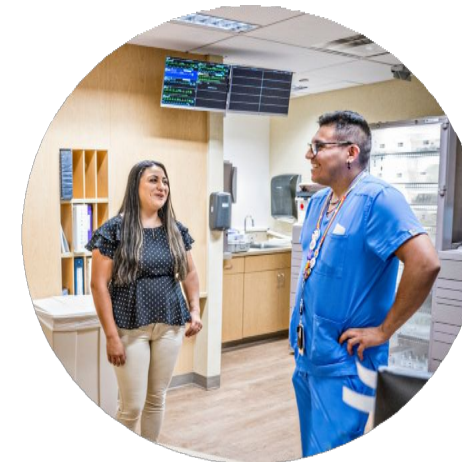


Welcome to Day 2!

NACCHO Healthcare Infection Prevention and Control Summit: Equip, Collaborate, and Innovate for Success



Disclosure

Project Firstline is a national collaborative led by the U.S. Centers for Disease Control and Prevention (CDC) to provide infection control training and education to frontline healthcare workers and public health personnel. National Association of County and City Health Officials (NACCHO) is proud to partner with Project Firstline to host the NACCHO Healthcare Infection Prevention and Control Summit (Summit), as supported through CDC Grant # 6NU380T000306-03-05. CDC is an agency within the Department of Health and Human Services (HHS). This presentation is being hosted as part of the Summit; the contents of this presentation and Summit do not necessarily represent the policies of CDC or HHS and should not be considered an endorsement by the Federal Government.

Exhibit Hall Hours Today

- Pre-Conference: 7:30am - 9:00am
- Lunch: 11:30am – 1:00pm
- Afternoon Exhibit Hall Spotlight Session: 4:00pm– 4:30pm

#NACCHOIPCSummit



Amy Kolwaite, PhD, ARNP, MPH

Chief

Health Systems Strengthening, Resilience & Training Branch
Division of Healthcare Quality Promotion
Centers for Disease Control and Prevention



Olusimbo Ige, MD, MS, MPH

Commissioner

Chicago Department of Public Health

Thriving, Not Just Surviving

May 8, 2024

Dr. Olusimbo Ige, MD, MS, MPH

Project Firstline is a national collaborative led by the U.S. Centers for Disease Control and Prevention (CDC) to provide infection control training and education to frontline healthcare workers and public health personnel. National Association of County and City Health Officials (NACCHO) is proud to partner with Project Firstline to host the NACCHO Healthcare Infection Prevention and Control Summit (Summit), as supported through CDC Grant # 6NU380T000306-03-05. CDC is an agency within the Department of Health and Human Services (HHS). This presentation is being hosted as part of the Summit; the contents of this presentation and Summit do not necessarily represent the policies of CDC or HHS and should not be considered an endorsement by the Federal Government.

★ Current Public Health Challenges



FUNDING CLIFF



POLITICAL CLIMATE



**PUBLIC HEALTH
PROFESSIONAL BURNOUT**



**PERVASIVE HEALTH
INEQUITIES**



★ What is Public Health



Prevent



Protect



Promote



Navigating Public Health

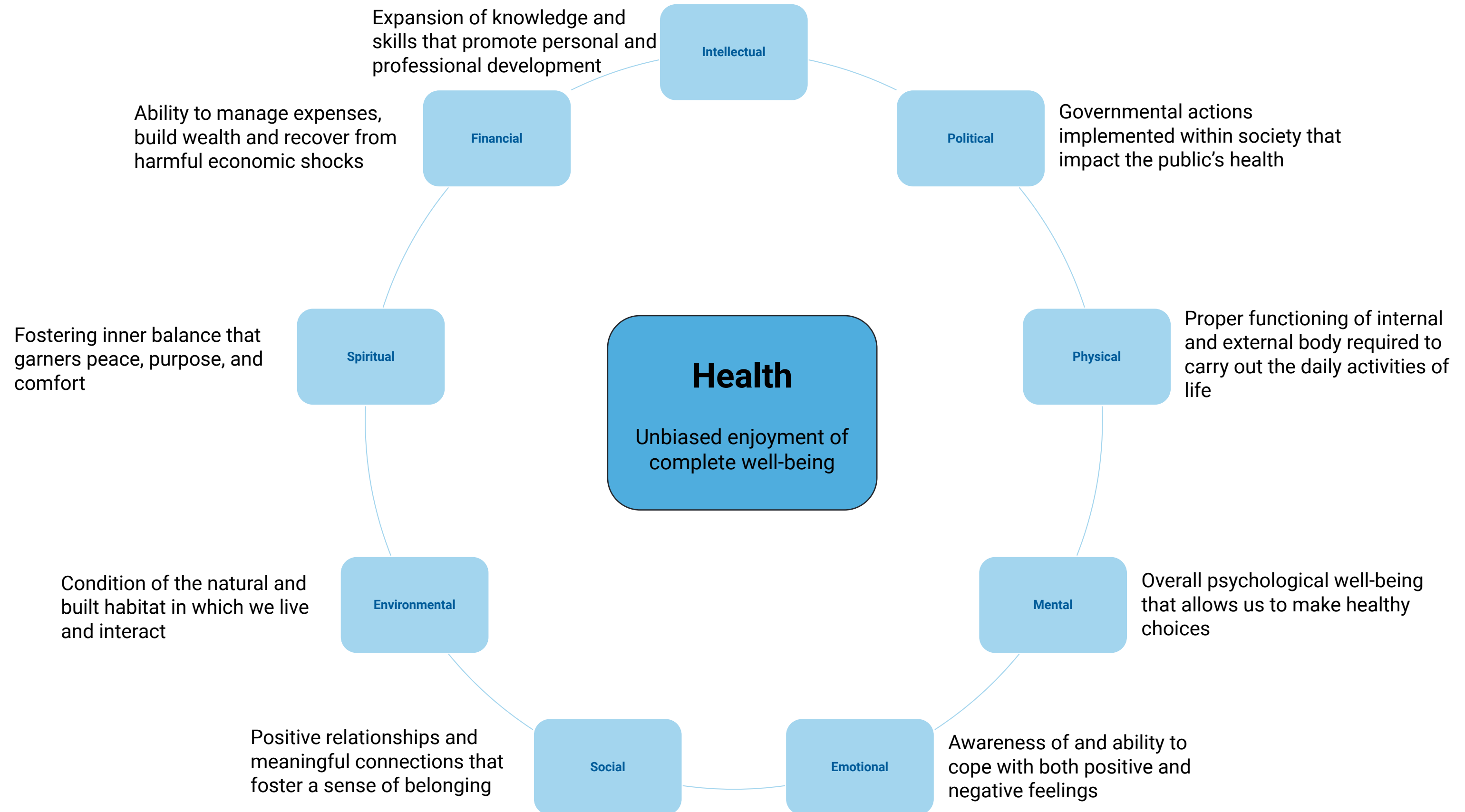
Adaptive leadership

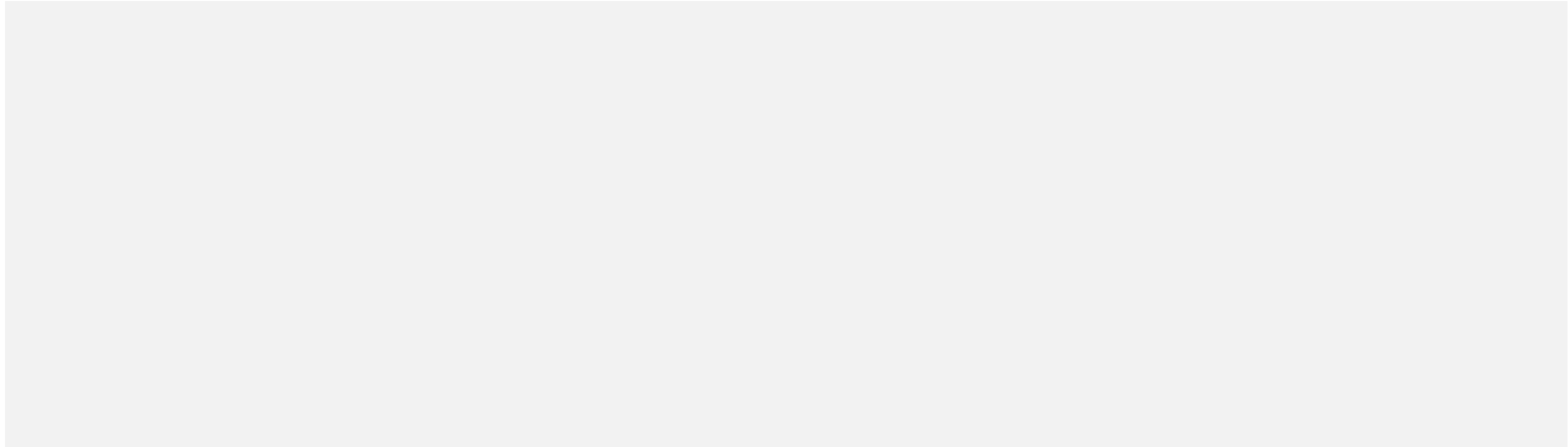
- Preventing the preventable
- Creative solutions to complex problems
- Navigating the rapidly changing political climate
- Responding to the concerns of the population

Stakeholder Engagement

- Breaking down silos
- Consistent strategic collaboration
- Public-private partnerships
- Increasing transparency

The Public Health Approach to Wellness





Chicago.gov/Health



HealthyChicago@cityofchicago.org



[@ChicagoPublicHealth](https://www.facebook.com/ChicagoPublicHealth)



[@ChiPublicHealth](https://twitter.com/ChiPublicHealth)