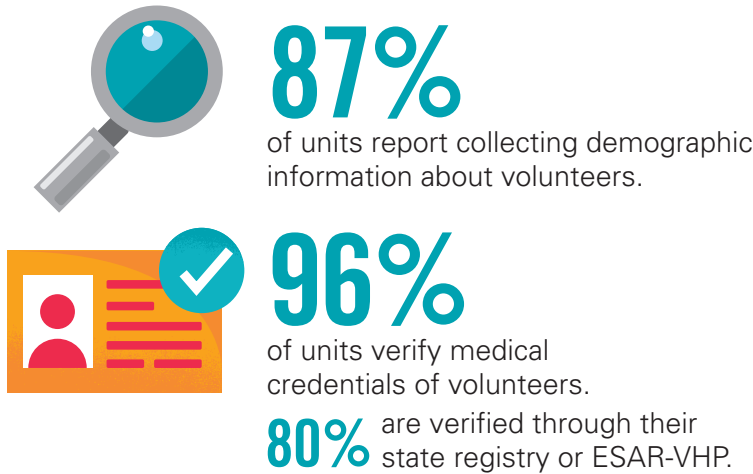


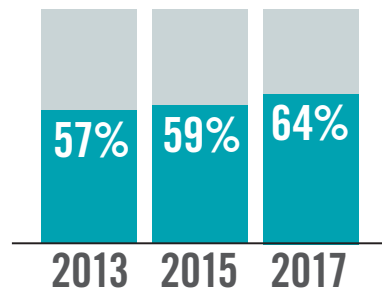
# INFOGRAPHIC

## MRC CAPABILITIES SNAPSHOT

### BACKGROUND CHECKS

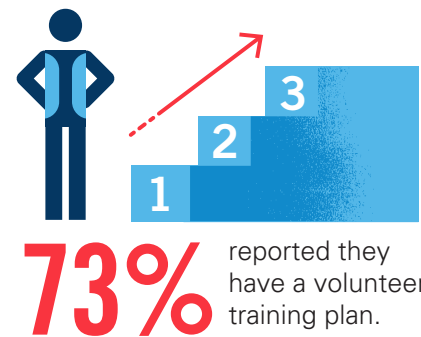


MRC units that conduct background check screening of volunteers increased from 2013 to 2017.

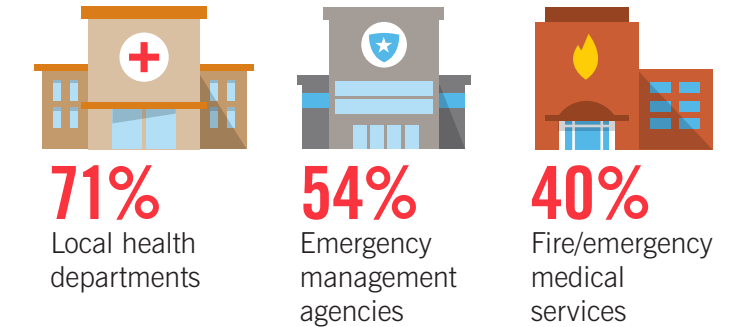


**We simply could not do large-scale activities without MRC.**  
—Local Health Department (Stakeholder) Survey respondent

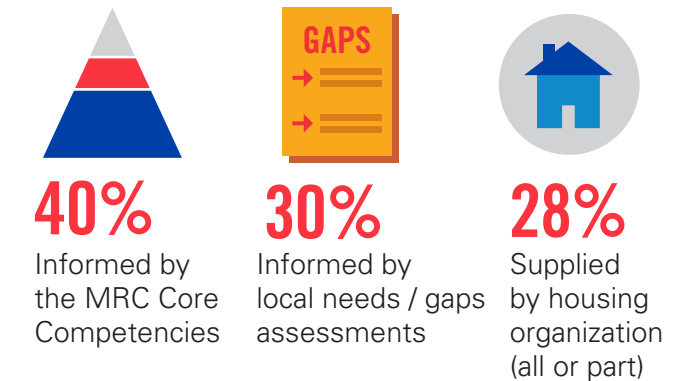
### TRAINING



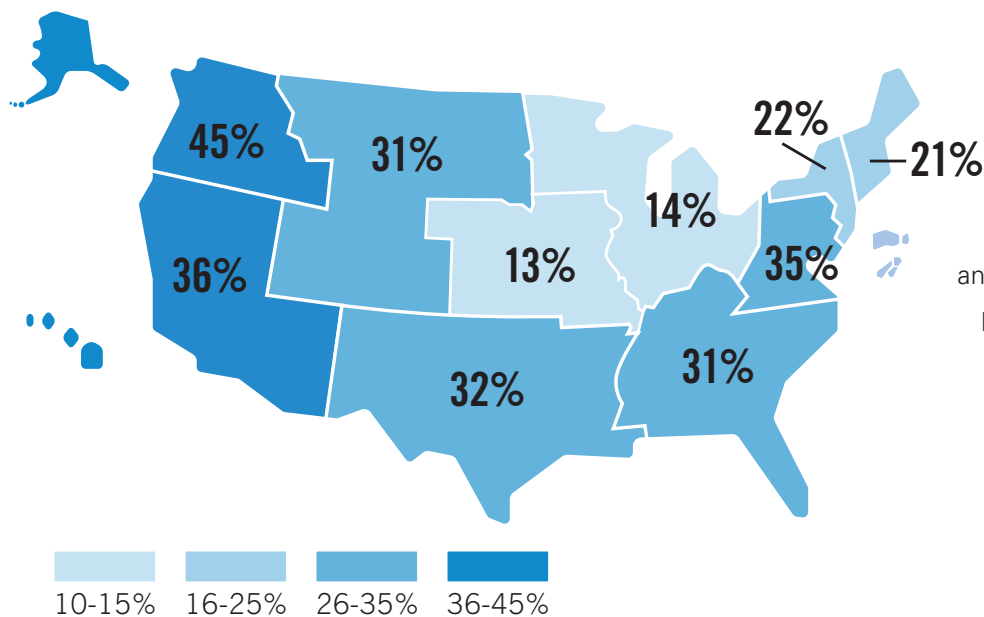
### TOP THREE TRAINING PARTNERS:



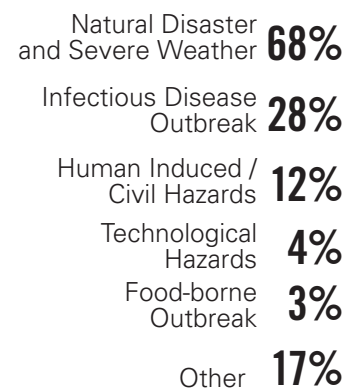
### TOP THREE TRAINING DEVELOPMENT METHODS:



### RESPONSE TO EMERGENCIES BY HHS REGION:



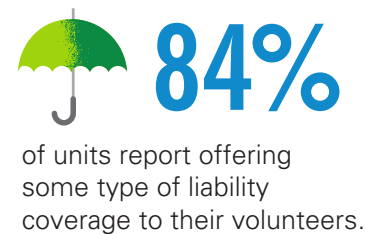
### TYPES of EMERGENCIES:



### MISSION READY



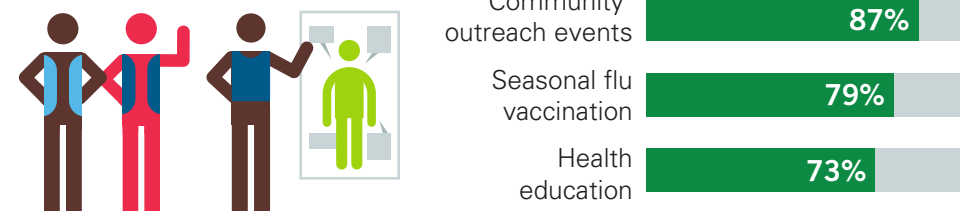
### LIABILITY



### TOP UNIT CAPABILITIES

Activities in which MRC units have or could have participated:

#### PUBLIC HEALTH



#### EMERGENCY PREPAREDNESS

