

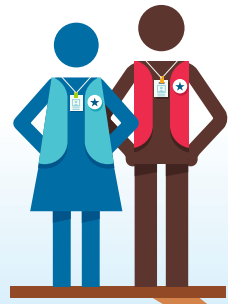
# THE 2017 MRC UNIT SNAPSHOT

## INFOGRAPHIC

### NATIONALLY

**68%**

of units are housed in Local Health Departments.



**74%**

of units have been with their housing organizations for five or more years.



**89%**

of units are integrated into their housing organization's emergency plan.



**79%**

of unit leaders have a Bachelor's degree or higher education.

**37%**

of unit leaders have advanced degrees (Master's or higher).

**55%**

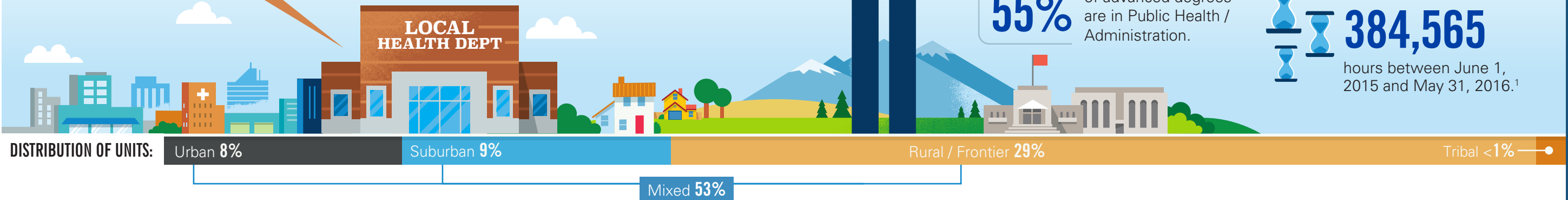
of advanced degrees are in Public Health / Administration.



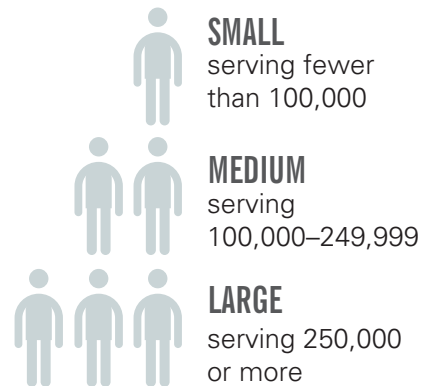
On average, MRC unit leaders devote **10.2** hours per week to MRC activities.



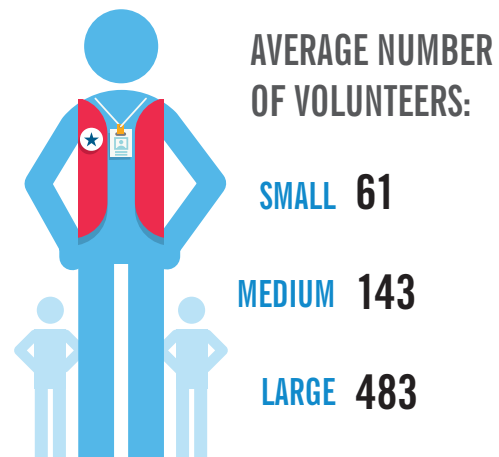
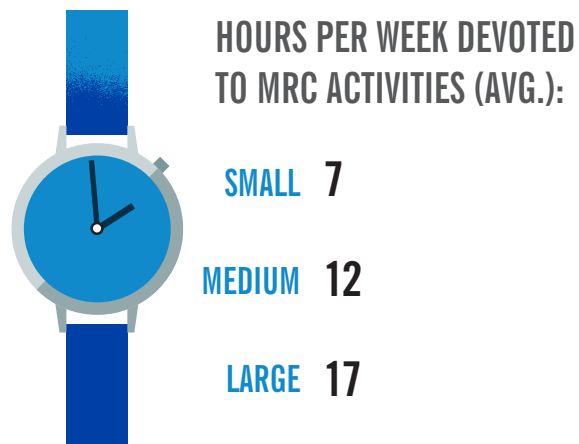
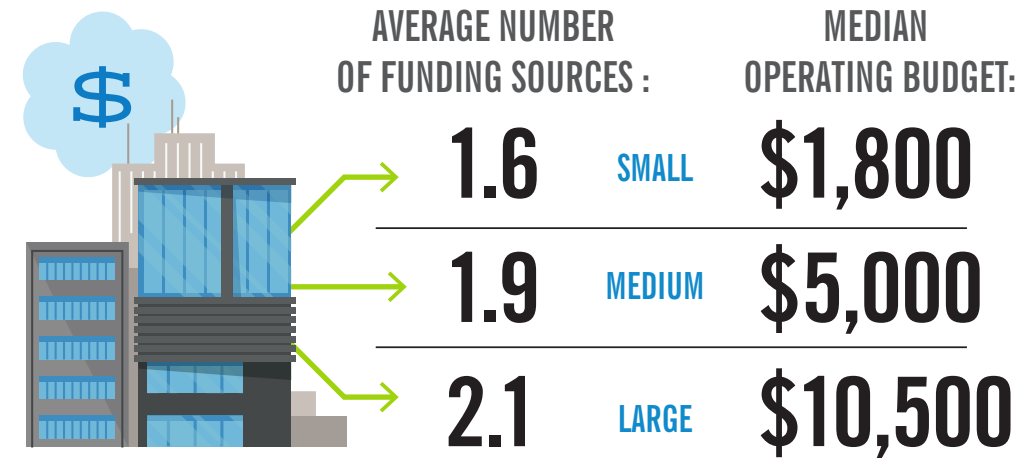
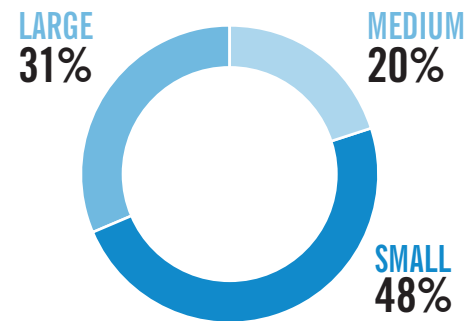
In total, MRC units reported contributing a cumulative **384,565** hours between June 1, 2015 and May 31, 2016.<sup>1</sup>



### COMMUNITIES SERVED BY MRC UNITS:



### PERCENTAGE OF MRC NETWORK:



### RESPONDED TO AN EMERGENCY DURING THE PAST YEAR:

