

Keep Communities Healthy by Investing in the Public Health Workforce

The public health workforce is the backbone of our nation's governmental public health system at the county, city, and state levels. Skilled professionals are the primary resource necessary to deliver public health programs and services: they lead efforts to ensure the safety of the air we breathe, the food we eat, and the water we drink. They prepare and respond to disasters like hurricanes, floods, wildfires, and COVID-19.

However, governmental public health was hit hard by the Great Recession, and whereas much of the rest of the public sector workforce has recovered or grown, local and state health departments have not. In fact, **local and state health departments have lost more than 20% of their workforce since 2008**, shedding over 50,000 jobs across the country.

This deficiency is compounded by the age of the public health workforce — 55% of local public health professionals are over age 45, and **almost a quarter of health department staff are eligible for retirement**. Between those who plan to retire or pursue jobs in the private sector, projections suggest that **nearly half of the local and state health department workforce might leave in coming years**. At the same time, competition with the private sector, low pay, and geographic challenges contribute to difficulty recruiting new talent with key public health skills. Combined, these forces indicate a public health workforce crisis that must be addressed.

Local, State, Tribal and Territorial Health Departments



The nation is positioned to make incredible progress in addressing long-standing public health problems, but **health departments need the people to make a difference**. And, as the healthcare system has moved rapidly into an electronic data environment, many public health professionals are not equipped with the technology or the skills to engage with these data systems. Public health is dependent on data to identify trends and target resources where they will have the greatest impact. Federal and state governments have invested heavily in healthcare systems that are able to share data, but these investments will not reach their full potential without public health professionals who can harness their potential to improve their communities.

Congress Can Help

COVID-19 has demonstrated the danger of not having the right people in place to respond to an emergency. New staff are joining health departments to help protect the public during this pandemic. The public health system needs to retain these staff long term and help ensure that their experience is harnessed and available to address current as well as future public health emergencies.

Therefore, the Public Health Workforce Coalition calls on Congress to take a first step to invest in the public health workforce, by enacting and implementing a loan repayment program for public health professionals who agree to serve three years in a local, state, or tribal health department.

Such a program, modeled off the success of the National Health Service Corps in bringing healthcare providers to communities in need, will help health departments across the country recruit appropriate staff who can tackle 21st century challenges and increase health departments' capacity, now and in the future, to keep the public healthy and safe.

While the public health workforce has been cut, serious public health challenges are on the rise:

- COVID-19 is the deadliest public health emergency in a century; public health professionals are fighting to turn the tide by vaccinating the public against the disease.
- The deadliest flu season in a generation occurred in 2017–2018 with 80,000 deaths.
- 2019 saw 1,276 individual cases of measles in 31 states, the most since 1992.
- Syphilis and other STIs are skyrocketing with a 185% increase in congenital syphilis since 2014.
- Vaping among high schoolers has ballooned from 1.5% in 2011 to 27.5% in 2019, reversing the gains made in reducing youth smoking.

Supporting Organizations

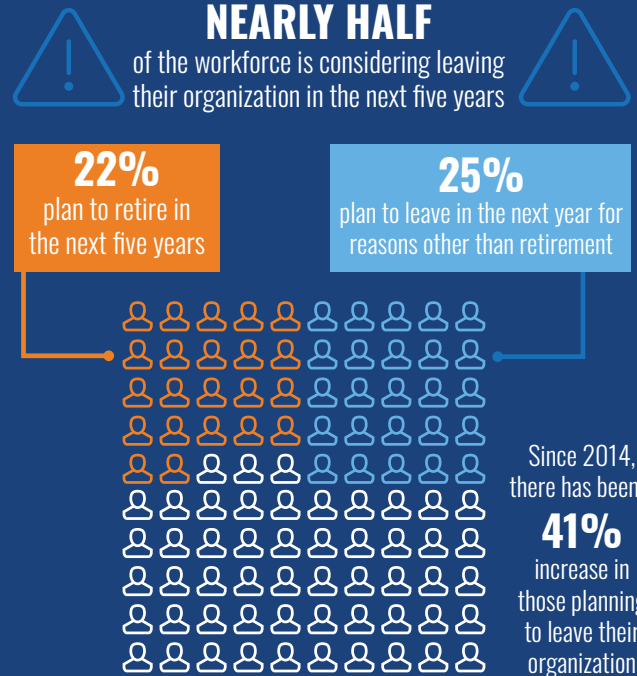
3RNet - National Rural Recruitment & Retention Network
 AFSCME
 Allergy & Asthma Network
 Alliance for Aging Research
 Alliance of Nurses for Healthy Environments
 American Association for Clinical Chemistry
 American Association of Colleges of Pharmacy
 American Association of Colleges of Podiatric Medicine
 American Association on Health and Disability
 American College of Clinical Pharmacy
 American College of Preventive Medicine
 American Dental Education Association
 American Geriatrics Society
 American Lung Association



Is the workforce sustainable?

TURNOVER:

Health departments face a high rate of turnover. Nearly half of the workforce is considering leaving their organization in the next five years.



Source: Public Health Workforce Interests and Needs Survey, 2017

American Organization for Nursing Leadership
 American Osteopathic Association
 American Podiatric Medical Association
 American Psychological Association
 American Public Health Association
 American Society of Tropical Medicine & Hygiene
 Association for Prevention Teaching and Research
 Association for Professionals in Infection Control and Epidemiology
 Association of Community Health Nursing Educators
 Association of Maternal & Child Health Programs
 Association of Nurses in AIDS Care
 Association of Public Health Laboratories
 Association of Public Health Nurses
 Association of Schools Advancing Health Professions

Association of Schools and Programs of Public Health
Association of State and Territorial Health Officials
Association of Women's Health, Obstetric and Neonatal Nurses
Big Cities Health Coalition
CAEAR Coalition
Coaliton of National Health Education Organizations
Council of State and Territorial Epidemiologists
Council of Public Health Nursing Organizations
de Beaumont Foundation
Eta Sigma Gamma
Families USA
GLMA: Health Professionals Advancing LGBTQ Equality
HIV Medicine Association
Immunization Action Coalition
Impetus - Let's Get Started LLC
Infectious Diseases Society of America
International Certification & Reciprocity Consortium
Lakeshore Foundation
NAADAC, the Association for Addiction Professionals
NASTAD
National Association for Public Health Statistics and Information Systems
National Association of County and City Health Officials
National Association of Local Boards of Health
National Association of Nurse Practitioners in Women's Health
National Association of State and Territorial AIDS Directors
National Association of State Emergency Medical Services Officials

National Black Nurses Association
National Board for Certified Counselors
National Coalition of STD Directors
National Consumers League
National Environmental Health Association
National Family Planning & Reproductive Health Association
National Forum for Heart Disease & Stroke Prevention
National Health Care for the Homeless Council
National Hispanic Medical Association
National Network of Public Health Institutes
National WIC Association
Northwest Center for Public Health Practice
Prevent Blindness
Prevention Institute
Public Health Activities and Services Tracking project, University of Washington School of Nursing
Public Health Foundation
Rural Nurses Association
Safe States Alliance
San Francisco AIDS Foundation
School-Based Health Alliance
Society for Public Health Education
The AIDS Institute
The Gerontological Society of America
Trust for America's Health
University of Washington School of Nursing
University of Washington School of Public Health
Vaccinate Your Family

For more information and to join the Coalition, please contact:

Adriane Casalotti, MPH, MSW
Chief, Government and Public Affairs
National Association of County and City
Health Officials (NACCHO)
acasalotti@naccho.org

Data Sources:

1. Robin N, Castrucci BC, McGinty M, Edmiston A, Bogaert K. Local Public Health Workforce Interests and Needs in 2017: A Nationally Representative Benchmark of the Local Governmental Public Health Workforce. JPHMP. 2019; 25:S16-S25.
2. Leider JP, Coronado F, Beck AJ, Harper E. Reconciling Supply and Demand for State and Local Public Health Staff in an Era of Retiring Baby Boomers. Am J Prev Med. 2018;54(3):334-340.
3. 2019 National Profile of Local Health Departments
4. ASTHO Profile of State and Territorial Public Health, Volume 4.

NACCHO

National Association of County & City Health Officials

The National Connection for Local Public Health



Public Health
Prevent. Promote. Protect.

The mission of the National Association of County and City Health Officials (NACCHO) is to improve the health of communities by strengthening and advocating for local health departments.

1201 Eye Street, NW, Fourth Floor • Washington, DC 20005

Phone: 202.783.5550 • Fax: 202.783.1583

© 2021. National Association of County and City Health Officials