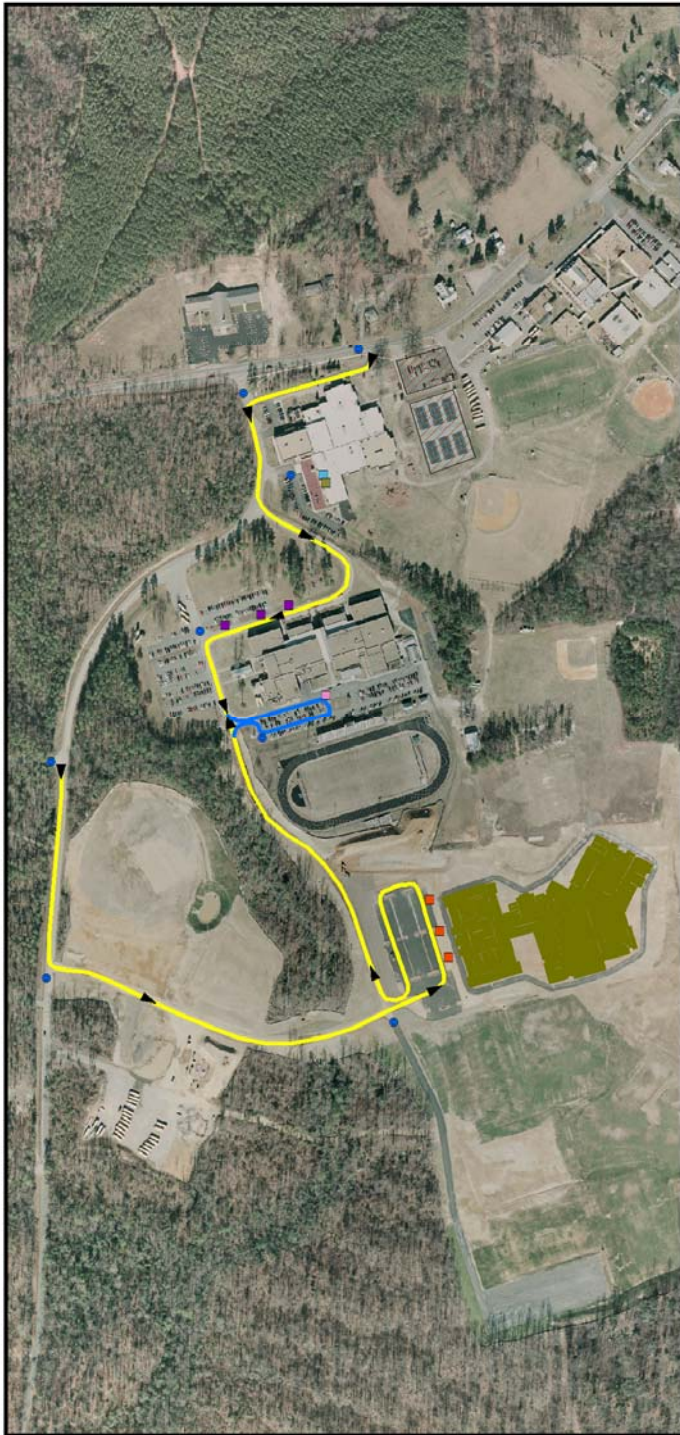




## Toolkit

Thank you for downloading this tool. The tools, templates and resources provided in this online toolkit are compiled and curated by NACCHO primarily to assist those local health departments applying to Project Public Health Ready (PPHR), a criteria-based all-hazards preparedness training and recognition program for local health departments. Many of these tools were collected from the plans of previous PPHR applicants. All of the resources in this toolkit were vetted and approved as exemplary practices by a workgroup of local public health preparedness experts.

We hope you find these resources useful and engaging. For more information about Project Public Health Ready or to provide feedback on any of these tools, please contact us at [pphr@naccho.org](mailto:pphr@naccho.org).



# New Kent High School Dispensing Site

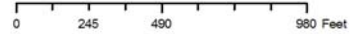
## Stations

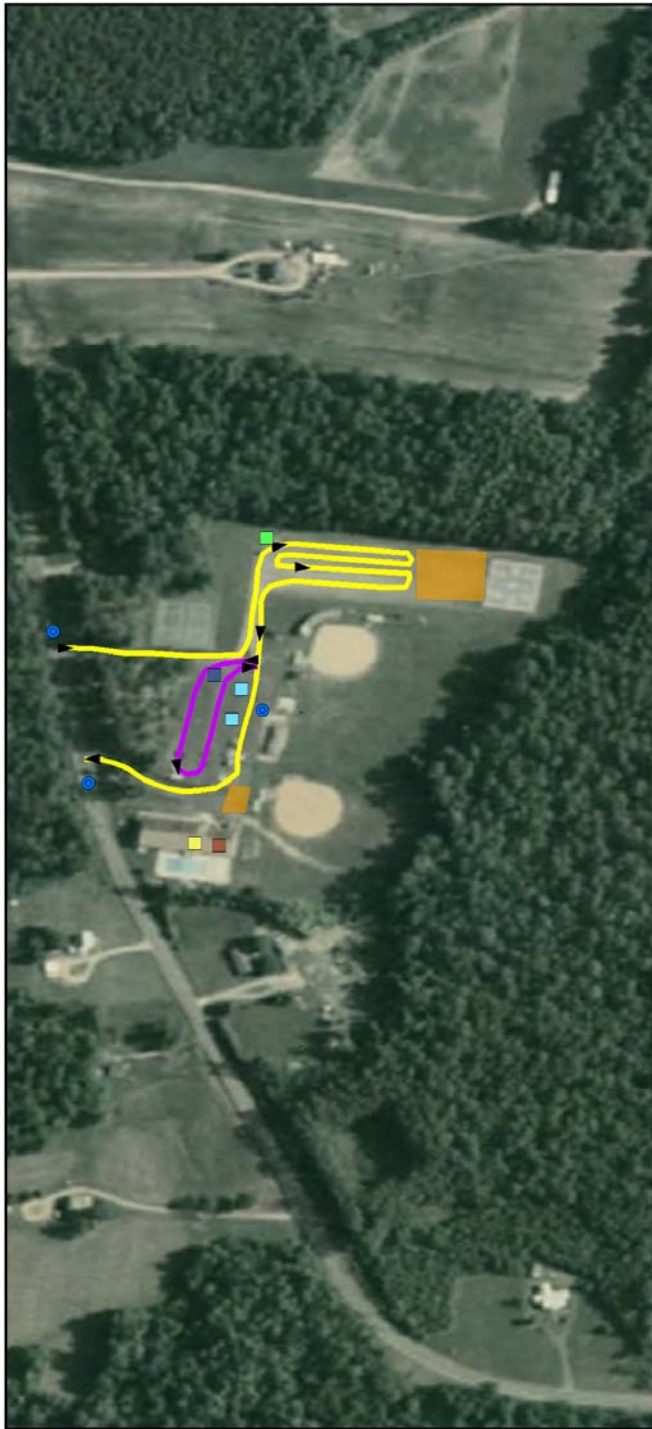
- Dispensing 1
- Dispensing 2
- Dispensing 3
- Incident Command Post
- JIC
- Medical Consult
- Registration 1
- Registration 2
- Registration 3
- Security

## Traffic Flow

- ▶▶▶▶▶ Main
- Medical Consult
- New Kent High School
- ▨ Staging Area

Projection: Lamber Conformal Conic  
 Unit: Feet  
 Datum: NAD 1983  
 Source:  
 Chickahominy Health District  
 Hanover County GIS Department  
 Prepared by:  
 Chickahominy Health District





# Charles City Social Center Dispensing Site

## Stations

- Dispensing 1
- Dispensing 2
- Incident Command Post
- JIC/PIO
- Medical Consult
- Registration
- Security

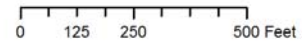
## Clinic Flow

- ←→ Main
- ←→ Medical
- Staging Area

Projection: Lamber Conformal Conic  
 Unit: Feet  
 Datum: NAD 1983

Source:  
 Chickahominy Health District  
 Hanover County GIS Department

Prepared by:  
 Chickahominy Health District





# Goochland High School Dispensing Site



**Stations**

- Dispensing Station 1
- Dispensing Station 2
- Incident Command Post
- JIC
- Medical Consult
- Registration
- Security Post

**Clinic Flow**

- ▶▶▶▶▶ Main
- ▶▶▶▶▶ Medical Consult
- Staff Parking
- Staging Area

Projection: Lamber Conformal Conic  
 Unit: Feet  
 Datum: NAD 1983  
 Source:  
 Chickahominy Health District  
 Hanover County GIS Department  
 Prepared by:  
 Chickahominy Health District

