



Department of Health & Human Services
Office of the National Coordinator for
Health Information Technology

HEALTH INFORMATION TECHNOLOGY
AND SERVICES ADMINISTRATION

Public Health and the National HIT Agenda

John W. Loonsk, MD

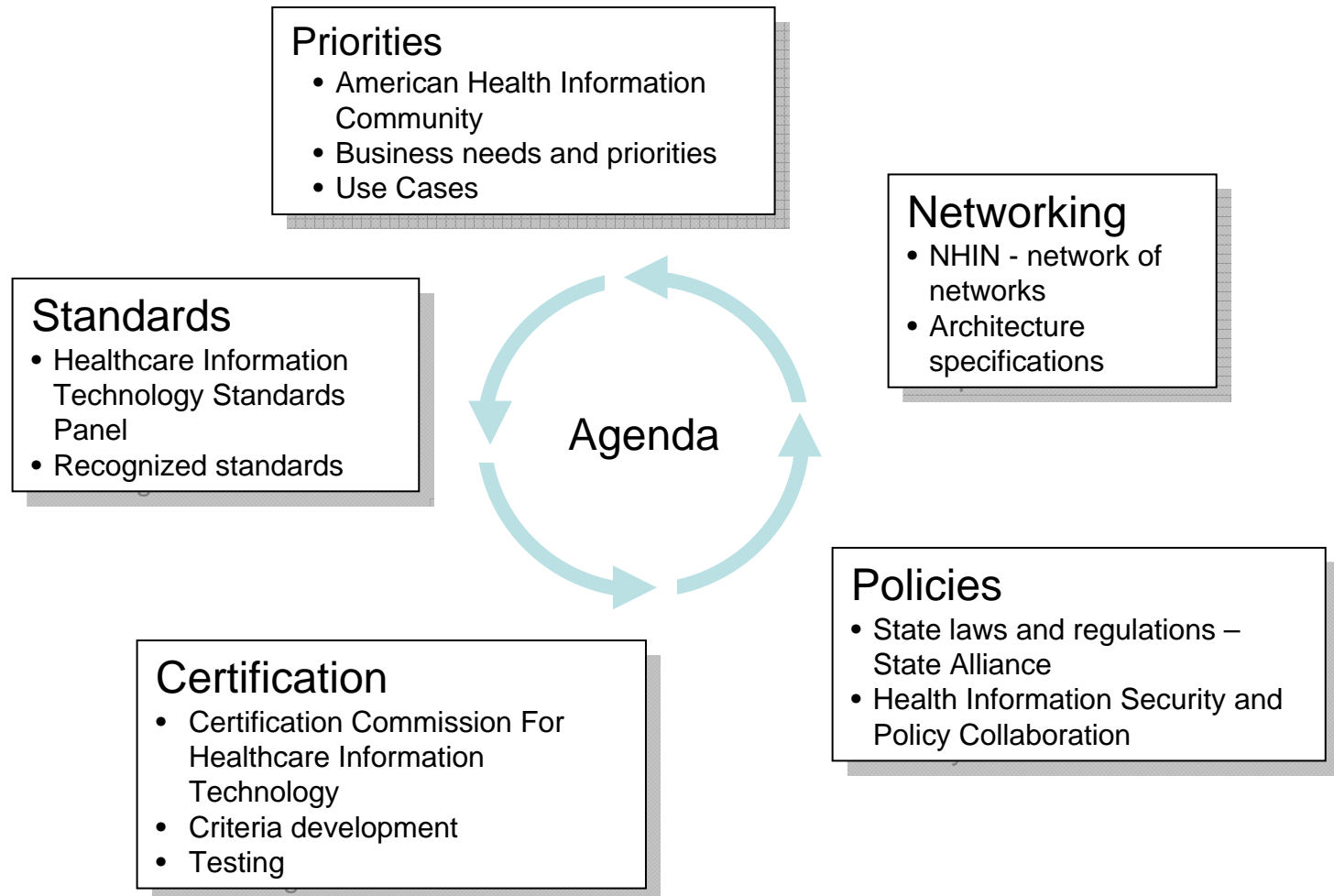
***Office of the National Coordinator
for Health Information Technology***



Some Critical Health Needs and National HIT Agenda

- **Avoidance of medical errors**
 - Up to 98,000 avoidable annual deaths due to medical errors
- **Improvement of resource utilization**
 - Up to \$300B spent annually on treatments with no health yield
- **Acceleration of knowledge diffusion**
 - 17 years for evidence to be integrated into practice
- **Reduction of variability in healthcare delivery and access**
 - Access to specialty care highly dependent on geography
- **Empowerment of the consumer**
 - Capitalize on growing consumer trend of active health management
- **Strengthening of data privacy and protection**
 - HIPAA becomes reality
- **Promotion of public health and preparedness**
 - Surveillance is fragmented, and importance to homeland security brings heightened awareness

National HIT Agenda and Health Information Exchange



AHIC Priorities and Use Case Roadmap

2006	2007 Use Cases		2008 Use Cases		2009 Use Case Work
Consumer Empowerment Use Case <ul style="list-style-type: none"> •Registration •Medication History 	Consumer Access to Clinical Information <ul style="list-style-type: none"> •Access to Clinical Data •Provider Permissions •PHR Transfer 		Remote Monitoring <ul style="list-style-type: none"> •Remote Monitoring of Vital Signs and Labs (Glucose) 	Patient – Provider Secure Messaging <ul style="list-style-type: none"> •Structured email •Reminders 	General Laboratory Orders
EHR Use Case <ul style="list-style-type: none"> •Laboratory Result Reporting 	Emergency Responder EHR <ul style="list-style-type: none"> •On-Site Care •Emergency Care •Definitive Care •Provider Authentication and Authorization 	Medication Management <ul style="list-style-type: none"> •Medication Reconciliation •Ambulatory Prescriptions •Contra-indications 	Consultations and Transfers of Care <ul style="list-style-type: none"> •Referrals •Problem Lists •Transfer of Care 	Personalized Healthcare <ul style="list-style-type: none"> •Laboratory Genetic / Genomic Data •Family Medical History 	Medication Gaps
Biosurveillance Use Case <ul style="list-style-type: none"> •Visit •Utilization •Clinical Data •Lab and Radiology 	Quality <ul style="list-style-type: none"> •Hospital Measurement and Reporting •Clinician Measurement and Reporting •Feedback to Clinicians 		Public Health Case Reporting <ul style="list-style-type: none"> •Case Reporting •Bidirectional Communication •Labs •Adverse Events 	Immunizations & Response Management <ul style="list-style-type: none"> •Resource Identification •Vaccine •EHR Data 	Common Device Connectivity
					Clinical Encounter Note Details
					Order Sets
					Consumer Preferences
					Common Data Transport
					Newborn Screening
					Medical Home: Co-Morbidity
					Medical Home: Registries
					Maternal and Child Health: Pediatric-focused
					Maternal and Child Health: Adult-focused
					Prior Auth & Sched for TPO: Prior Authorization
					Prior Auth & Sched for TPO: Scheduling
					Long Term Care Assessments
					Consumer AE Reporting

Priorities and Use Cases

General priorities challenges

- Entrenched interests, “scatter”
- Communication
- Public health and clinical care

Focus, test and advance exchange

Public health

- Biosurveillance
 - Minimum data set
- Emergency Response EHR
- Immunizations and response management
- Newborn Screening (coming)
- Public health case reporting
 - Reporting criteria, cases
 - Bi-directional communications
 - Medical errors

Standards and Public Health

INFORMATION SYSTEMS
PUBLIC HEALTH

- Recognized – 1/08
 - Biosurveillance minimum data set
 - ELR and clinical labs
 - Exchangeable forms
- Accepted – to be recognized 1/09
 - Summary record for emergency use
 - Case criteria and reports

Certification and Functionality

- EHR value spectrum
 - EHR “lite”
 - Connected EHR
 - Clinical decision support
- Public health?
 - Linking lab and epi data
 - Contact tracing
 - Detection support
 - etc